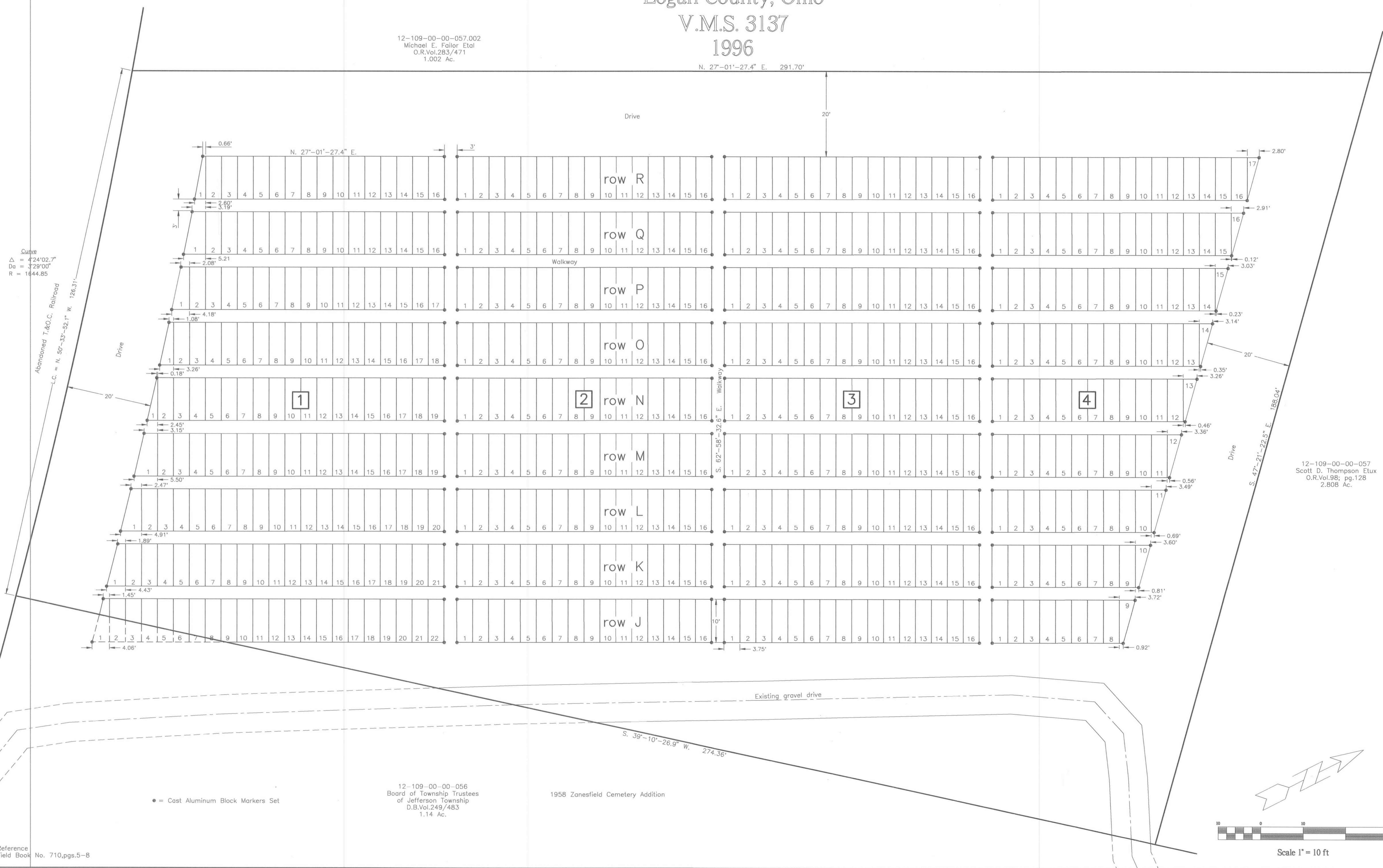


Addition to Zanesfield Cemetery
 Per. Parcel No.12-109-00-00-057.001
 Jefferson Township
 Logan County, Ohio
 V.M.S. 3137
 1996

12-109-00-00-057.002
 Michael E. Failor Etal
 O.R.Vol.283/471
 1.002 Ac.

N. 27°-01'-27.4" E. 291.70'



Curve
 $\Delta = 424'02.7"$
 $D = 329'00"$
 $R = 1644.85$

Abandoned T.&O.C. Railroad
 L.C. = N. 50°-33'-52.1" W. 126.31'

12-109-00-00-057
 Scott D. Thompson Etux
 O.R.Vol.98; pg.128
 2.808 Ac.

12-109-00-00-056
 Board of Township Trustees
 of Jefferson Township
 D.B.Vol.249/483
 1.14 Ac.

1958 Zanesfield Cemetery Addition

Reference
 Field Book No. 710, pgs.5-8