

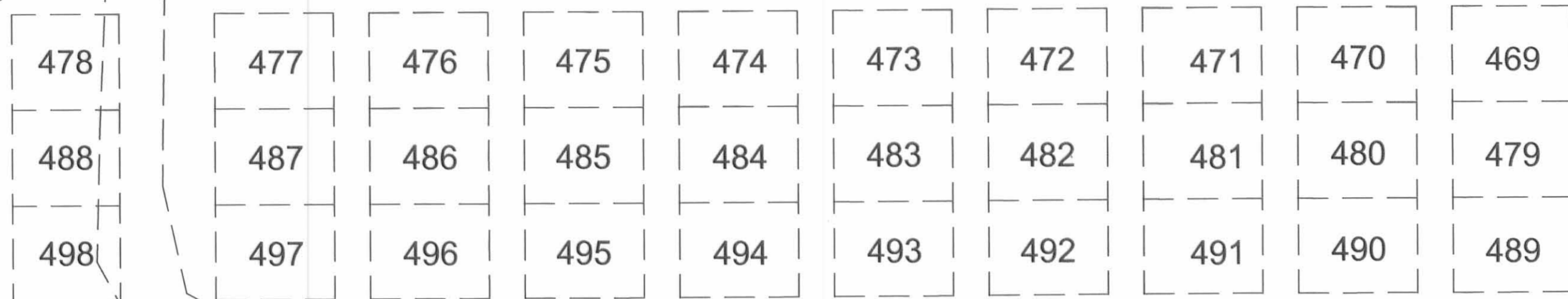
Fd. 5/8" Dia. capped re-bar  
Ref: 1990 Geeslin Survey  
Index No. R-1461

PROPERTY LINE

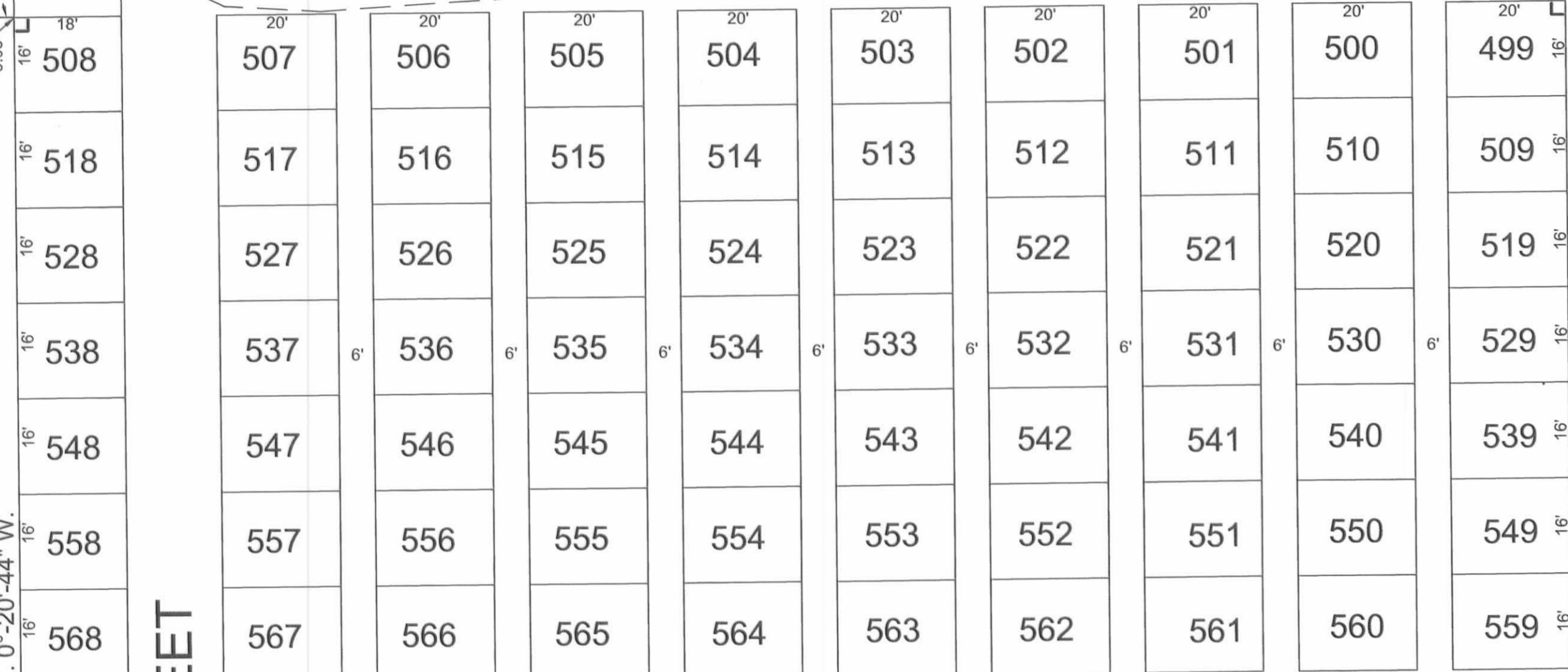


Village of DeGraff  
4.95 Acres  
D.B. Vol. 353, pg. 973  
35-117-06-01-004

PROPERTY LINE 1280.14'  
N. 0°-18'-50" W.  
PROPERTY LINE N. 0°-20'-44" W.

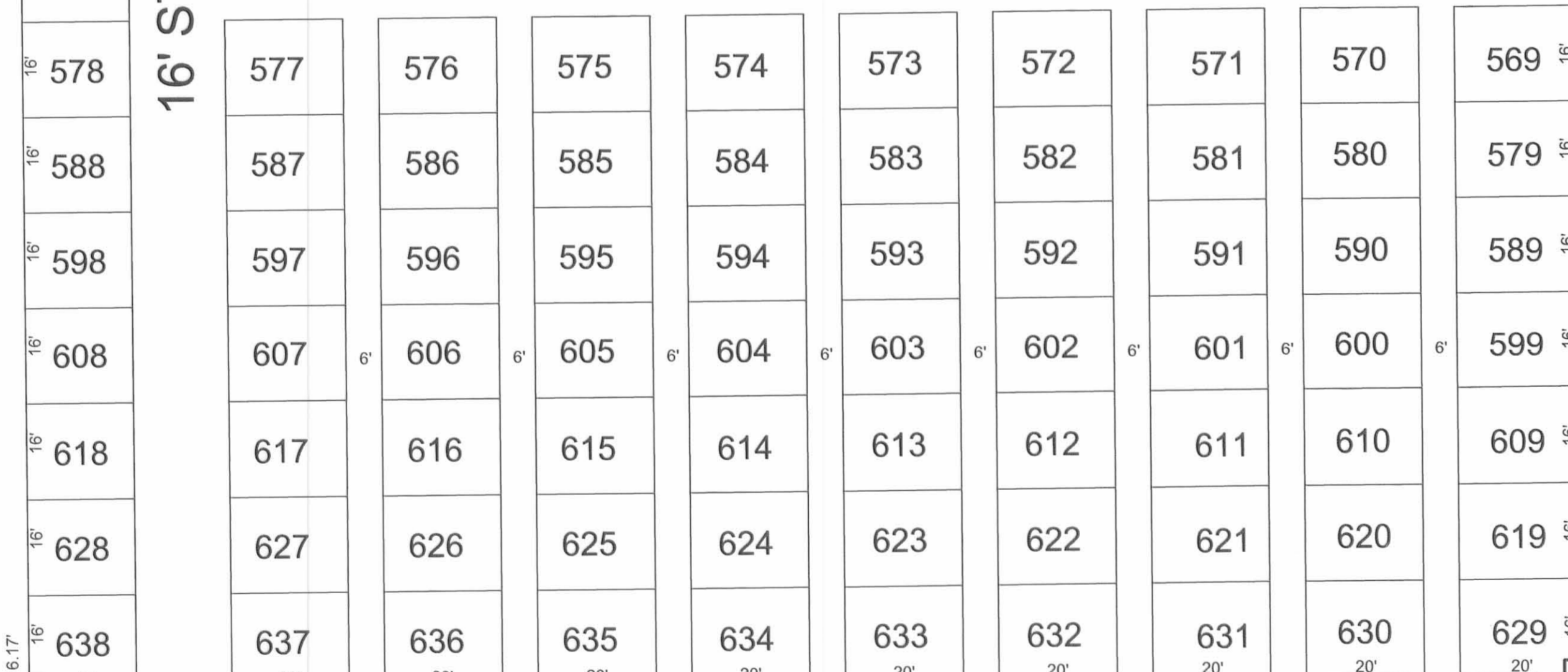


16' STREET  
N. 89°-39'-16" E.



16' STREET

16' STREET  
N. 89°-39'-16" E.



S. 89°-39'-16" W.

STREET

PLEASANT STREET - 50'

S. 89°-43'-03" E.

Fd. 3/4" Dia. Iron  
Ref: F.Bk. 707, page 33

ENTRANCE

PROPERTY LINE  
N. 0°-22'-03" W.

### 2003 Addition to GREEN WOOD CEMETERY

Lots 499-638  
Village of DeGraff  
Section 7 Town 2 Range 14 - B.M.R.S.  
Pleasant Township  
Logan County, Ohio  
Part of Parcel Number 35-102-19-01-003  
October 2003

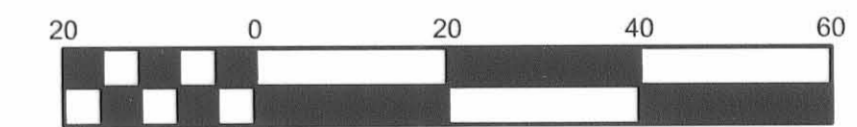
Being part of the Greenwood Cemetery Association  
of DeGraff's 7.00 Acre tract (D.Bk. Vol. 123, page 385)  
and part of a 3.00 Acre tract  
which is presently in the name of  
the Trustees of Greenwood Cemetery  
(D.Bk. Vol. 104, page 45).

Concord Place LTD  
1.707 Acres  
D.B. Vol. 406, pg. 326  
35-117-07-01-003.001

5/8" diameter x 24" long  
capped rebar were set at:  
NW corner lot no. 508  
SW corner lot no. 638  
NE corner lot no. 499  
SE corner lot no. 629

5/8" diameter x 8" long rebar  
set at all other lot corners

Caps placed on re-bar were  
stamped "Logan County Engineer"



Scale 1"=20'