

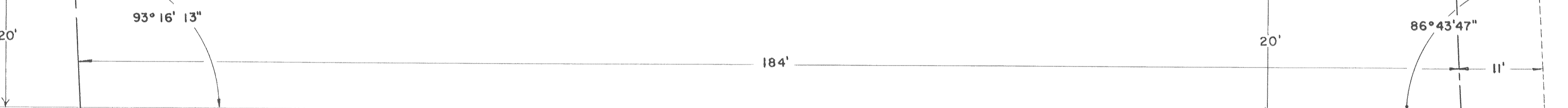
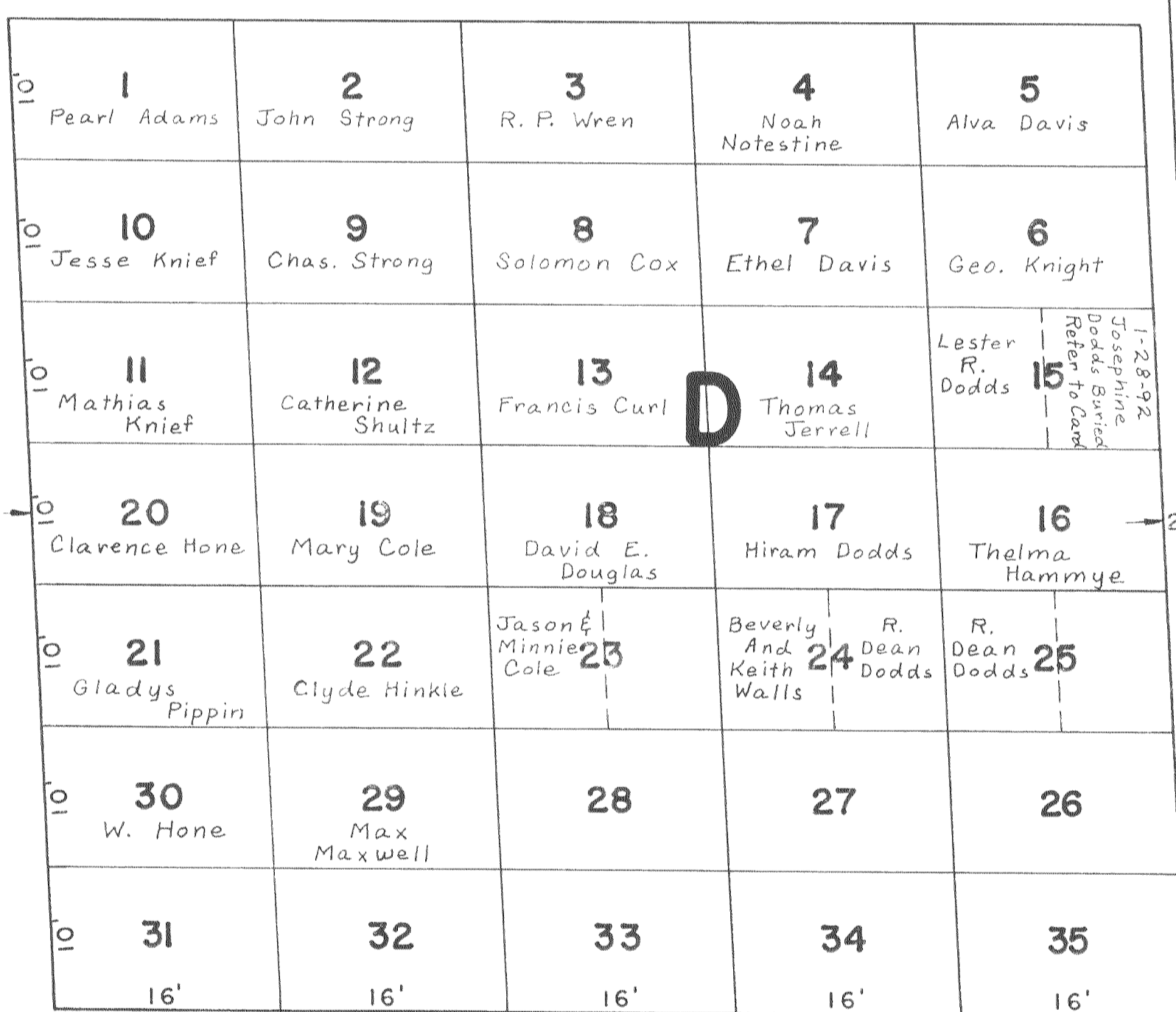
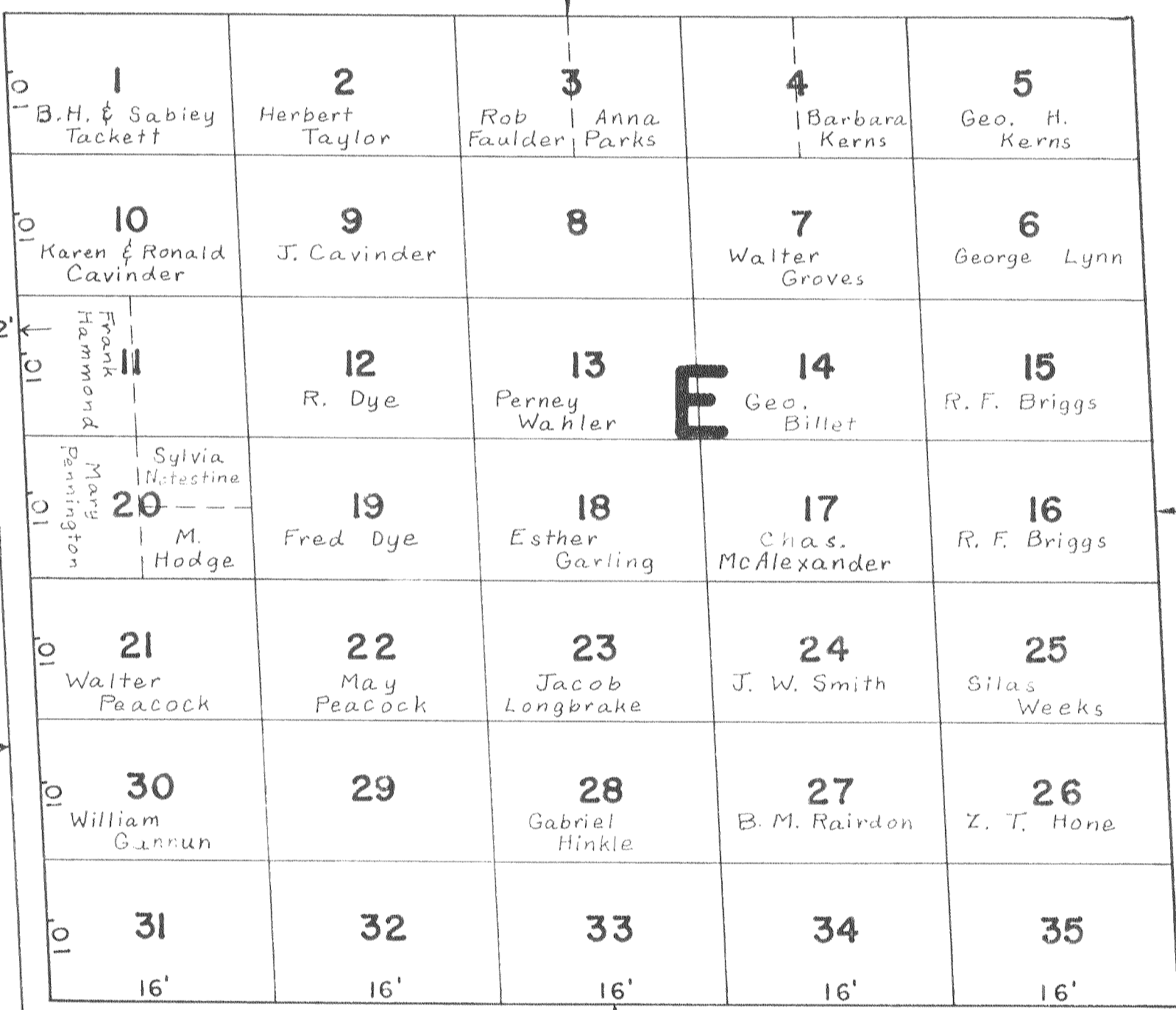
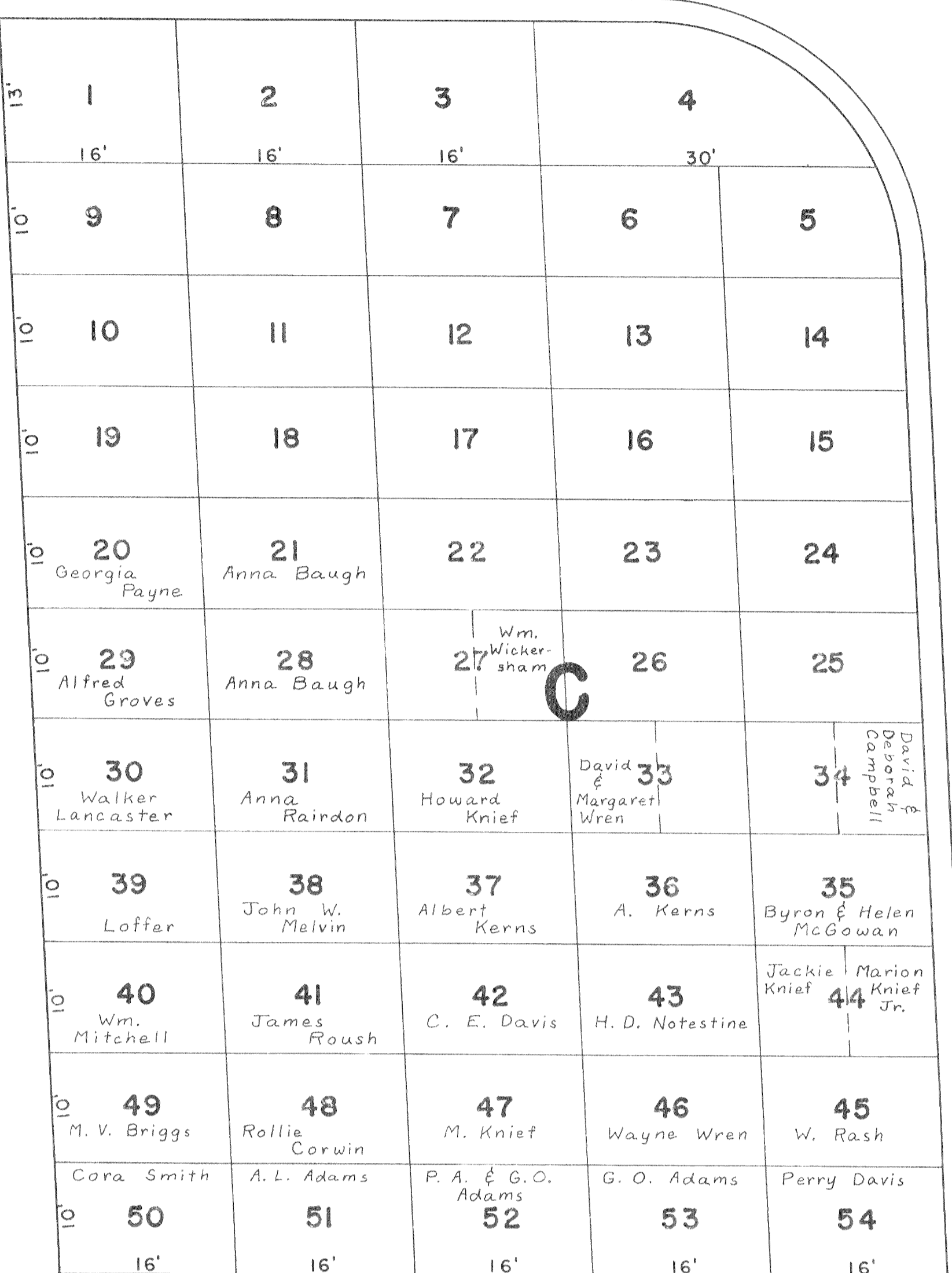
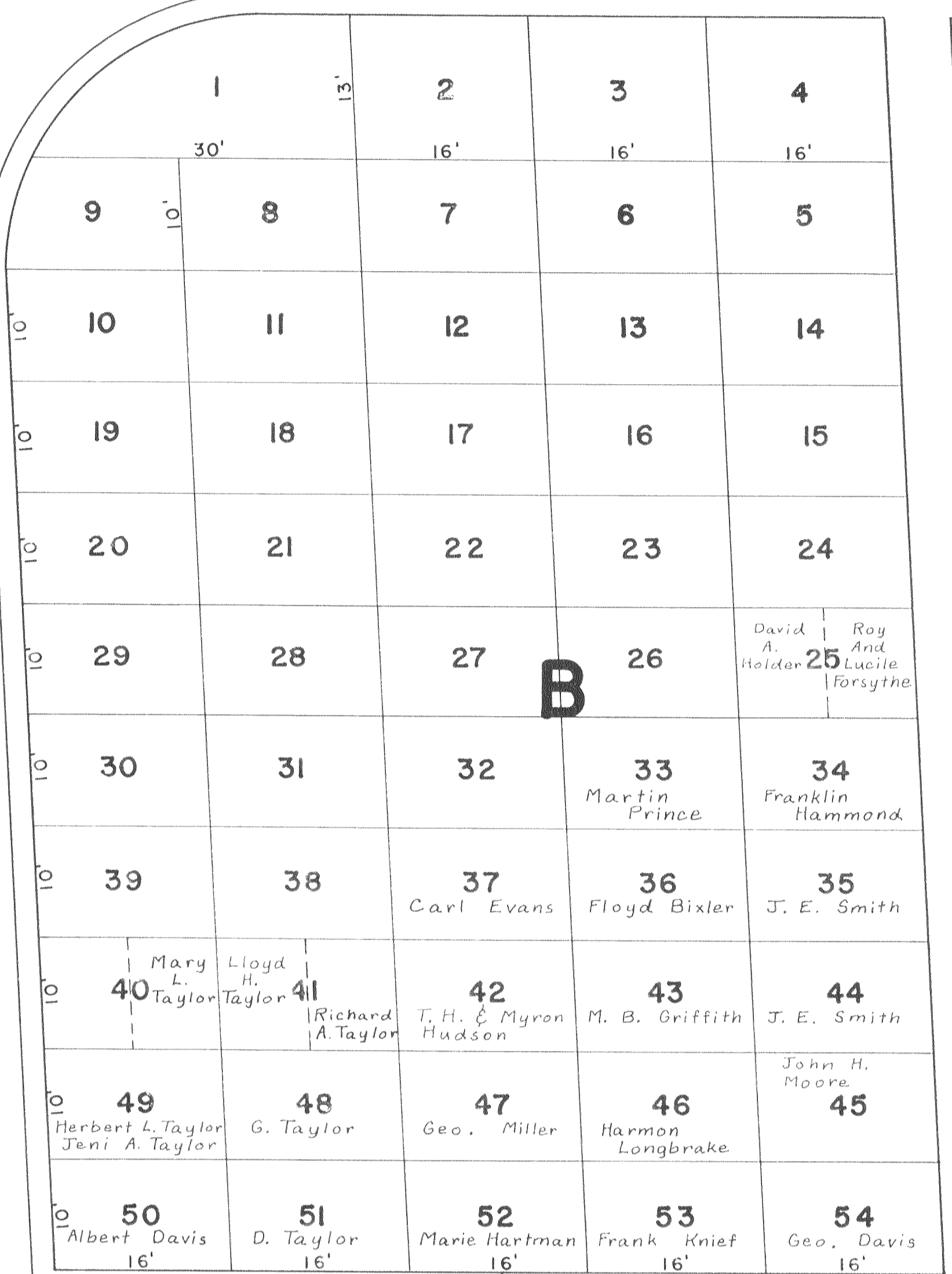
PROPERTY LINE

BLOOMFIELD AVENUE

14'

PROPERTY LINE

233'



C. H. No. 13

IRON PIN STA. 435+14.5

2697

REFERENCES

Logan County Engineer's Field Book No. 598, Page 61.
Rea Cemetery Plat - W. A. Ginn, Engineer, 1891, as redrawn by Homer D. Notestine, 1929.

Surveyed by Dan L. Dodson Sept. 8, 1961
Field Notes in Field Book No. 702, Page 64
Drawn by Hadyn E. Notestine

REA CEMETERY
S. 27-T. 7-R. 8
BLOOMFIELD TOWNSHIP
LOGAN COUNTY, OHIO
1961

SCALE - 1"=10'