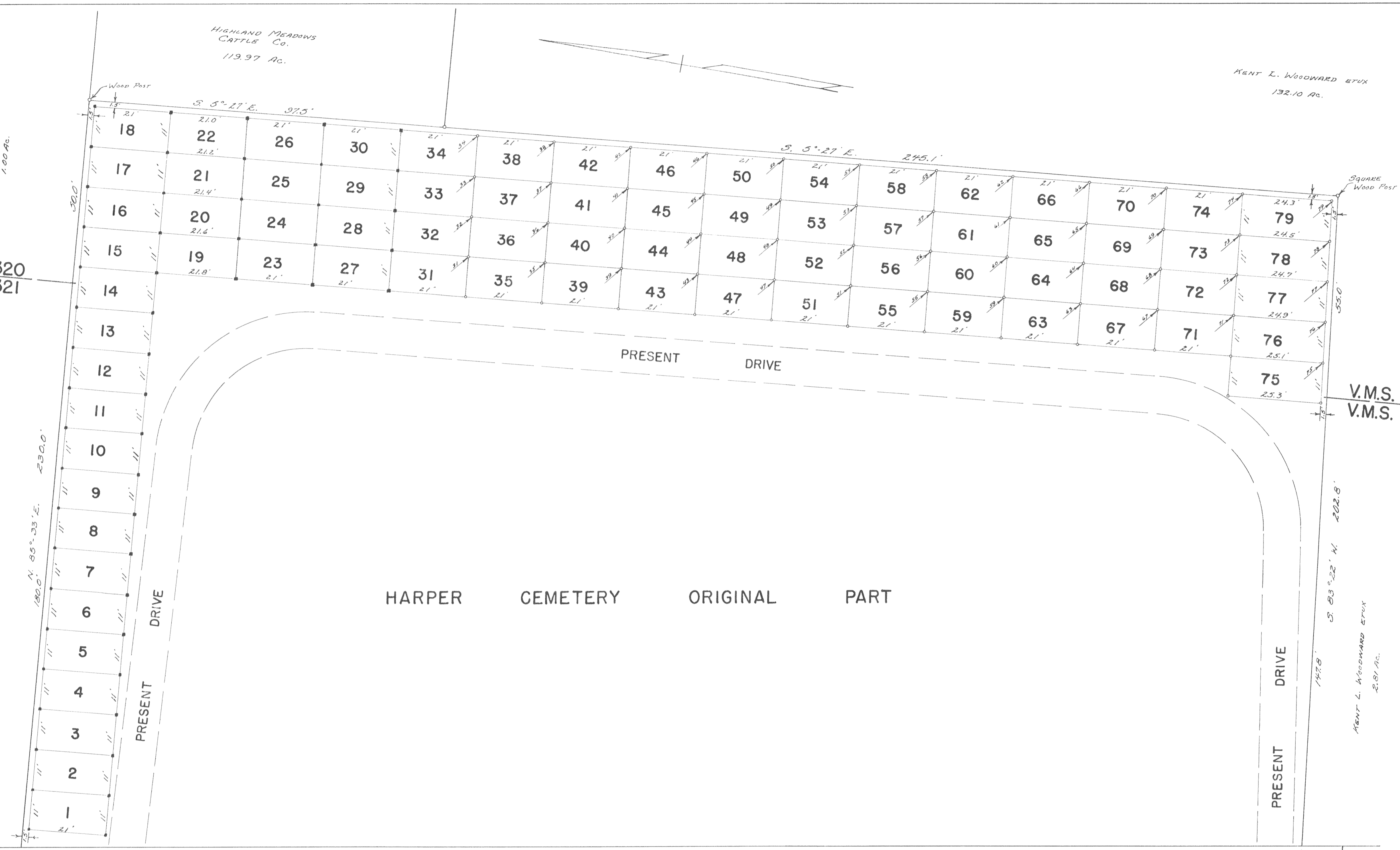


HIGHLAND MEADOWS  
CATTLE Co.  
113.97 Ac.

KENT L. WOODWARD ETUX  
132.10 Ac.

RUBEN STENHART  
1.00 Ac.  
V.M.S. 3320  
V.M.S. 3321

V.M.S. 3320  
V.M.S. 3321



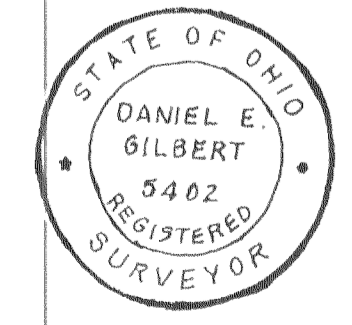
### HARPER CEMETERY LOTS

RUSHCREEK TOWNSHIP  
LOGAN COUNTY, OHIO

SCALE: 1" = 15'

NOVEMBER 30, 1968

Notes: This Tracing Filed In The  
LOGAN COUNTY ENGINEERS OFFICE.



T. R.  
No. 57

- - INDICATES IRONS FOUND OR SET BY F. F. WRIGHT, REG. SUR. NO. 1673, AS SHOWN PLAN Z-21, MARCH 1959.
- - LOTS 1 THROUGH 30 INCLUSIVE MARKED BY 4" X 4" SQUARE MARBLE STONES SET MAY 1, 1959. NUMBERED STONES AT THE S. E. CORNER OF EACH LOT.

LOTS 31 THROUGH 79 INCLUSIVE STAKED FOR THE PLACEMENT OF 4" X 4" SQUARE MARBLE STONES - 2" WOODEN HUBS SET. THE FLATS AT THE S. E. CORNER OF EACH LOT BEING MARKED WITH THE LOT NUMBER AS INDICATED ON NOVEMBER 30, 1968.

Surveyed And Platted By:  
DANIEL E. GILBERT, P.S.  
Reg. Sur. No. 5402  
428 N. MADRIVER ST.  
BELLEFONTAINE, OHIO 43311