

HUNTSVILLE CEMETERY

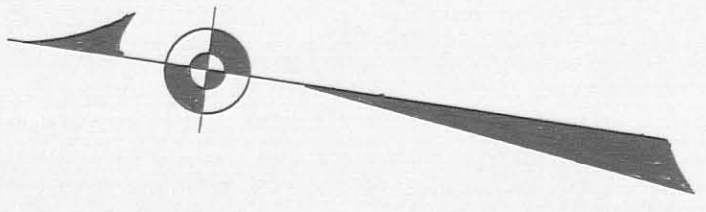
MC-ARTHUR TOWNSHIP, LOGAN COUNTY, OHIO

V. M. S. NO. 9903-9925

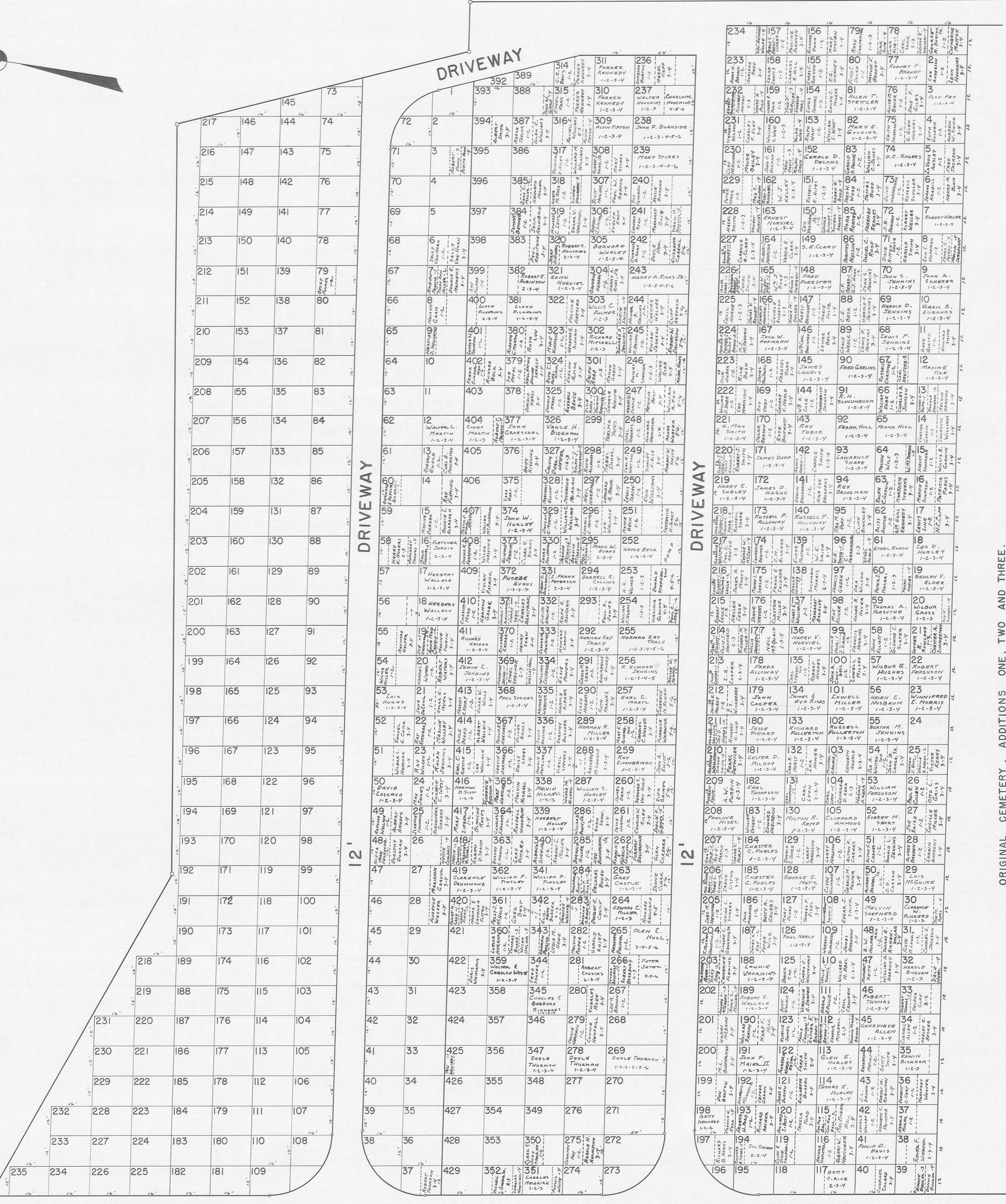
1974

SCALE: 1" = 20 FEET

C. H. NO. 130



U. S. R. NO. 33 - S. R. NO. 117
INTERCHANGE



ADDITION NO. FIVE
LOTS 1 THRU 235 INCLUSIVE

ADDITION NO. FOUR
LOTS 1 THRU 429 INCLUSIVE

NOTE: LOTS 235, 312, 313, 314 PT., 389 PT.,
390, 391 AND 392 PT., VACATED FOR
DRIVEWAY PURPOSES.

REVISED TO:
JUNE 17, 1991
THOMAS E. GILBERT - DEG

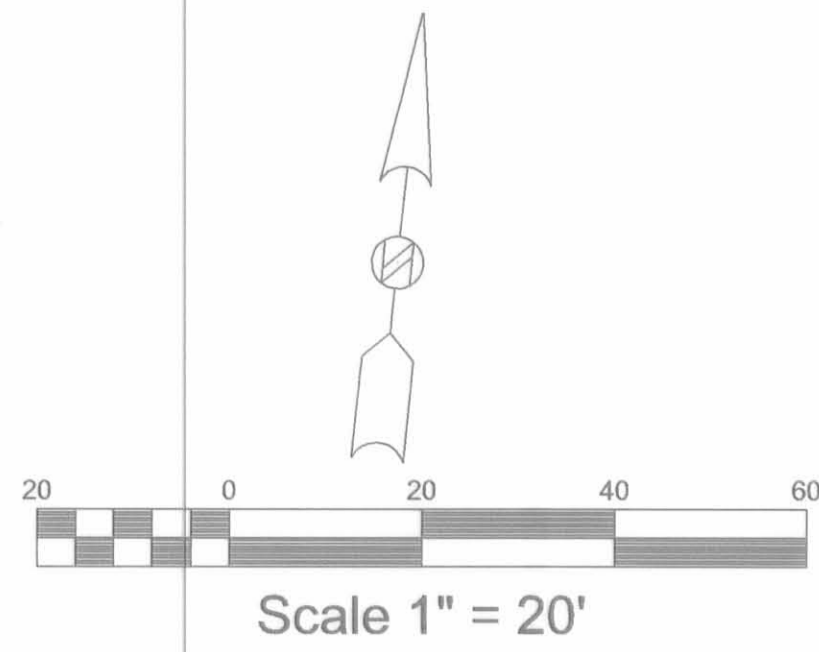
DRAWN BY:
DANIEL E. GILBERT, P. S.

TRUSTEES:
GLEN HURLEY
EARL MARTZ
MORRIS SHIELDS
CLERK:
RALPH CARTER

Huntsville Cemetery South Addition
 Vacation of Various Lots
 V.M.S. No. 9881
 Mc Arthur Twp., Logan County, Ohio
 December 2000

Dedication
 Know all men by these presents that the trustees
 of Huntsville Cemetery South Addition
 have authorized the vacating of various lots
 in Accordance with the annexed plat.

Myrta Wallace
Robert F. Ginnings
D. Bruce Tracey
 Trustees of Huntsville Cemetery



HUNTSVILLE CEMETERY ADDITION NO. 4

Scale: 1" = 20'

← TO HUNTSVILLE COUNTY HIGHWAY NO. 130

	16	16	16	16	24		16	16	16	16	16	
391	390	313	312	235		234	57	56	79	78	77	76
392	389	314	311	236	PARKER KENNEDY 1-2-3-4	233	58	55	80	77	77	76
393	388	315	310	237	PARKER KENNEDY 1-2-3-4	232	59	54	81	79	78	77
394	387	316	309	238	ALVIN TIFTON 1-2-3-4	231	60	53	82	79	78	77
395	386	317	308	239	MARY STIRES 1-2-3-4-5-6	230	61	52	83	79	78	77
396	385	318	307	240	RAY SPENCE 1-2	229	62	51	84	79	78	77
397	384	319	306	241		228	63	50	85	79	78	77
398	383	320	305	242		227	64	49	86	79	78	77
399	382	321	304	243		226	65	48	87	79	78	77
400	381	322	303	244		225	66	47	88	79	78	77
401	380	323	302	245		224	67	46	89	79	78	77
402	379	324	301	246	DAUGHT M. WALKER SPENCER 1-2-3-4-5	223	68	45	90	79	78	77
403	378	325	300	247		222	69	44	91	79	78	77
404	377	326	299	248		221	70	43	92	79	78	77
405	376	327	298	249		220	71	42	93	79	78	77
406	375	328	297	250		219	72	41	94	79	78	77
407	374	329	296	251		218	73	40	95	79	78	77
408	373	330	295	252		217	74	39	96	79	78	77
409	372	331	294	253	DARRELL R. COLLINS 1-2-3-4	216	75	38	97	79	78	77
410	371	332	293	254		215	76	37	98	79	78	77
411	370	333	292	255	NORMAN KAY TRACY 1-2-3-4	214	77	36	99	79	78	77
412	369	334	291	256	R. ELWOOD JENKINS 1-2-3-4-5	213	78	35	100	79	78	77
413	368	335	290	257	EARL E. MARTZ 1-2-3-4	212	79	34	101	79	78	77
414	367	336	289	258	NORMAN R. MILLER 1-2-3-4	211	80	33	102	79	78	77
415	366	337	288	259	KATHARIN M. LITTLE 1-2-3-4	210	81	32	103	79	78	77
416	365	338	287	260	ROY ZIMMERMAN 1-2-3-4	209	82	31	104	79	78	77
417	364	339	286	261		208	83	30	105	79	78	77
418	363	340	285	262		207	84	29	106	79	78	77
419	362	341	284	263		206	85	28	107	79	78	77
420	361	342	283	264		205	86	27	108	79	78	77
421	360	343	282	265		204	87	26	109	79	78	77
422	359	344	281	266		203	88	25	110	79	78	77
423	358	345	280	267		202	89	24	111	79	78	77
424	357	346	279	268		201	90	23	112	79	78	77
425	356	347	278	269		200	91	22	113	79	78	77
426	355	348	277	270		199	92	21	114	79	78	77
427	354	349	276	271		198	93	20	115	79	78	77
428	353	350	275	272		197	94	19	116	79	78	77
429	352	351	274	273		196	95	18	117	79	78	77

12' DRIVE

Z-12

Z-12