

1 2 3 4 5 6 7 8 9 10 11 12
 Sec. 6 F

North Main Avenue 20ft wide

Sec. 7 G

South Main Avenue 20 feet wide

Central Avenue 20 feet wide

Liberty Avenue 20 feet wide

Avenue 20 feet wide

Prosper Avenue 16 feet wide

Bellefontaine & West Liberty Pike

West Liberty & Ramsgate Pike

- Notes
 A = Section 1 Part 1
 B = " " 1 " 2
 C = " " 3
 D = " " 4
 E = " " 5
 F = " " 6
 G = " " 7

Black figures represent feet and inches and red ones the number of the lot upon which they are situate.

MAP OF FAIR VIEW CEMETERY

Scale 30 feet = 1 inch West Liberty, Ohio
 Jan-1904 R.H. Stone

Original Drawing and first traced copy are on file at Logan County Engineer's Office.
 Blue prints may be obtained from County Engineer's Office.
 10/23/47

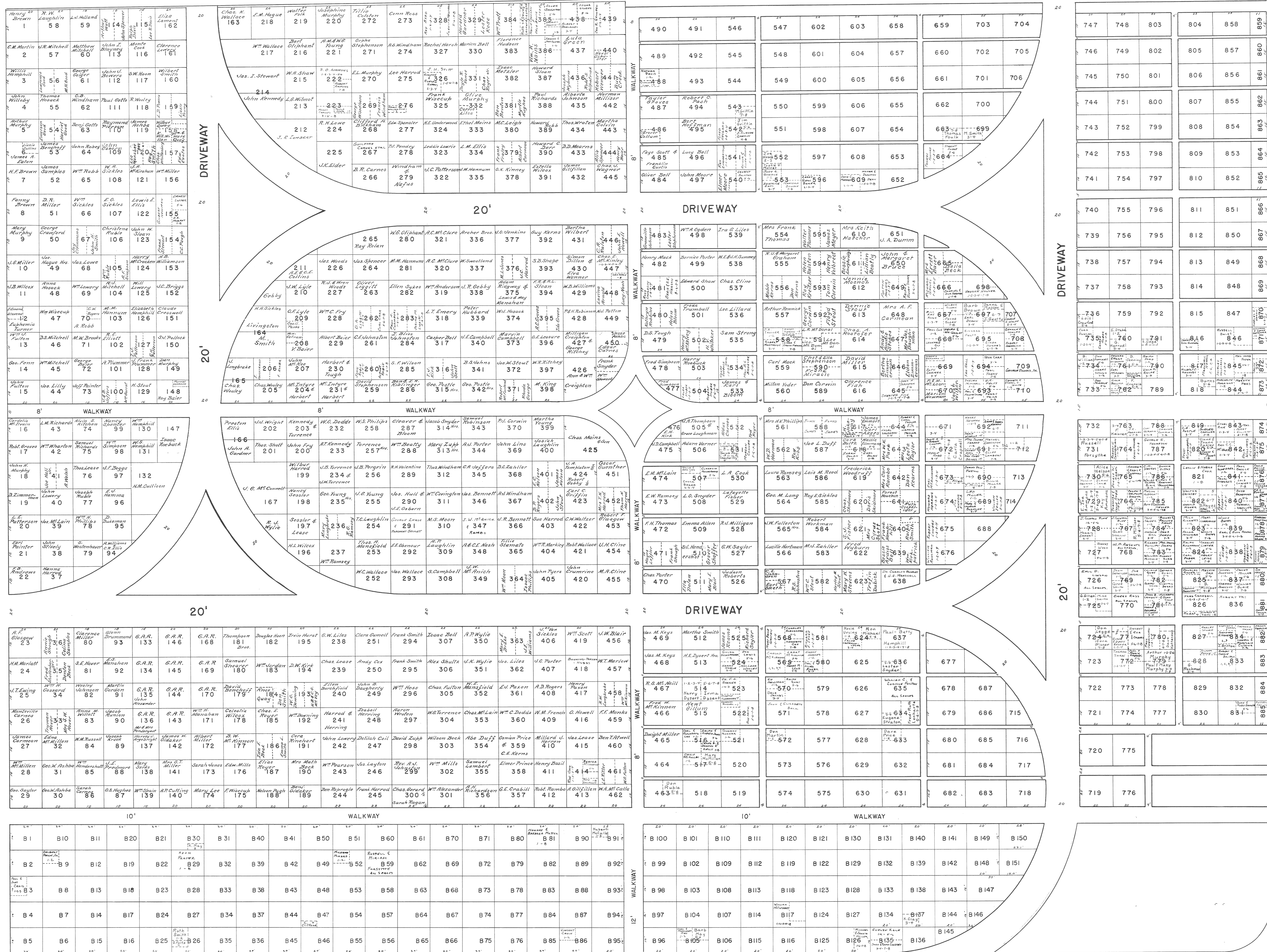
FAIRVIEW CEMETERY

RICHLAND TOWNSHIP—LOGAN COUNTY, OHIO.

STATE ROUTE 273

TO BELLE CENTER

1948



Names Revised to February 1943 By H.L.R.
More: Lots 732, 733, 743, 744, 748, 749, 810, 811, 812, 814, 815, 816, 817, 818, 819, 820, 821, 822, 823, 824, 825, 826, 827, 828, 829, 830, 831, 832, 833, 834, 835, 836, 837, 838, 839, 840, 841, 842, 843, 844, 845, 846, 847, 848, 849, 850, 851, 852, 853, 854, 855, 856, 857, 858, 859, 860, 861, 862, 863, 864, 865, 866, 867, 868, 869, 870, 871, 872, 873, 874, 875, 876, 877, 878, 879, 880, 881, 882, 883, 884, 885, 886, 887, 888, 889, 890, 891, 892, 893, 894, 895, 896, 897, 898, 899, 900, 901, 902, 903, 904, 905, 906, 907, 908, 909, 910, 911, 912, 913, 914, 915, 916, 917, 918, 919, 920, 921, 922, 923, 924, 925, 926, 927, 928, 929, 930, 931, 932, 933, 934, 935, 936, 937, 938, 939, 940, 941, 942, 943, 944, 945.

Z-4

Z-4

SCALE: 1" = 20'

DRIVEWAY

WALKWAY

DRIVEWAY

DRIVEWAY

COUNTY ROAD NO. 107