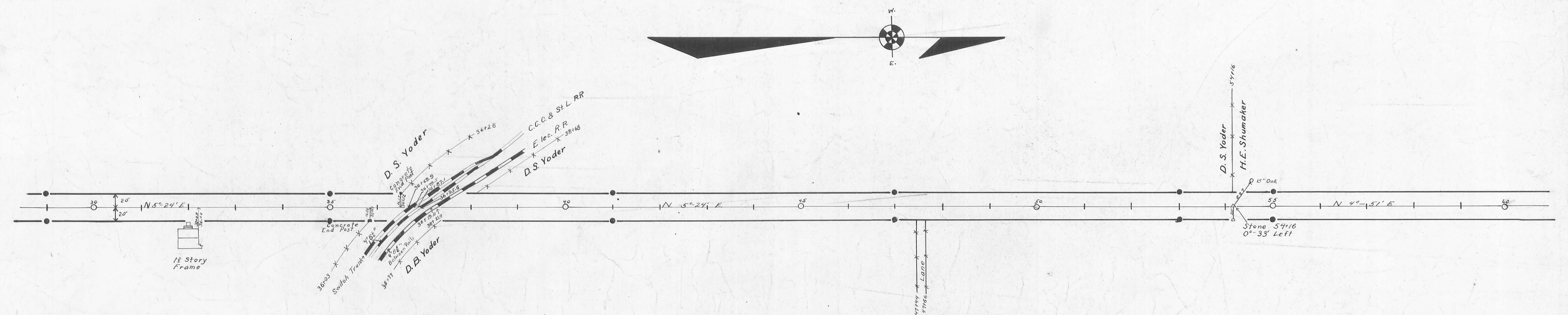


40' Road Sta. 0+30 to 9+74
Commissioners Journal No. 10 Page 185
Concrete Right-of-Way Posts Set as Shown
Field Notes Logan County Surveyors Book 596
Page 29 to 35



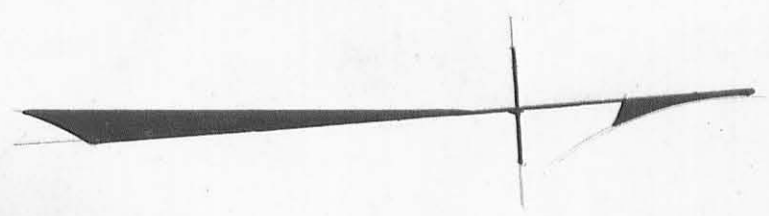
Surveyed by F.F. Wright
Drawn by John Montgomery

INDEXED ON MAP

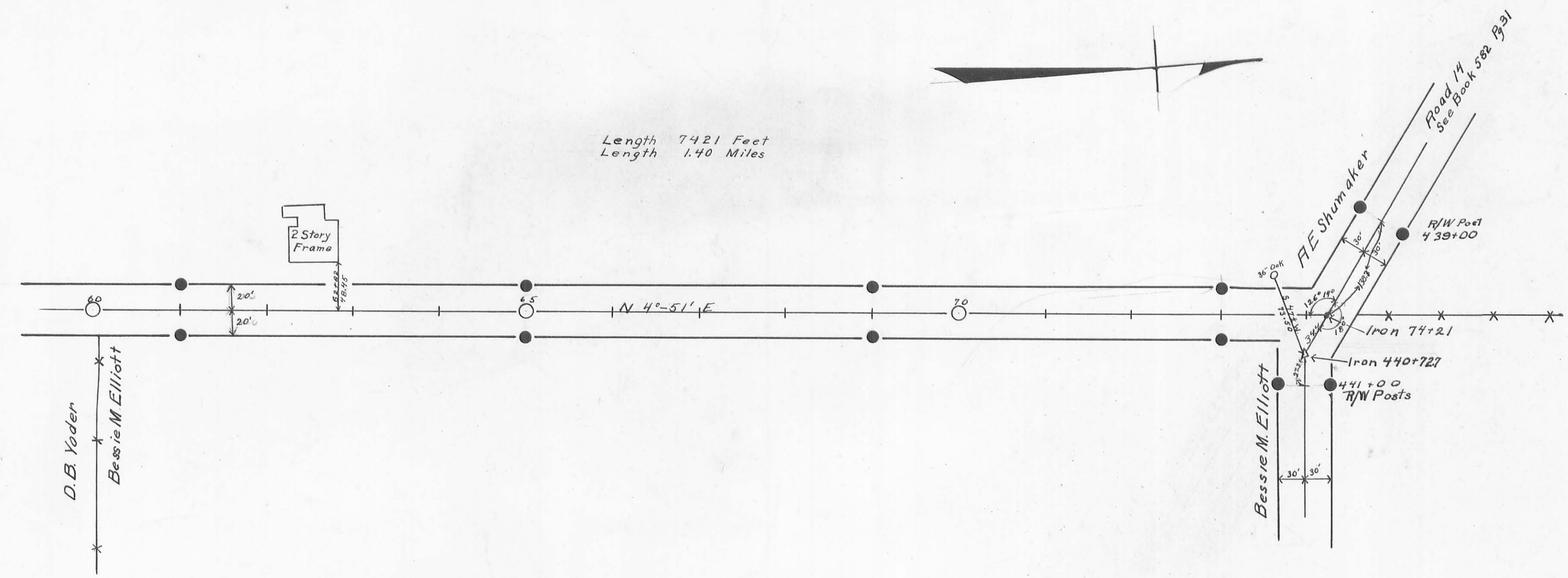
ROAD 192

X-192

X-192



Length 7421 Feet
 Length 1.40 Miles



Concrete Right-of-Way Post Set as Shown
 Field Notes Logan County Surveyors Book 536
 Page 29 to 33