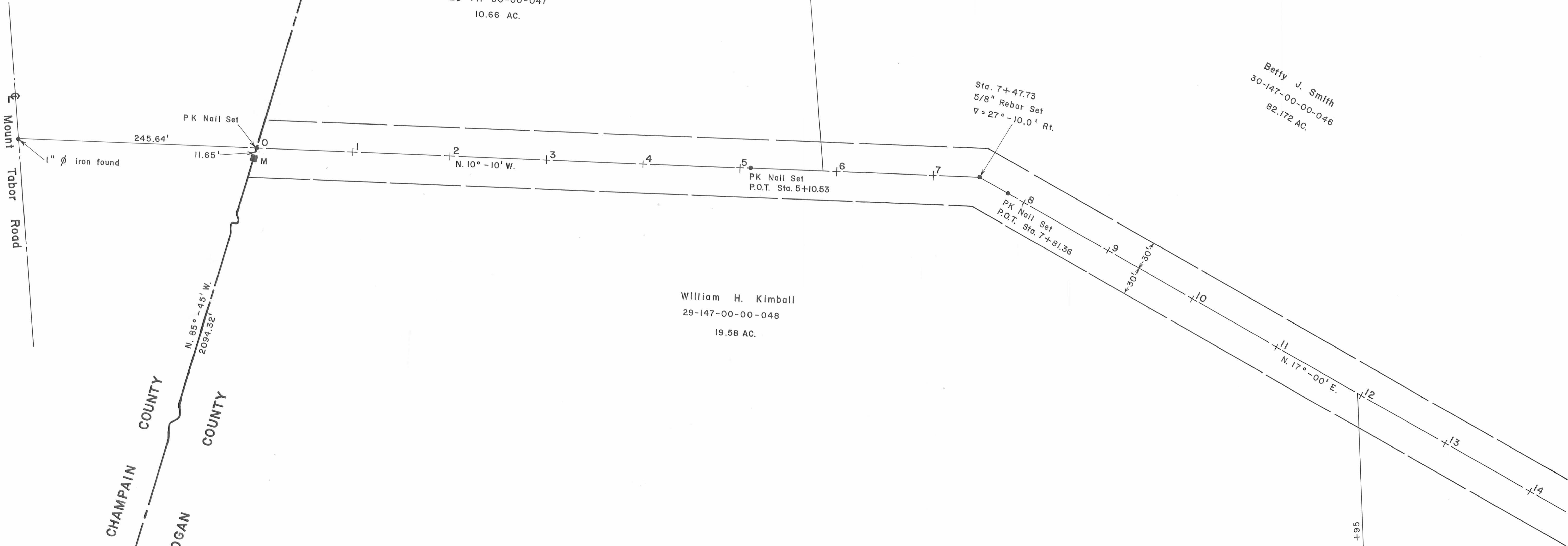


Victor B. & Ruby R. Smith  
 28-147-00-00-047  
 10.66 AC.

Betty J. Smith  
 30-147-00-00-046  
 82.172 AC.

William H. Kimball  
 29-147-00-00-048  
 19.58 AC.



These two plats represent an actual field survey. Done by the Logan County Engineer's Department, in May of 1988.

**BASIS OF BEARINGS**

the bearing N. 10° - 10' W. from sta. 0+00 to sta. 7+47.73 was taken from PLAT BOOK C, Page 243. all other bearings were calc. from angles turned in field.

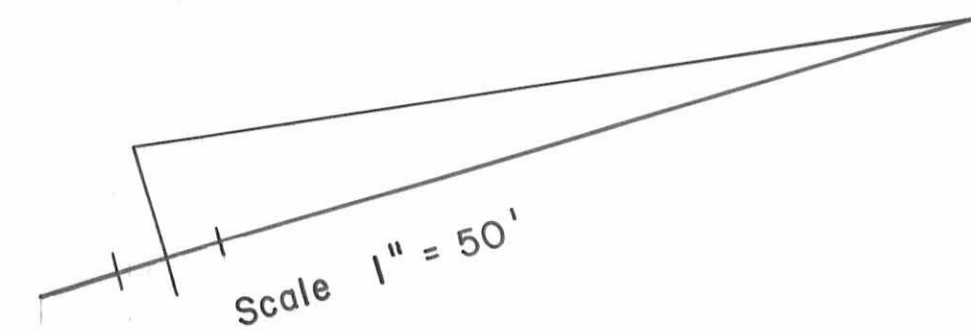
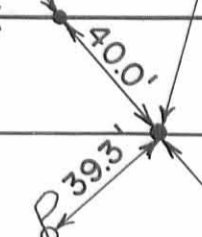
County Line Monuments L and M  
 See Plat Book C, Pages 243 & 244

DESCRIPTION CHECKED  
 LOGAN CO. ENGINEER  
 BY C.R. 6-13-88

Wilbur M. Kiser Etal  
28-147-00-00-034  
40.64 AC.

2 Story  
Frame  
No. 8970

Wood Post

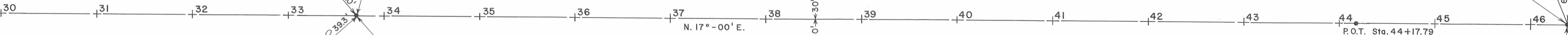


Sta. 46+38.73  
Found Copper Nail  
And Washer, Tack  
& Shiner on each  
Witness Point.

P.O.T. Sta. 44+17.79  
P.K. Nail Set

61.50'  
Fence Post

60.32'



P.O.T. Sta. 33+71.42  
Set 5/8"  $\emptyset$  re-bar

Junior Connolly  
28-147-00-00-035  
66.86 AC.

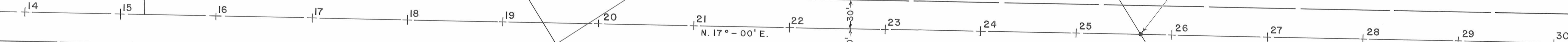
Ruth P. Foreman  
30-147-00-00-043  
40.05 AC.

Steven B. Smith  
30-147-00-00-044  
2.00 AC.

Patricia Jean Allen  
29-147-00-00-042  
1.77 AC.

V.M.S. 5042  
V.M.S. 4492  
V.M.S. 3227

P.O.T. Sta. 25+67.10  
P.K. Nail Set



David C. Linkinhoker Etux  
28-147-00-00-045  
3.00 AC.

Junior Connolly  
29-147-00-00-041  
182.1 AC.

