

We the undersigned, owners of the above described property dedicate the same, to public purposes consistent therewith clear of all obstructions which interfere with the improvement and for maintenance of the highway of the time of improvement.

OWNERS
Frank Bailey
Orlando J. Reams
Maud F. Smith for Pearl A. Reams
Ed. W. Lutz
Emma Hoefle

WITNESSES
John J. Smith
John J. Smith
John J. Smith
John J. Smith
John J. Smith

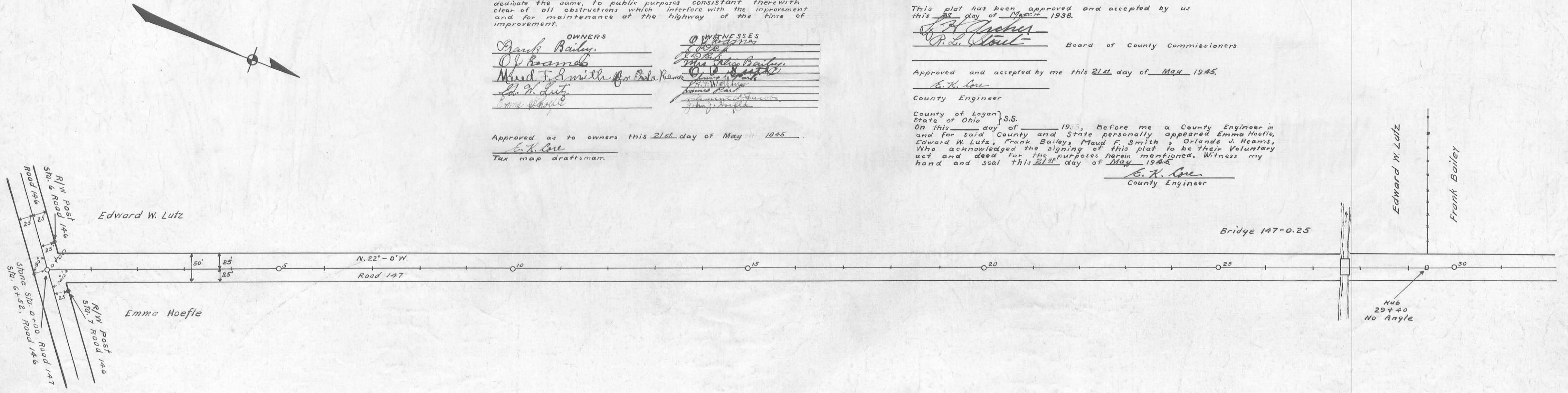
Approved as to owners this 21st day of May 1945
E. K. Gre
 Tax map draftsman.

Office of Logan County Commissioners
 This plat has been approved and accepted by us this 21st day of May 1938.
John J. Smith
John J. Smith
 Board of County Commissioners

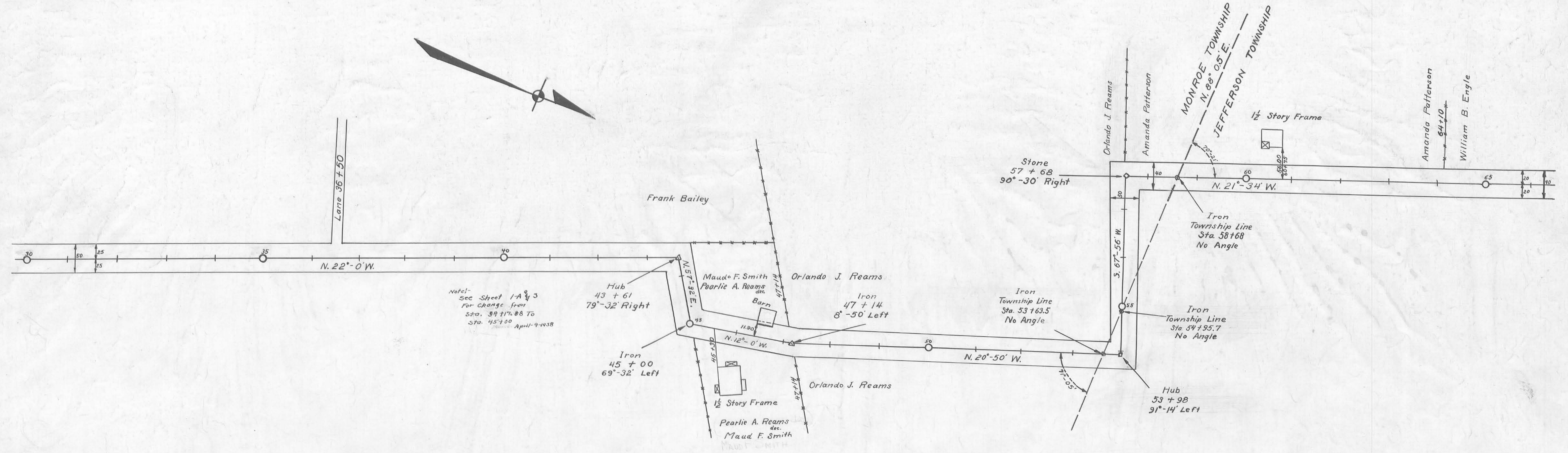
Approved and accepted by me this 21st day of May 1945.
E. K. Gre
 County Engineer

County of Logan } S.S.
 State of Ohio }
 On this 21st day of May 1945, Before me a County Engineer in and for said County and State personally appeared Emma Hoefle, Edward W. Lutz, Frank Bailey, Maud F. Smith, Orlando J. Reams, who acknowledged the signing of this plat to be their Voluntary act and deed for the purposes herein mentioned. Witness my hand and seal this 21st day of May 1945.
E. K. Gre
 County Engineer

ROAD 147



X-147A



Note:
 See Sheet 1-A & 3
 for change from
 Sta. 39+17.88 to
 Sta. 45+1.00
 April 9-1938

457 Survey
 622 Levels
 610

1537

INDEXED ON MAP

X-147A