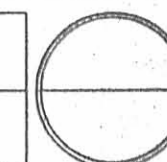


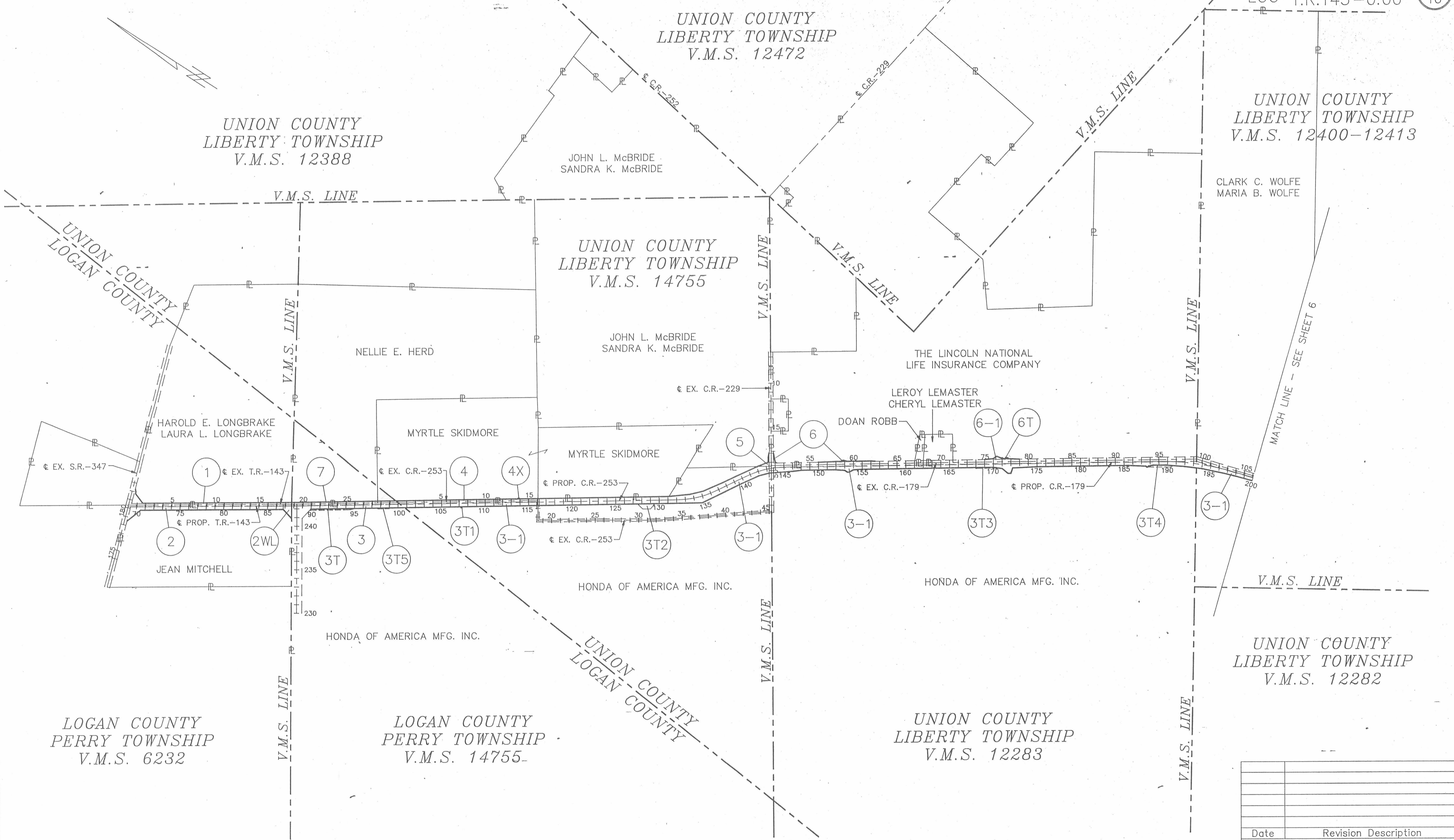
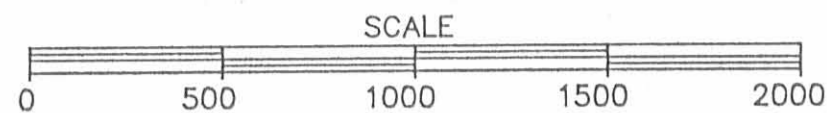
# PROPERTY MAP

FHWA REGION	STATE	PROJECT
5	OHIO	



LOGAN COUNTY  
LOG-T.R.143-0.00

5  
16



UNION COUNTY  
LIBERTY TOWNSHIP  
V.M.S. 12400-12413

CLARK C. WOLFE  
MARIA B. WOLFE

UNION COUNTY  
LIBERTY TOWNSHIP  
V.M.S. 14755

JOHN L. McBRIDE  
SANDRA K. McBRIDE

THE LINCOLN NATIONAL  
LIFE INSURANCE COMPANY

LEROY LEMASTER  
CHERYL LEMASTER

DOAN ROBB

MYRTLE SKIDMORE

HONDA OF AMERICA MFG. INC.

HONDA OF AMERICA MFG. INC.

UNION COUNTY  
LIBERTY TOWNSHIP  
V.M.S. 12282

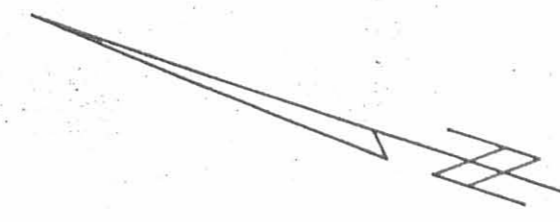
UNION COUNTY  
LIBERTY TOWNSHIP  
V.M.S. 12283

LOGAN COUNTY  
PERRY TOWNSHIP  
V.M.S. 14755

LOGAN COUNTY  
PERRY TOWNSHIP  
V.M.S. 6232

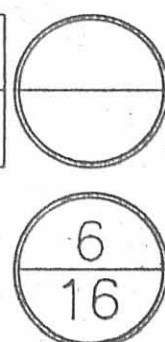
Date	Revision	Description
Completion Date: 12-9-88		

# PROPERTY MAP



FHWA REGION	STATE	PROJECT
5	OHIO	

LOGAN COUNTY  
LOG-T.R.143-0.00



## UNDERGROUND UTILITIES

THE LOCATIONS OF THE UNDERGROUND UTILITIES SHOWN ON THE PLANS ARE AS OBTAINED FROM THE OWNERS OF THE UTILITY AS REQUIRED BY SECTION 153.64 O.R.C.

## UTILITY OWNERSHIP

THE FOLLOWING UTILITIES AND OWNERS ARE LOCATED WITHIN THE WORK LIMITS OF THIS PROJECT:

### ELECTRIC

DAYTON POWER & LIGHT  
U.S. 68 NORTH  
BELLEFONTAINE, OHIO 43311  
(513) 593-1070  
JOE THOMPSON

LOGAN COUNTY RURAL ELECTRIC  
1587 CO. RD. 32, NORTH  
BELLEFONTAINE, OHIO 43311  
LARRY HEADLEY

UNION RURAL ELECTRIC COOPERATIVE INC.  
15461 STATE ROUTE 36  
P.O. BOX 393  
MARYSVILLE, OHIO 43040  
(513) 642-1826  
(513) 642-1947  
GEORGE MANNING

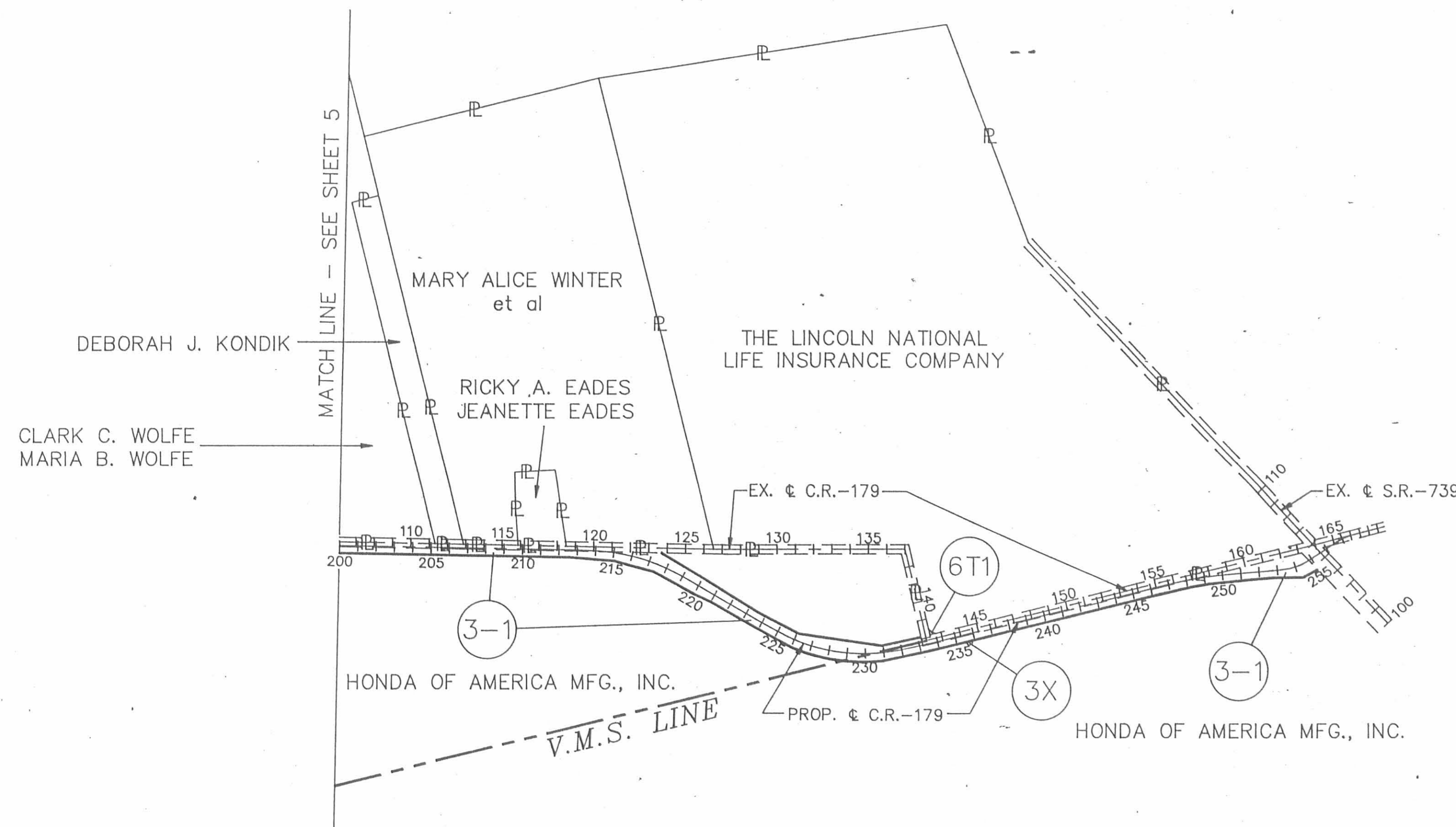
### TELEPHONE

UNITED TELEPHONE  
127 N. MAIN  
BELLEFONTAINE, OHIO 43311  
(513) 599-9276  
LINDA PINKERTON

### GAS

SHELL OIL CO.  
1500 W. BUCKEYE ST.  
LIMA, OHIO 45804  
(419) 224-2811  
MYRON MORELAND

UNION COUNTY  
LIBERTY TOWNSHIP  
V.M.S. 12400-12413



UNION COUNTY  
LIBERTY TOWNSHIP  
V.M.S. 12282

Date	Revision	Description
Completion Date: 12-9-88		

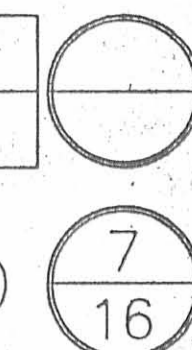
TOTAL NUMBER OF :  
 7 OWNERSHIPS  
 0 TOTAL TAKES  
 0 OWNERSHIPS WITH STRUCTURES INVOLVED  
 0 OWNERSHIPS WITH "P" ITEMS

# SUMMARY OF ADDITIONAL RIGHT-OF-WAY

JOB NO. 07770(0)  
 P.F. NO. 1352

FHWA REGION	STATE	PROJECT
5	OHIO	

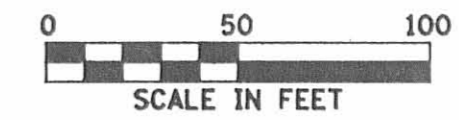
LOGAN COUNTY  
 LOG-T.R.143-0.00



PARCEL	OWNER	SHEET NO.	OWNER'S RECORD		RECORD AREA	TOTAL P.R.O.	GROSS TAKE	P.R.O. IN TAKE	NET TAKE	STRUCTURE	NET RESIDUE		TYPE FUND	REMARKS & PERSONALTY	AS ACQUIRED		
			BOOK	PAGE							LEFT	RIGHT			DATE	BOOK	PAGE
1	HAROLD E. & LAURA L. LONGBRAKE (H&W)	8	407	741	110.09	2.914	1.173	0.891	0.282		106.89		STATE				
2WL 2	JEAN MITCHELL JEAN MITCHELL	8 8	360	848	43	1.434	0.248	0.040	0.208			39.50	STATE				
3	HONDA OF AMERICA MFG., INC.	8 & 9	56	241	4273.520		1.434	0.419	1.015				STATE				
3-1	HONDA OF AMERICA MFG., INC.	9 TO 16	305	656	3192.022		26.002	6.085	19.917				STATE				
3X	HONDA OF AMERICA MFG., INC.	15					0.014	0.000	0.014				STATE				
3T	HONDA OF AMERICA MFG., INC.	8	306	760	8.469		0.170	0.000	0.170				STATE	CONNECT TILE, GRADE & SEED.			
3T1	HONDA OF AMERICA MFG., INC.	9					0.007	0.000	0.007				STATE	CONNECT TILE, GRADE & SEED.			
3T2	HONDA OF AMERICA MFG., INC.	9					0.200	0.000	0.200				STATE	CONSTRUCT DRIVE, GRADE & SEED.			
3T3	HONDA OF AMERICA MFG., INC.	11					0.054	0.000	0.054				STATE	CONNECT TILE, GRADE & SEED.			
3T4	HONDA OF AMERICA MFG., INC.	12					0.122	0.000	0.122				STATE	CONNECT TILE, GRADE & SEED.			
3T5	HONDA OF AMERICA MFG., INC.	8					0.030	0.000	0.030				STATE	CONNECT TILE, GRADE & SEED.			
4	MYRTLE SKIDMORE	8 & 9	200	111	90.28	0.648	0.845	0.648	0.197		89.44		STATE	RECORD AREA IS FROM TAX MAP.			
4X	MYRTLE SKIDMORE	9	200 203	115 181			0.006	0.000	0.006				STATE				
5	JOHN L. & SANDRA K. McBRIDE	10	304	377	247.15	2.93	0.167	0.082	0.085		244.14		STATE				
6	THE LINCOLN NATIONAL LIFE INSURANCE COMPANY	10 & 11	296	453	491.03	8.19	0.845	0.748	0.097		482.66		STATE	RECORD AREA FROM DEED PARCELS 3,4,5 & 7 ONLY.			
6-1	THE LINCOLN NATIONAL LIFE INSURANCE COMPANY	11					0.314	0.230	0.084				STATE				
6T	THE LINCOLN NATIONAL LIFE INSURANCE COMPANY	11					0.024	0.000	0.024				STATE	CONNECT TILE, GRADE & SEED.			
6T1	THE LINCOLN NATIONAL LIFE INSURANCE COMPANY	14					0.011	0.000	0.011				STATE	PAVEMENT REMOVAL.			
7	NELLIE E. HERD	8	308	501	108.09	0.409	0.456	0.409	0.047		107.63		STATE				

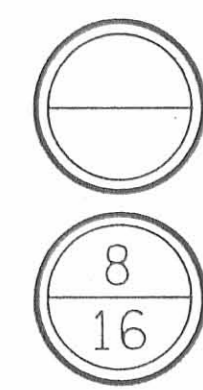
Date: 12-9-88  
 Revision Description: R/W SUMMARY SHEET

LOGAN COUNTY  
PERRY TOWNSHIP  
V.M.S. 6232



FHWA REGION	STATE	PROJECT
5	OHIO	

LOGAN COUNTY  
LOG-T.R.143-0.00

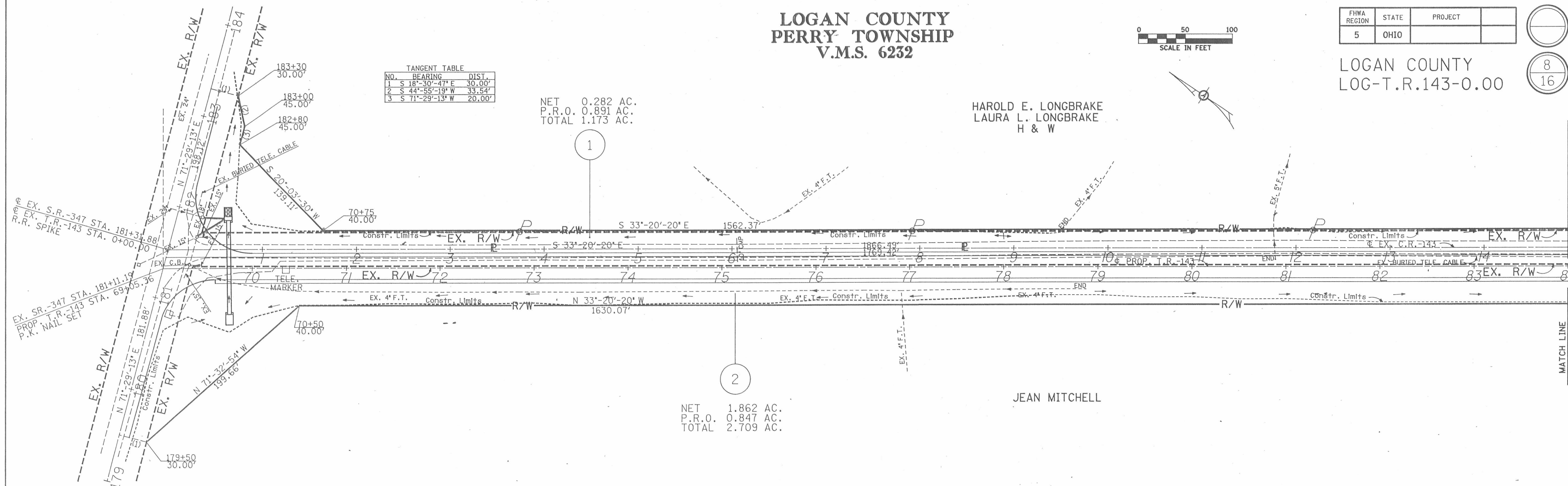


TANGENT TABLE

NO.	BEARING	DIST.
1	S 18°-30'-47" E	30.00'
2	S 44°-55'-19" W	33.54'
3	S 71°-29'-13" W	20.00'

NET 0.282 AC.  
P.R.O. 0.891 AC.  
TOTAL 1.173 AC.

HAROLD E. LONGBRAKE  
LAURA L. LONGBRAKE  
H & W



NET 1.862 AC.  
P.R.O. 0.847 AC.  
TOTAL 2.709 AC.

JEAN MITCHELL

V.M.S. 6232

HAROLD E. LONGBRAKE  
LAURA L. LONGBRAKE  
H & W

NET 0.282 AC.  
P.R.O. 0.891 AC.  
TOTAL 1.173 AC.

LOGAN COUNTY  
PERRY TOWNSHIP  
V.M.S. 14755

V.M.S. 14755

NET 0.047 AC.  
P.R.O. 0.409 AC.  
TOTAL 0.456 AC.

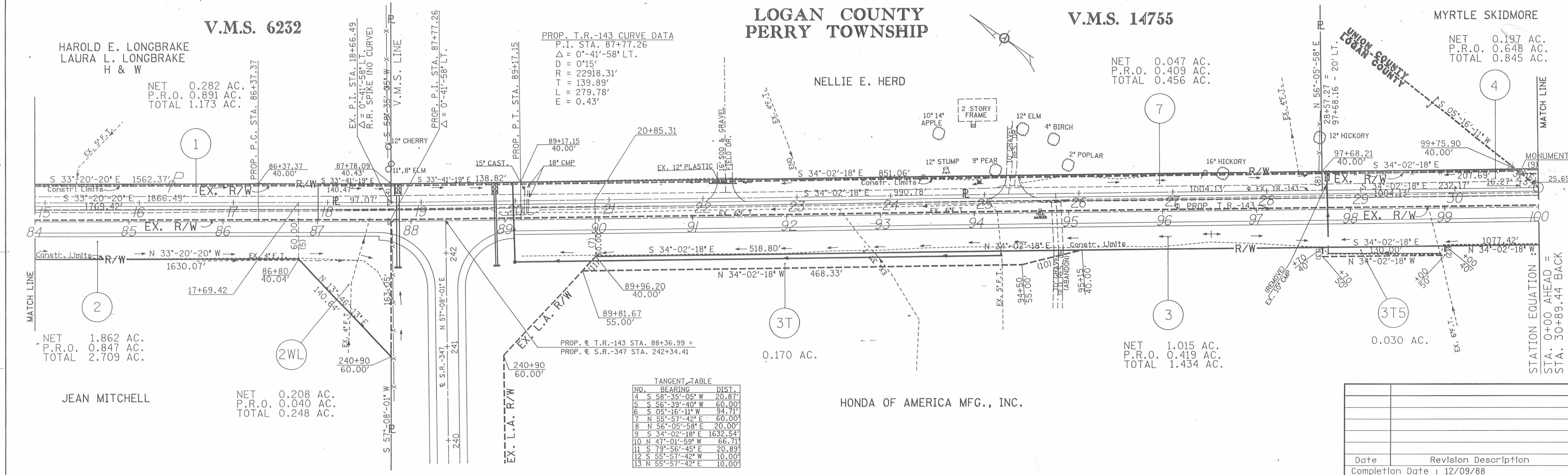
NELLIE E. HERD

MYRTLE SKIDMORE

NET 0.197 AC.  
P.R.O. 0.648 AC.  
TOTAL 0.845 AC.

PROP. T.R.-143 CURVE DATA

P.I. STA. 87+77.26  
 $\Delta = 0^\circ-41'-58" \text{ LT.}$   
 $D = 0'15"$   
 $R = 22918.31'$   
 $T = 139.89'$   
 $L = 279.78'$   
 $E = 0.43'$



NET 1.862 AC.  
P.R.O. 0.847 AC.  
TOTAL 2.709 AC.

JEAN MITCHELL

NET 0.208 AC.  
P.R.O. 0.040 AC.  
TOTAL 0.248 AC.

TANGENT TABLE

NO.	BEARING	DIST.
4	S 58°-35'-05" W	20.87'
5	S 56°-39'-40" W	60.00'
6	S 05°-16'-11" W	94.71'
7	N 53°-57'-42" E	60.00'
8	N 56°-05'-58" E	20.00'
9	S 34°-02'-18" E	1632.54'
10	N 47°-01'-59" W	66.71'
11	S 79°-56'-45" E	20.89'
12	S 55°-57'-42" W	10.00'
13	N 55°-57'-42" E	10.00'

HONDA OF AMERICA MFG., INC.

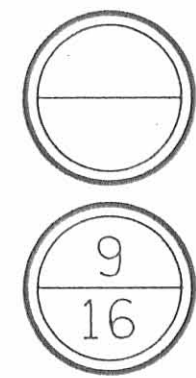
NET 1.015 AC.  
P.R.O. 0.419 AC.  
TOTAL 1.434 AC.

0.030 AC.

Date	Revision	Description
Completion Date : 12/09/88		

UNION COUNTY  
LIBERTY TOWNSHIP  
V.M.S. 14755

FHWA REGION	STATE	PROJECT
5	OHIO	



LOGAN COUNTY  
LOG-T.R.143-0.00

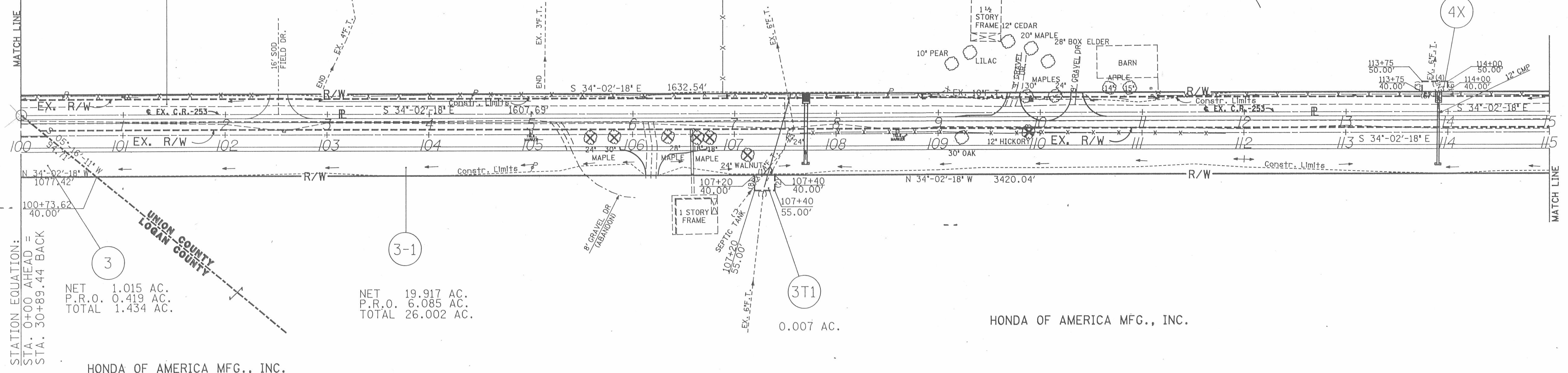
TANGENT TABLE

NO.	BEARING	DIST.
1	S 34°-02'-18" E	20.00'
2	S 55°-57'-42" W	15.00'
3	N 55°-57'-42" E	10.00'
4	S 34°-02'-18" E	25.00'
5	N 34°-02'-18" W	25.00'
6	S 55°-57'-42" W	10.00'
7	N 34°-02'-18" W	20.00'
8	N 55°-57'-42" E	15.00'

NET 0.197 AC.  
P.R.O. 0.648 AC.  
TOTAL 0.845 AC.

MYRTLE SKIDMORE

0.006 AC.



STATION EQUATION:  
STA. 0+00 AHEAD =  
STA. 30+89.44 BACK

NET 1.015 AC.  
P.R.O. 0.419 AC.  
TOTAL 1.434 AC.

NET 19.917 AC.  
P.R.O. 6.085 AC.  
TOTAL 26.002 AC.

0.007 AC.

HONDA OF AMERICA MFG., INC.

NET 0.197 AC.  
P.R.O. 0.648 AC.  
TOTAL 0.845 AC.

LIBERTY TOWNSHIP  
V.M.S. 14755

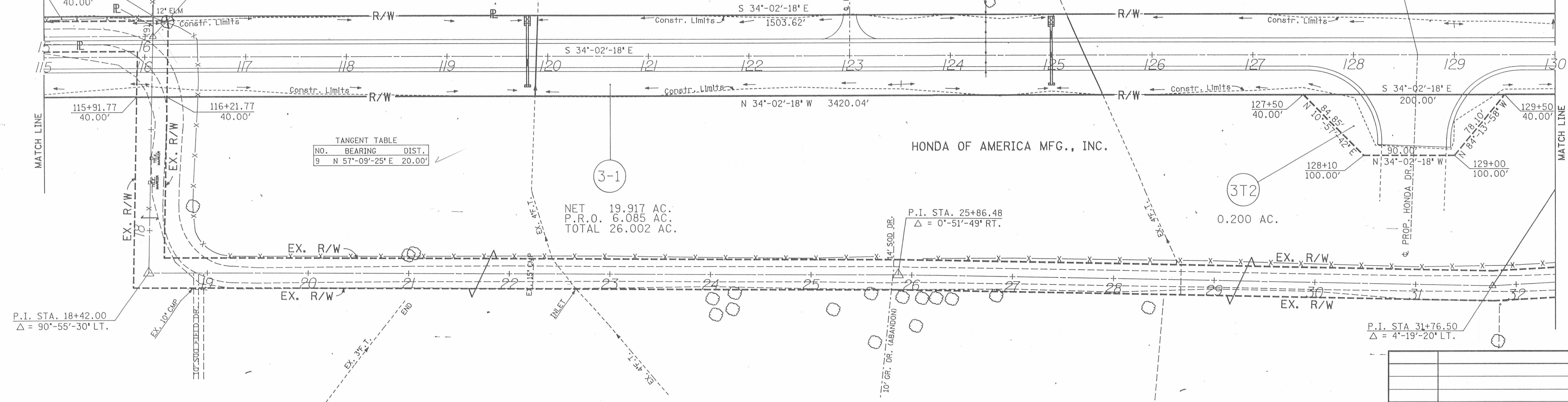
HONDA OF AMERICA MFG., INC.

TANGENT TABLE

NO.	BEARING	DIST.
9	N 57°-09'-25" E	20.00'

NET 19.917 AC.  
P.R.O. 6.085 AC.  
TOTAL 26.002 AC.

0.200 AC.



P.I. STA. 18+42.00  
 $\Delta = 90^\circ-55'-30"$  LT.

P.I. STA. 25+86.48  
 $\Delta = 0^\circ-51'-49"$  RT.

P.I. STA. 31+76.50  
 $\Delta = 4^\circ-19'-20"$  LT.

Date	Revision	Description
Completion Date : 12/09/88		