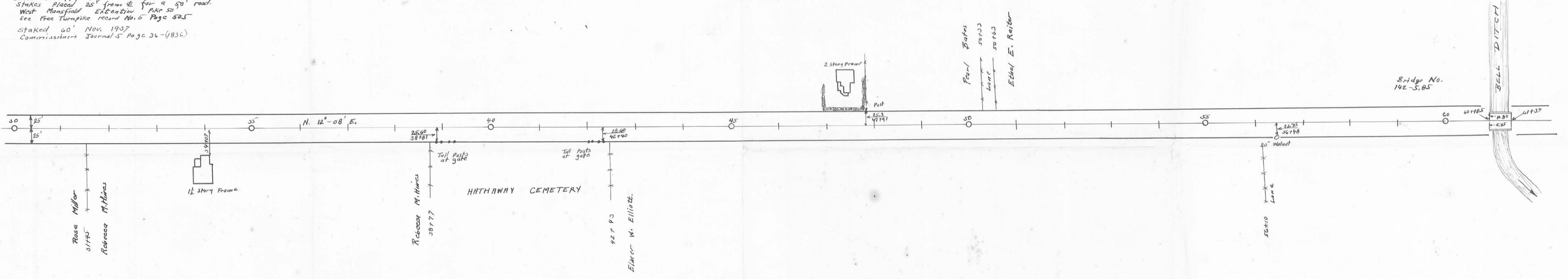
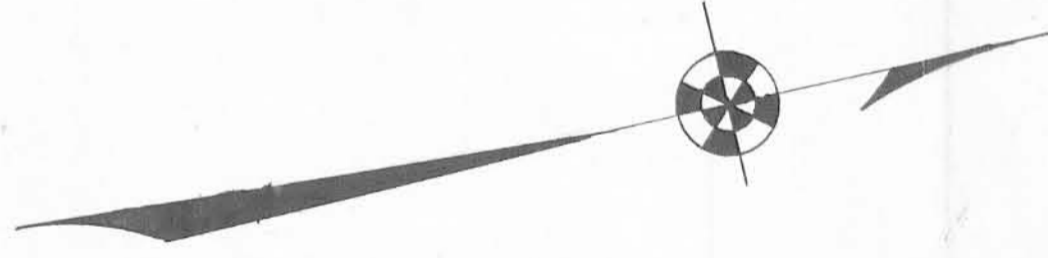


Field notes in Logan County Surveyors
 Book No. 497 Pages 60 to 63
 Stakes placed 25' from E. for a 50' road
 West Mansfield Extension Pike 50'
 See Free Turnpike Record No. 5 Page 525
 Staked 60' Nov. 1937
 Commissioners Journal 5 Page 36-(836)



Drawn by
 J. H. Miller

(1287)
 INDEXED ON MAP