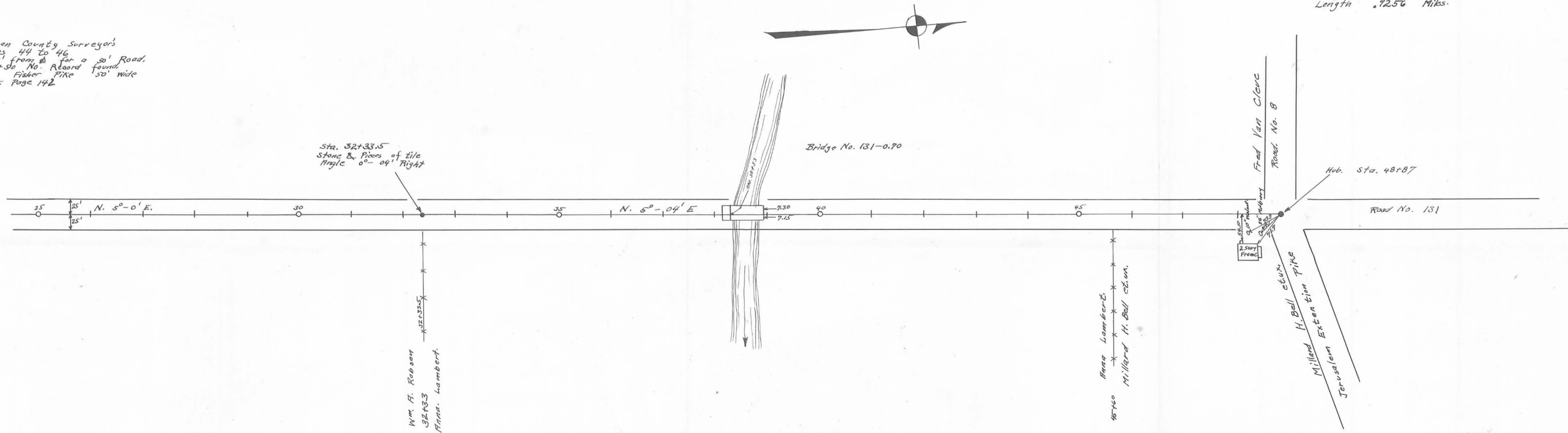


Field Notes in Logan County Surveyors  
 Book No. 561, Pages 44 to 46  
 Stakes Placed 25' from E. for a 50' Road.  
 Sta. 0+00 to 38+50 No. Record found.  
 Sta. 38+50 to 48+87 Finner Pike 50' wide  
 See Pike Plat Book Page 142

Length 4887 Feet  
 Length .9256 Miles.



Drawn by  
 G. H. W. 20.