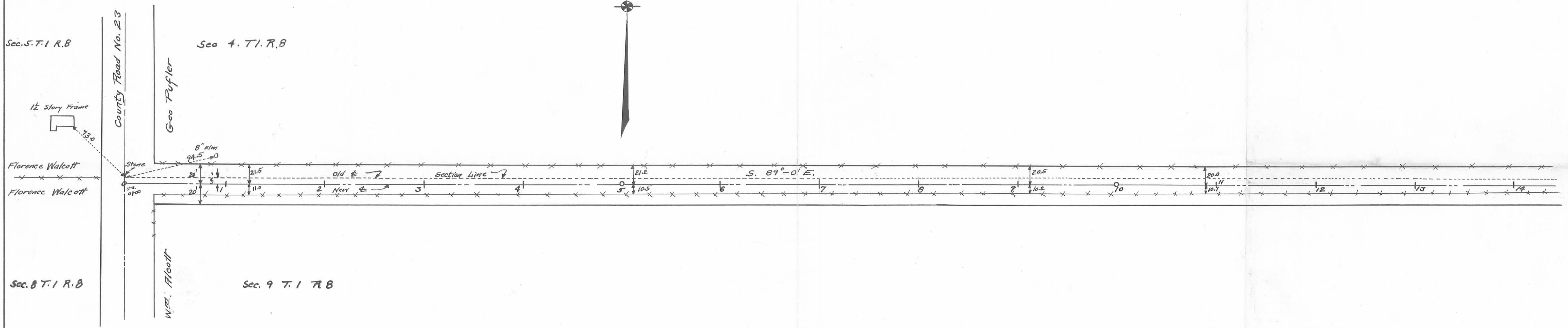


INDEXED ON MAP

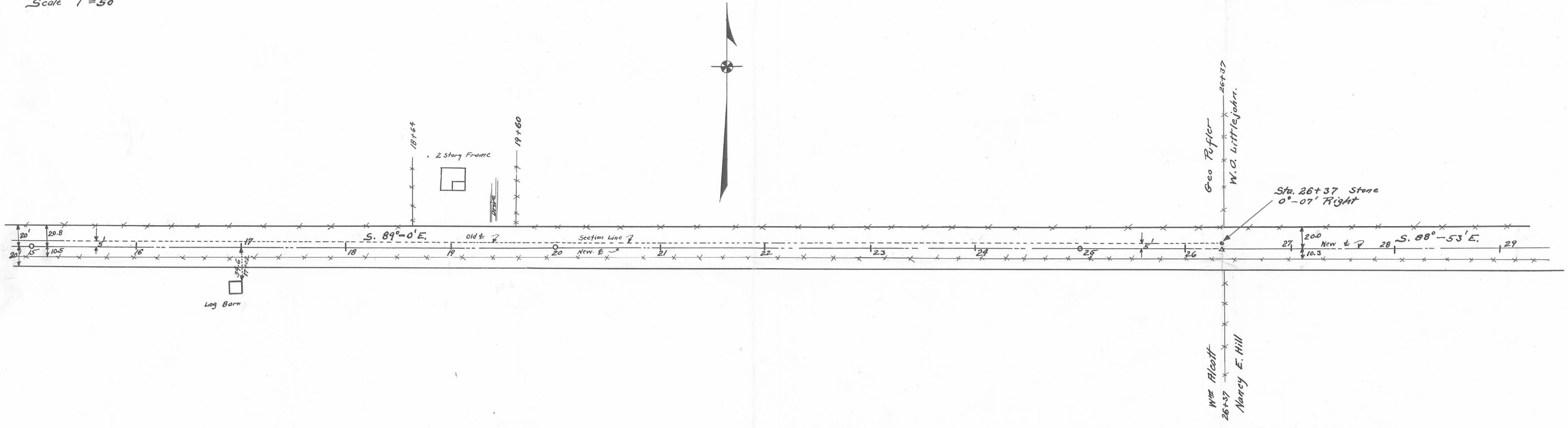
ROAD NO 76
PLEASANT TOWNSHIP
LOGAN COUNTY
1931

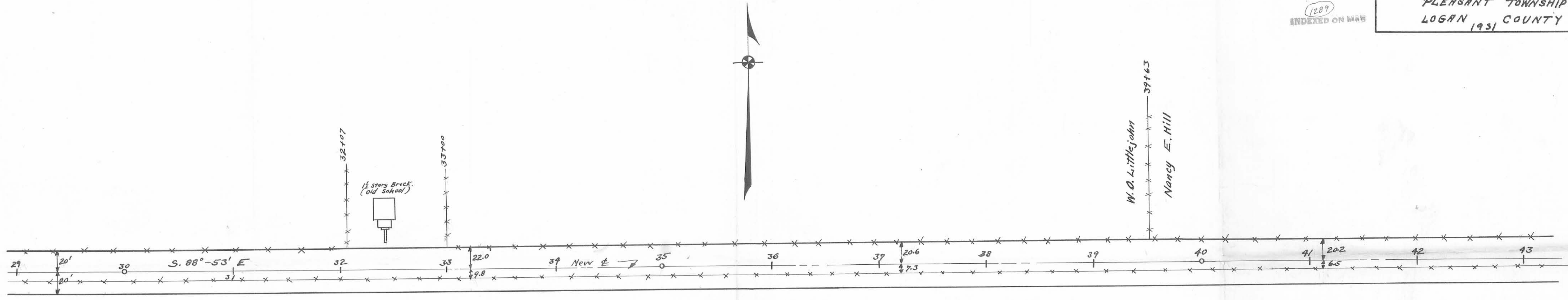
1
2



Scale 1" = 50'

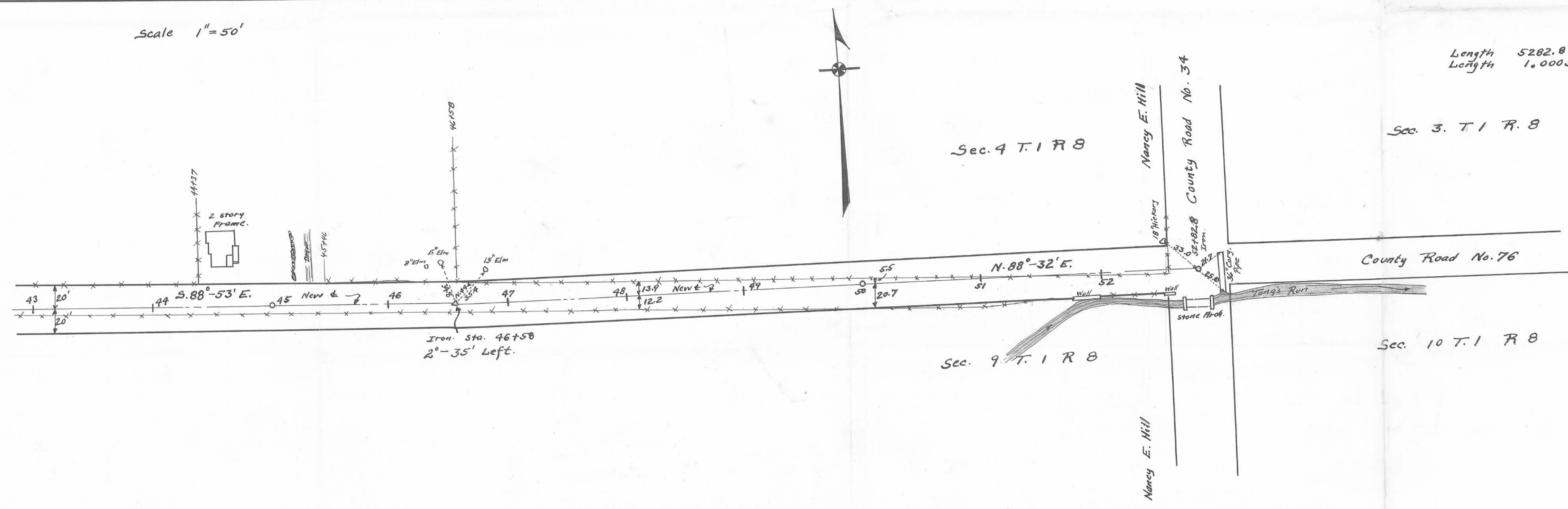
Book 552





Scale 1" = 50'

Length 5282.8 Feet
Length 1.0005 Miles



Book 552
Survey By W. H. W. W. W.
Nov. 1931.