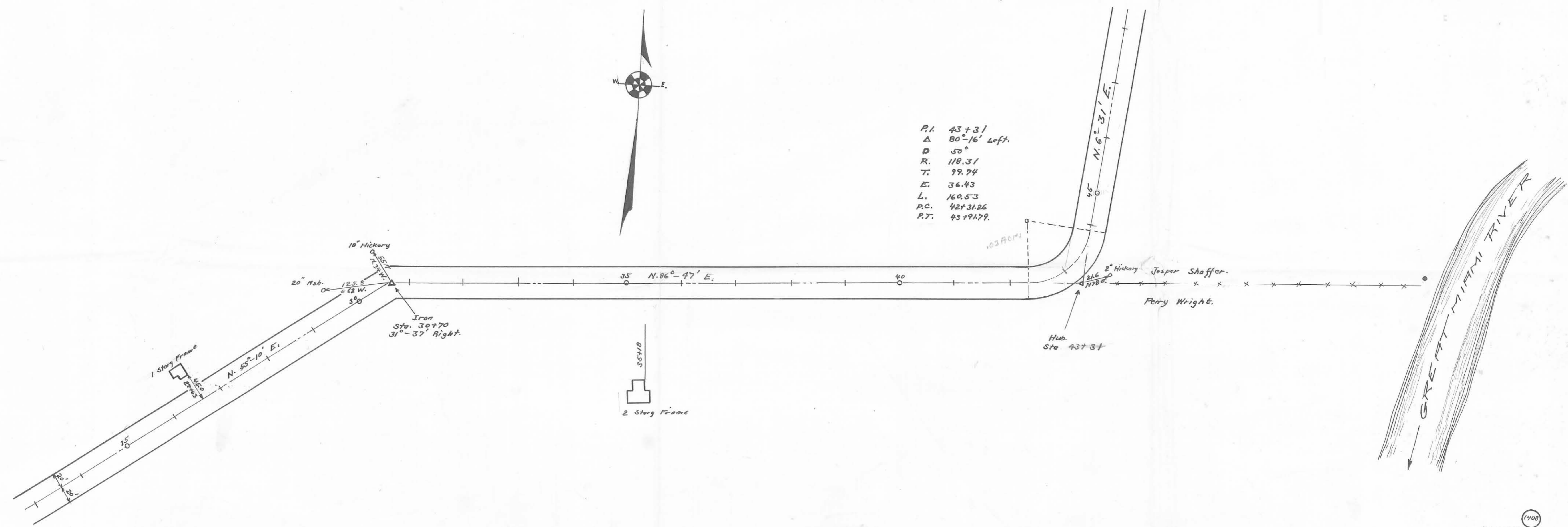
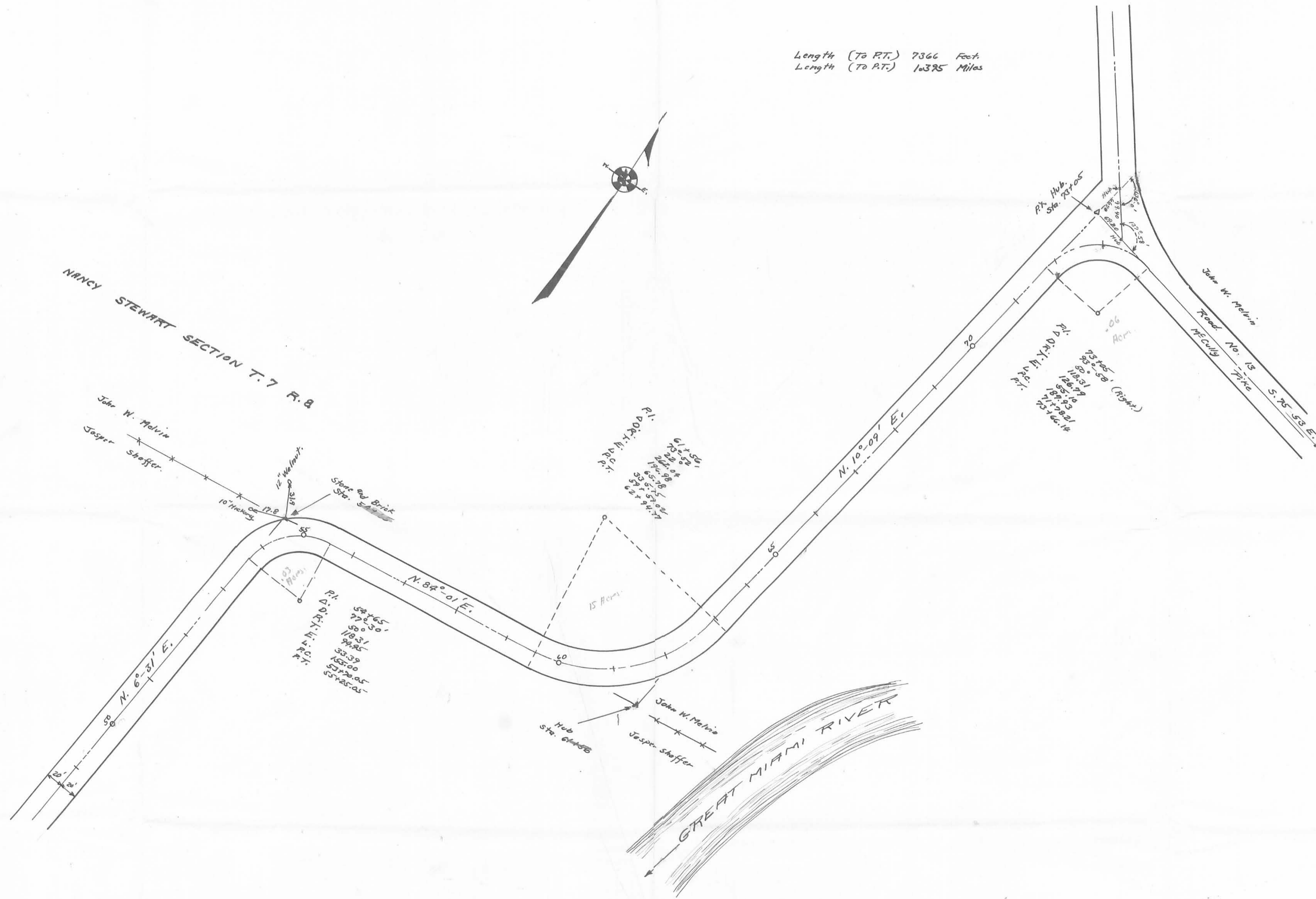
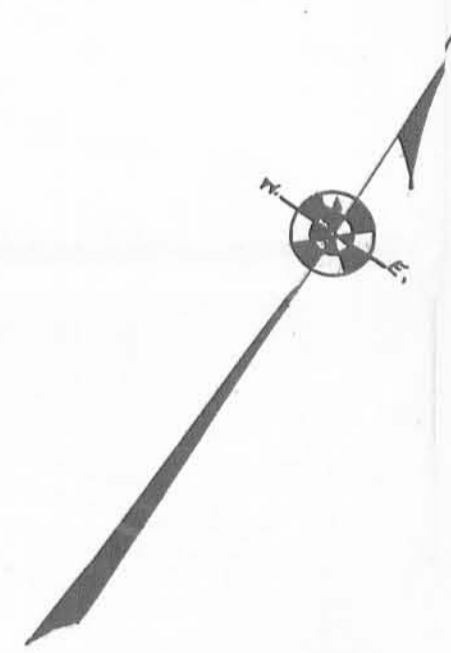


Field Notes in Logan County  
 Surveyor's Book 557 Pages 49 to 52  
 Road width 60 feet. Sec. Commissioners  
 Journal Vol. 4, Page 160 (1885)  
 Staked 40' to 50' shown.



Length (To P.T.) 7366 Feet  
Length (To P.T.) 16395 Miles



Field Notes in Logan County Surveyors' Book No. 507 Pages 47 to 57

Drawn by  
E. H. [Signature]