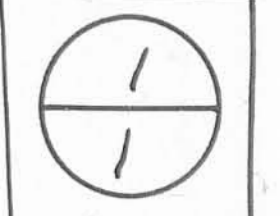
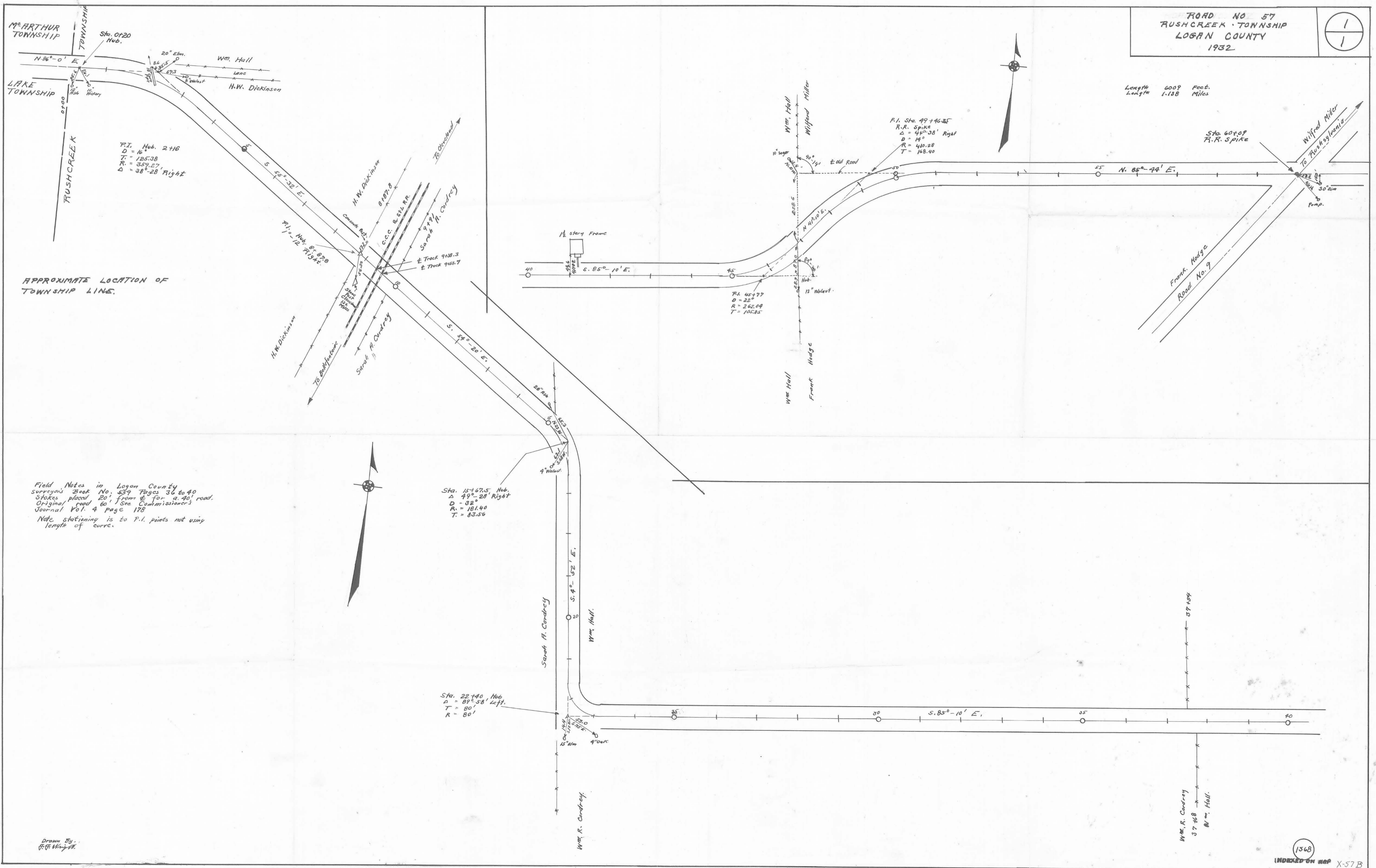


ROAD NO 57
RUSHCREEK TOWNSHIP
LOGAN COUNTY
1932



Length 6009 Feet.
Length 1.138 Miles



APPROXIMATE LOCATION OF TOWNSHIP LINE.

Field Notes in Logan County
Surveyors Book No. 539 Pages 36 to 40
Stakes placed 20' from E for a 40' road.
Original road 60'. See Commissioner's
Journal Vol. 4 Page 178
Note stationing is to P.I. points not using
length of curve.

Sta. 15+67.5 Hub.
 $\Delta = 49^{\circ}-28'$ Right
 $D = 32^{\circ}$
 $R = 161.40$
 $T = 83.56$

Sta. 22+40 Hub.
 $\Delta = 89^{\circ}-58'$ Left
 $T = 80'$
 $R = 80'$

P.I. Sta. 49+46.25
R.R. Spike
 $\Delta = 46^{\circ}-36'$ Right
 $D = 19^{\circ}$
 $R = 410.28$
 $T = 168.40$

P.I. 45+77
 $D = 28^{\circ}$
 $R = 262.09$
 $T = 105.85$

Drawn By
F. F. Wright