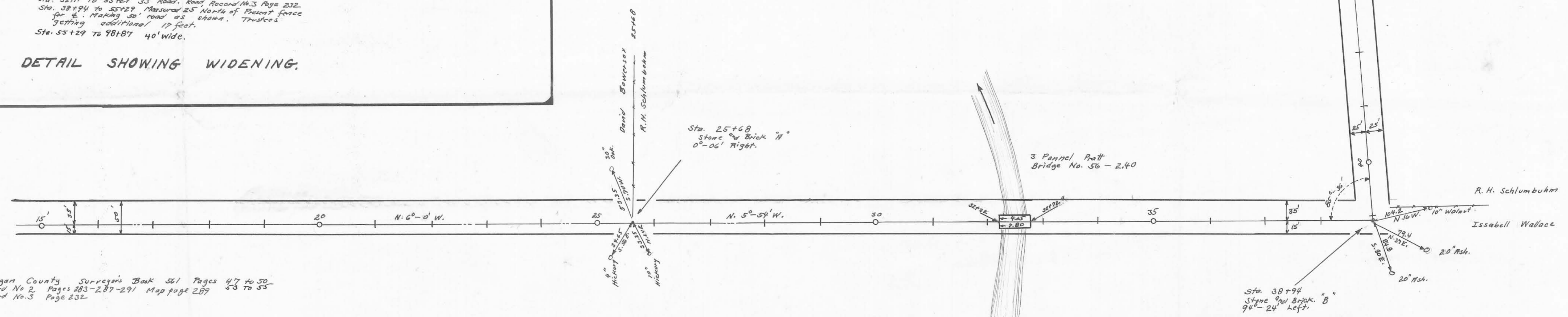


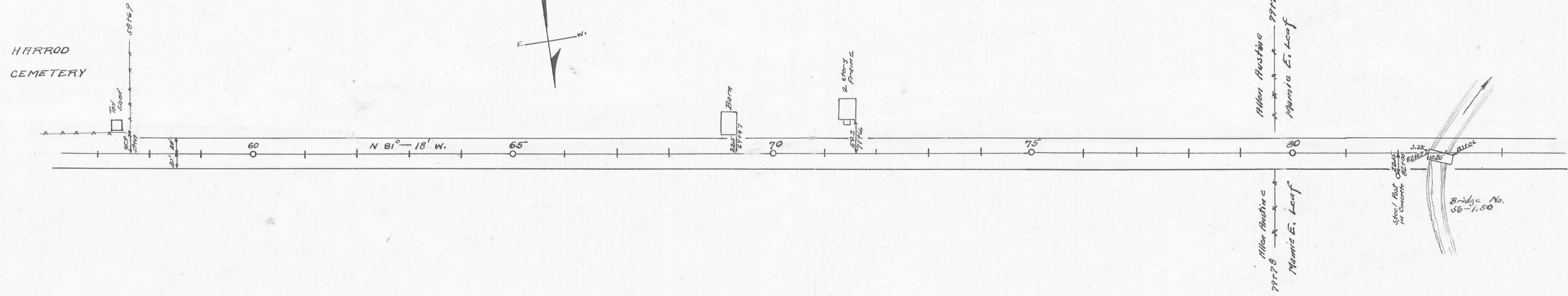
Original 30' road was all off of Wallace land.
 20' Widening 1933 from Bowersox and Schlumbohm land.
 Trustees getting additional land.
 Sta. 32+11 to 55+29 33' Road, Road Record No. 3 Page 232.
 Sta. 38+94 to 55+29 Measured 25' North of Present fence
 for 2' widening 30' road as shown. Trustees
 getting additional 17 feet.
 Sta. 55+29 to 98+87 40' wide.

DETAIL SHOWING WIDENING.

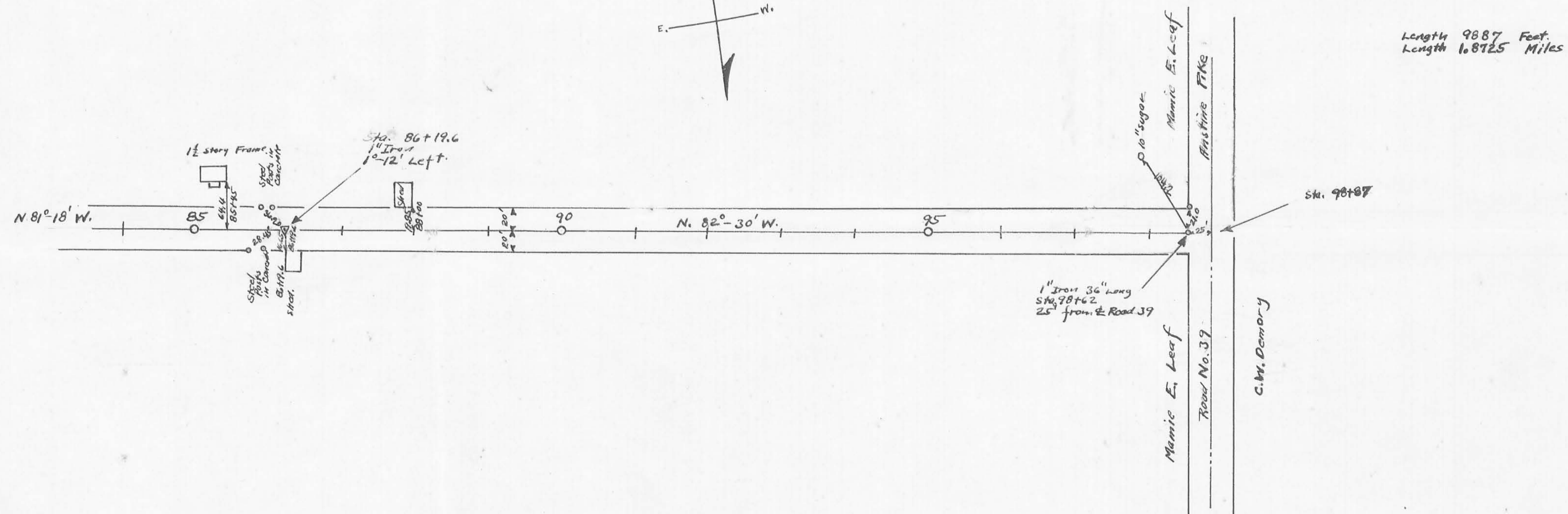


Survey Notes in Logan County Surveyor's Book 561 Pages 47 to 50
 30' Road Road Record No. 2 Pages 283-287-291 Map page 289 53 to 55
 33' Road Road Record No. 3 Page 232

Drawn by
 C. H. V. Long



Field Notes Book 561.



1133

1442

INDEXED ON MAP