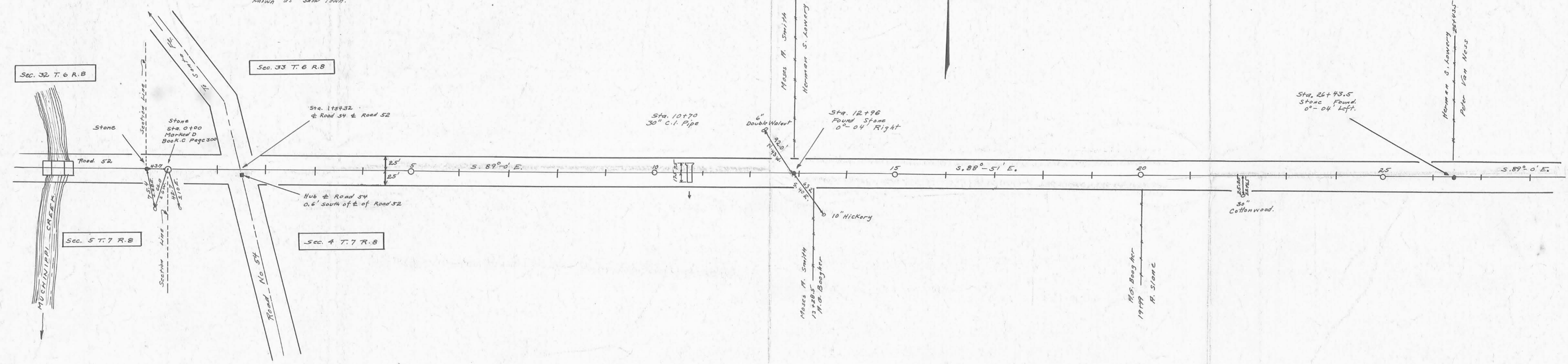


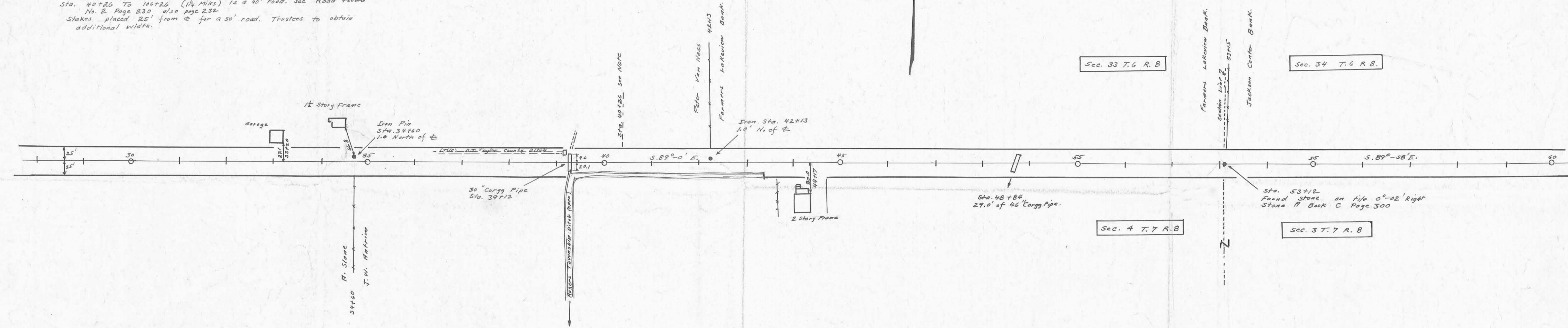
This cross-roads was formerly known as Shaw Town.



For road 52 West of Road 54 see Book 576 Pages 53 to 54 also map with road 52.

Note 1-

Field Notes Logan County Surveyors Book 573 Pages 55 to 60 Sta. 1154 to 40926 No Record Found Mr. Moses Smith says this was a 36' road. Sta. 40+26 to 106726 (1 1/4 Miles) is a 40' road. See Road record No. 2 Page 230 also page 232 Stakes placed 25' from center for a 50' road. Trustees to obtain additional width.

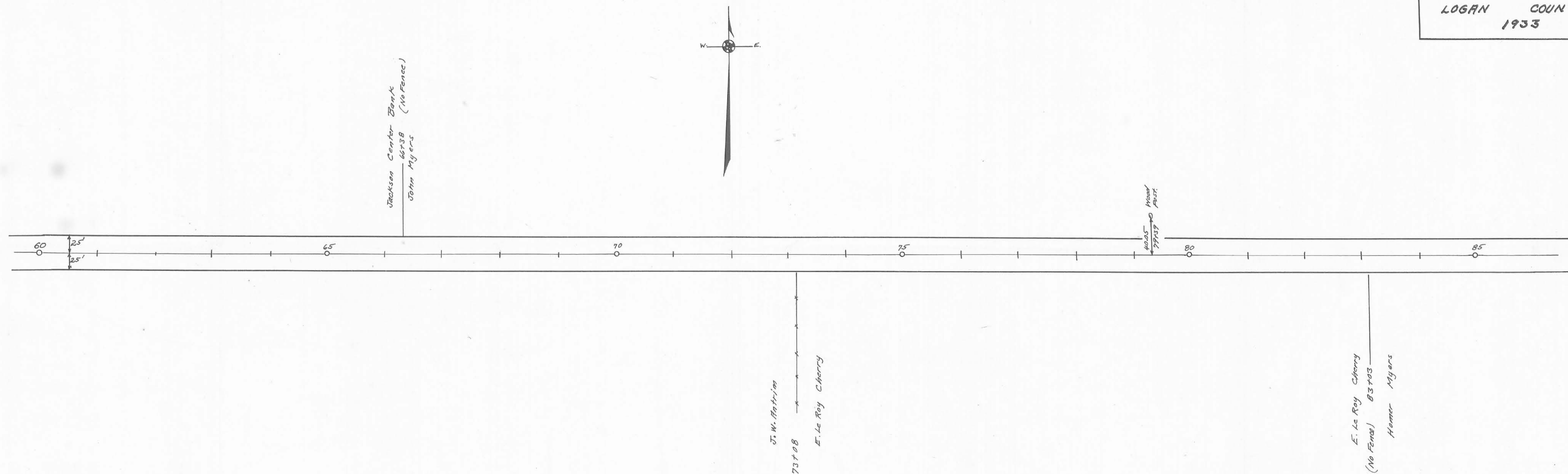


Drawn by
R. C. King

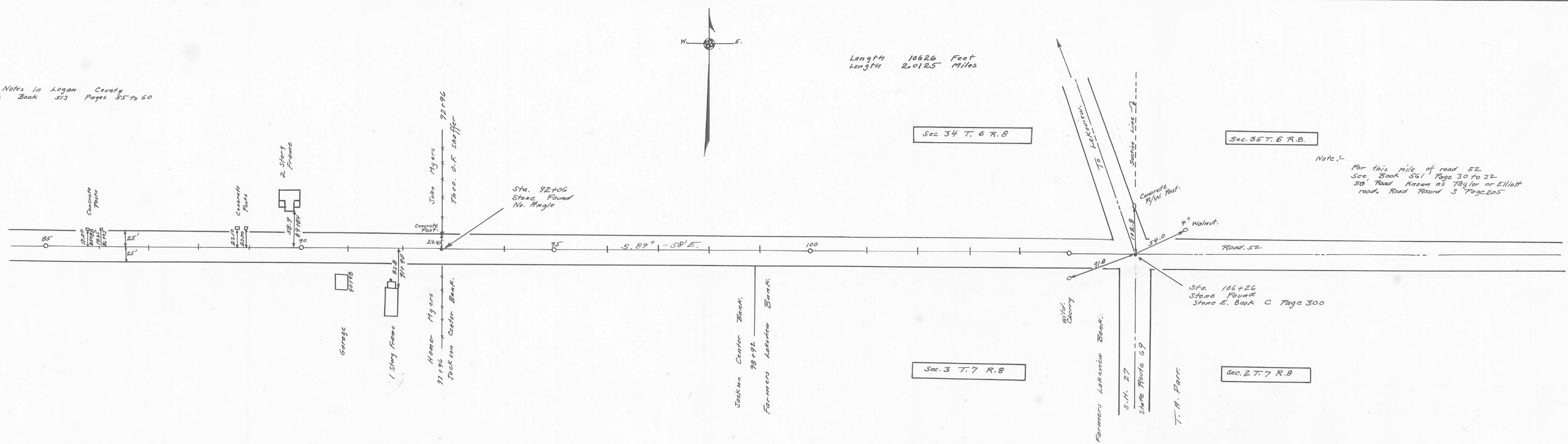
ROAD 52

X-52

X



Survey Notes in Logan County
 Surveyors Book 513 Pages 55 to 60



Note:-
 For this mile of road 52
 See Book 561 Page 30 to 32
 50' Road known as Taylor or Elliott
 road. Road Record 3 Page 205

Drawn By
 F. W. Myers

INDEXED ON MAP