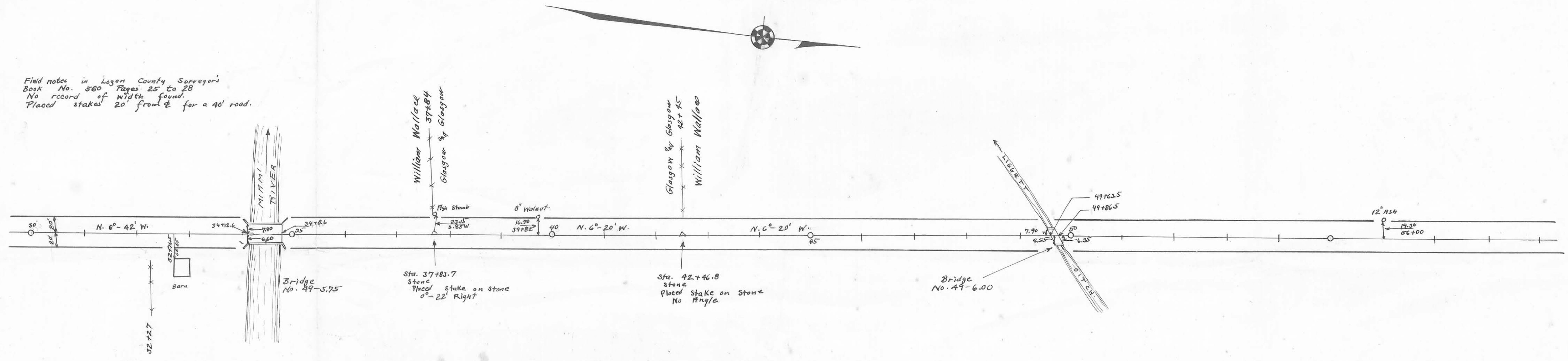
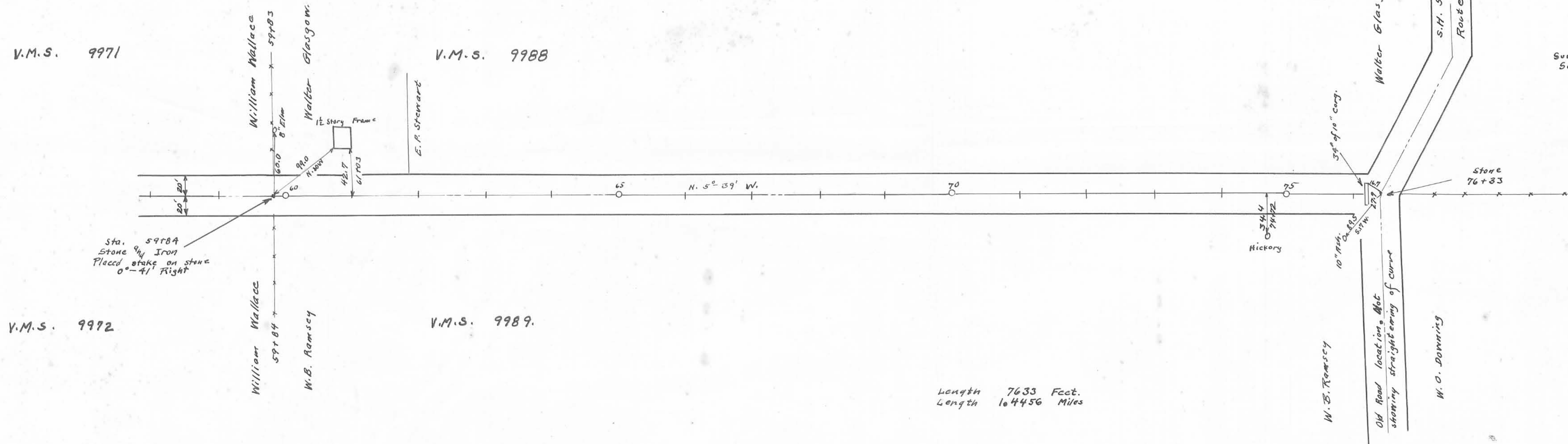


Field notes in Logan County Surveyor's  
 Book No. 560 Pages 25 to 28  
 No record of width found.  
 Placed stakes 20' from E for a 40' road.



Drawn by  
 G. W. H. 1902



Survey of road No. 593 is in Book 577  
See Plan 4.13 for map.

Length 7633 Feet.  
Length 164456 Miles

Book 500

Drawn By  
C. W. King

(37)  
INDEXED ON MAP

X-49