



1875
Road Record 2, page 159.
40' Right of Way.

ROAD NO. 47

COUNTY

CHAMPAIGN
LOGAN

Hazel G. Clem
62.94 A.

Robert E. Heinlen et ux
97.23 A.

William M. Piatt et al
39.50 A.

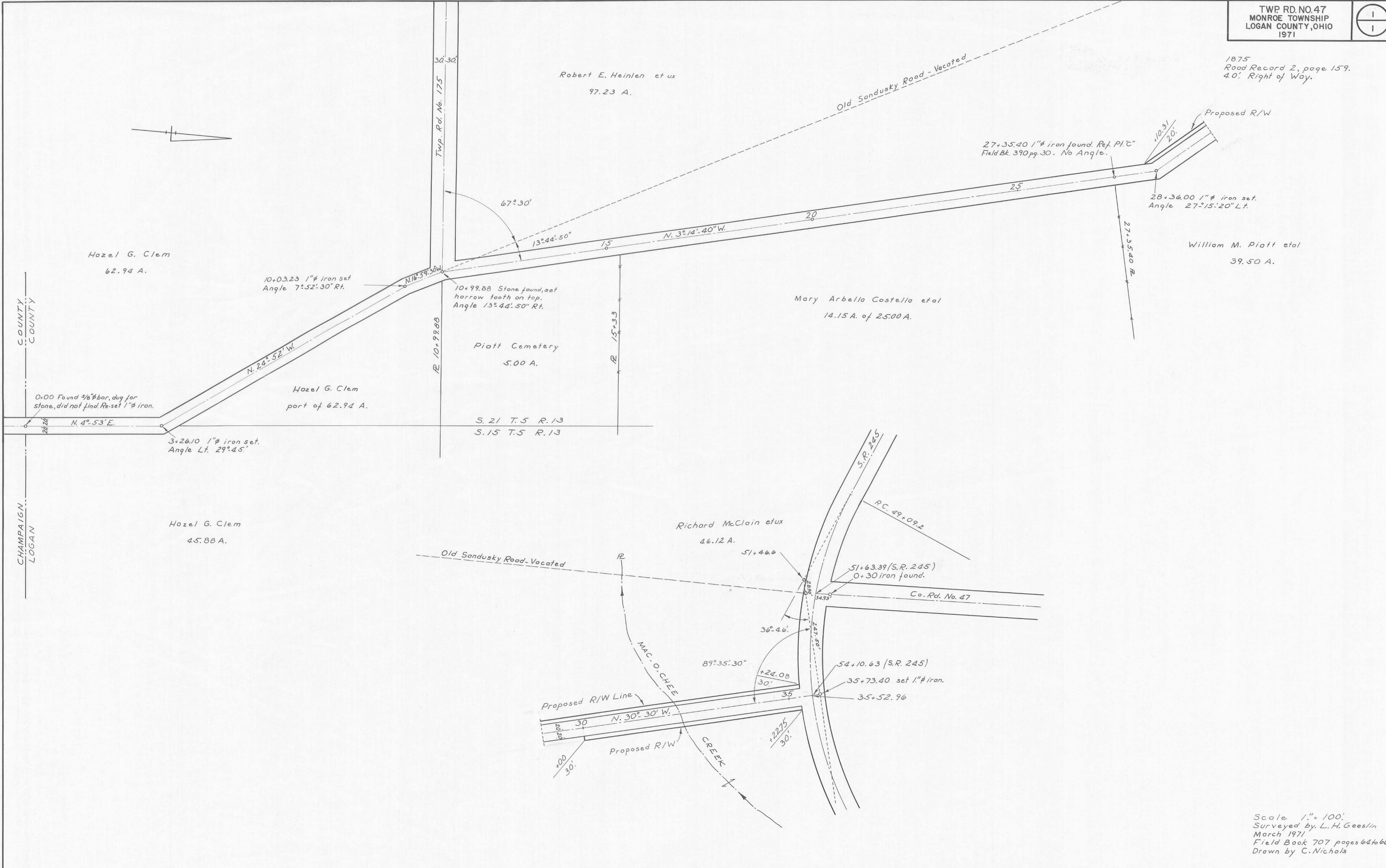
Mary Arbella Costella et al
14.15 A. of 25.00 A.

Piatt Cemetery
5.00 A.

Hazel G. Clem
45.88 A.

Richard McClain et ux
46.12 A.

S. 21 T. 5 R. 13
S. 15 T. 5 R. 13



Scale 1" = 100'
Surveyed by L. H. Geeslin
March 1971
Field Book 707 pages 64 to 66.
Drawn by C. Nichols