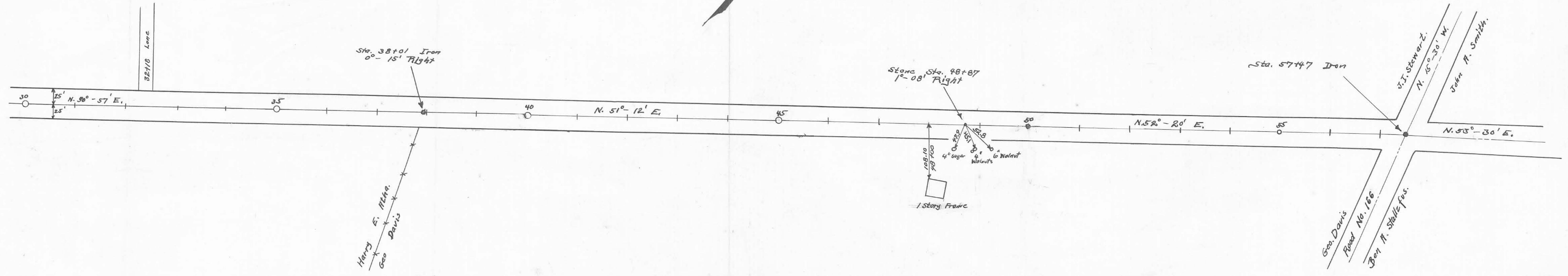


Survey Notes in Logan County Surveyor's
 Book No. 557 Pages 11 to 15
 60' Road 1841
 See Commissioners Journal Vol. 6 Pages 280 to 294
 Stakes placed 25' from E for a 50' road.

Length 5747 Feet
 Length 1.09 Miles



Drawn By
 B. B. ...