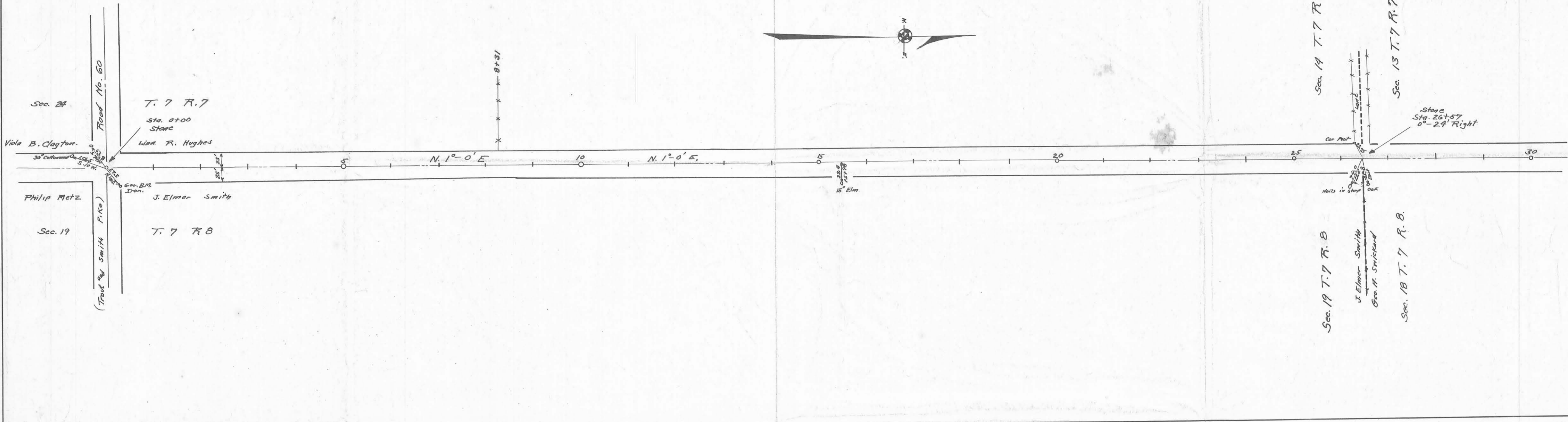
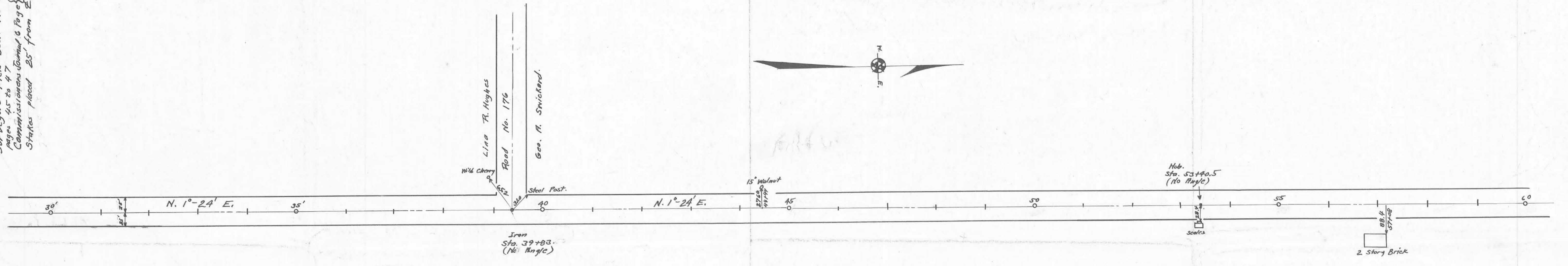


ROAD 23



Field Notes in Logan County
 Surveyors Field Book No 557
 pages 45 to 47
 Commissioners (Smith & Poy) set
 stakes placed 25' from E

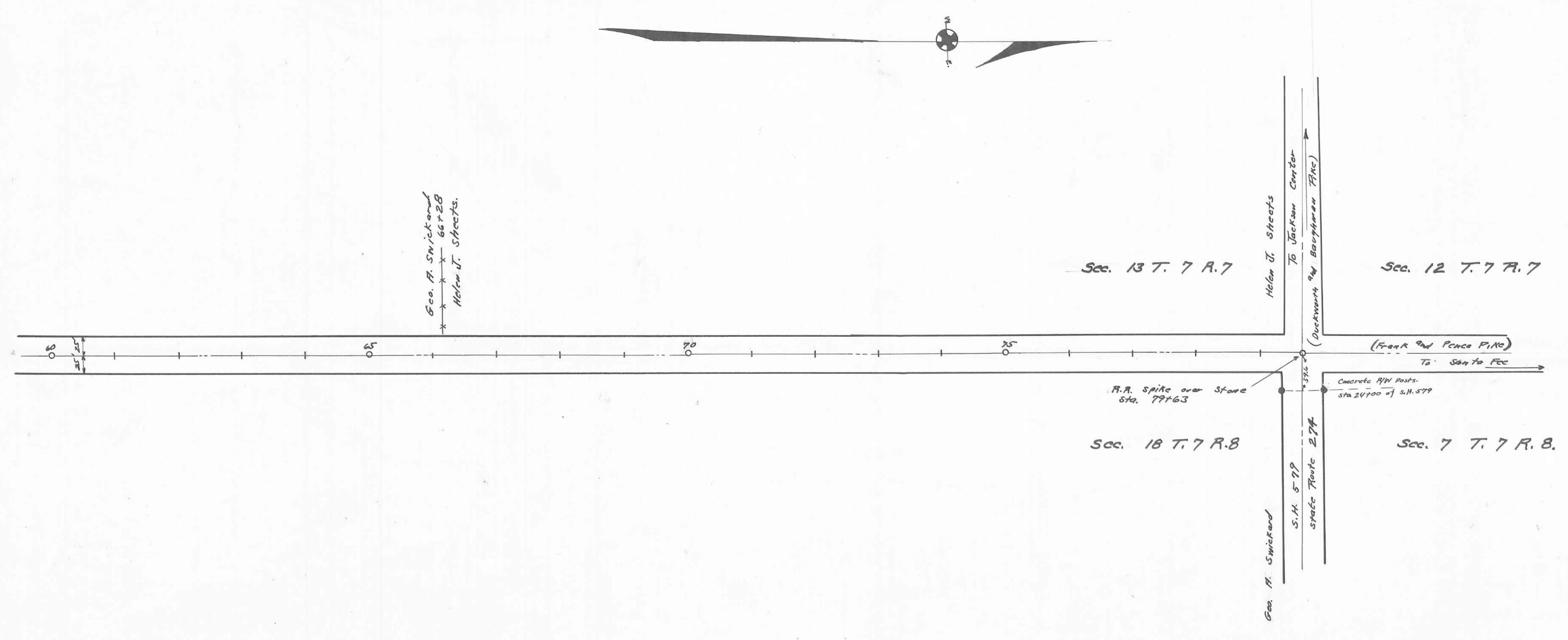


Drawn By
 G. W. King

X-23A

X-23

Length 7963 Feet
Length 1.5081 Miles



Field notes in Logan County
Surveyors Book No. 557 Pages
45 to 48

Drawn by
G. A. Swickard