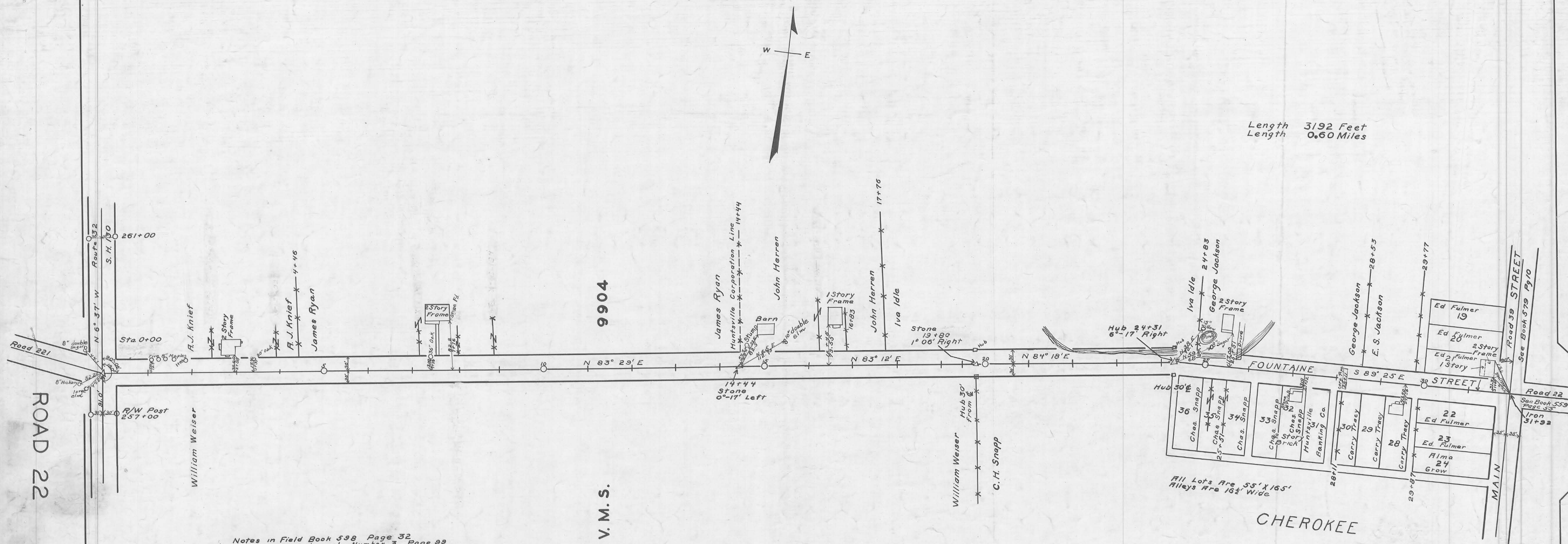


S.R. 274

Length 3192 Feet
 Length 0.60 Miles



9904

V. M. S.

Notes in Field Book 598 Page 32
 60' Commissioners Journal Number 3 Page 99
 Logan County (1832)

Commissioners View June 22, 1936
 Commissioners Hearing June 29, 1936
 Commissioners Hearing on Damages July 23, 1936

All Lots Are 55' X 165'
 Alleys Are 16 1/2' Wide

ROAD 22

X-22 A

Surveyed by F. F. Wright 1936
 Drawn by J. Montgomery 1936

1721
 INDEXED ON MAP



X-22 A