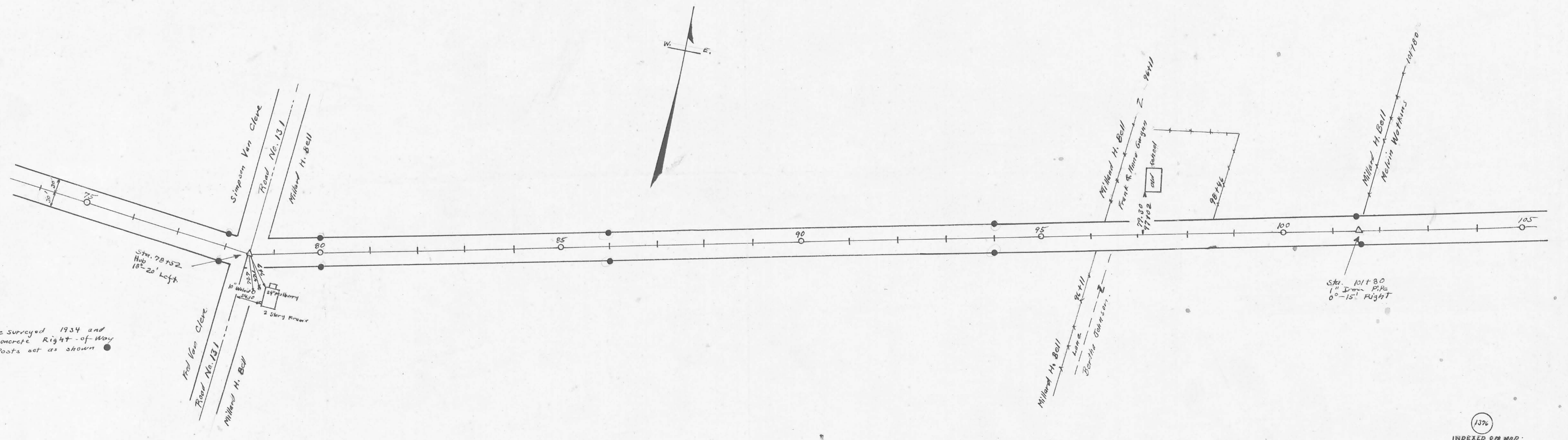
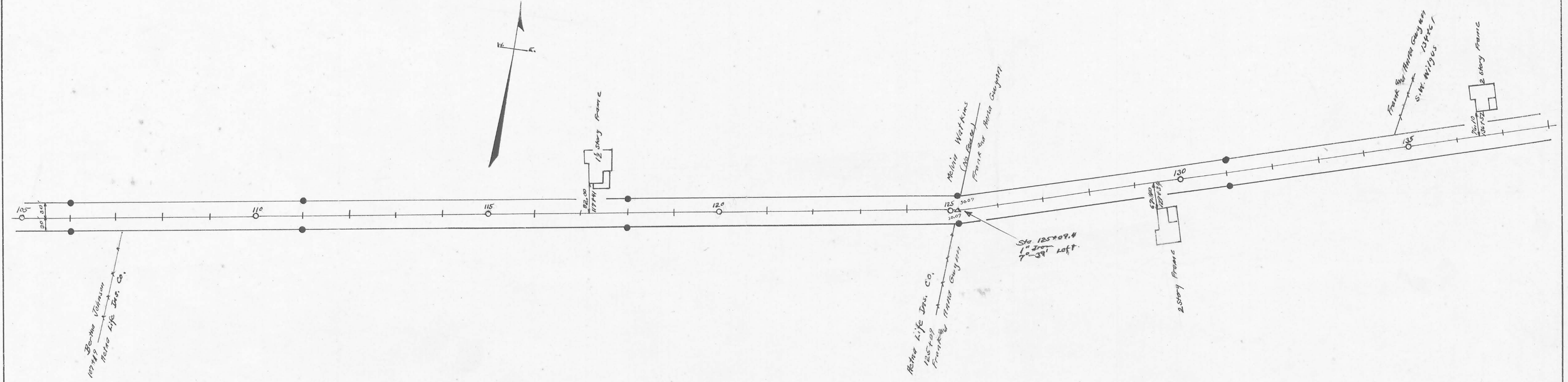


Field Notes Book 560

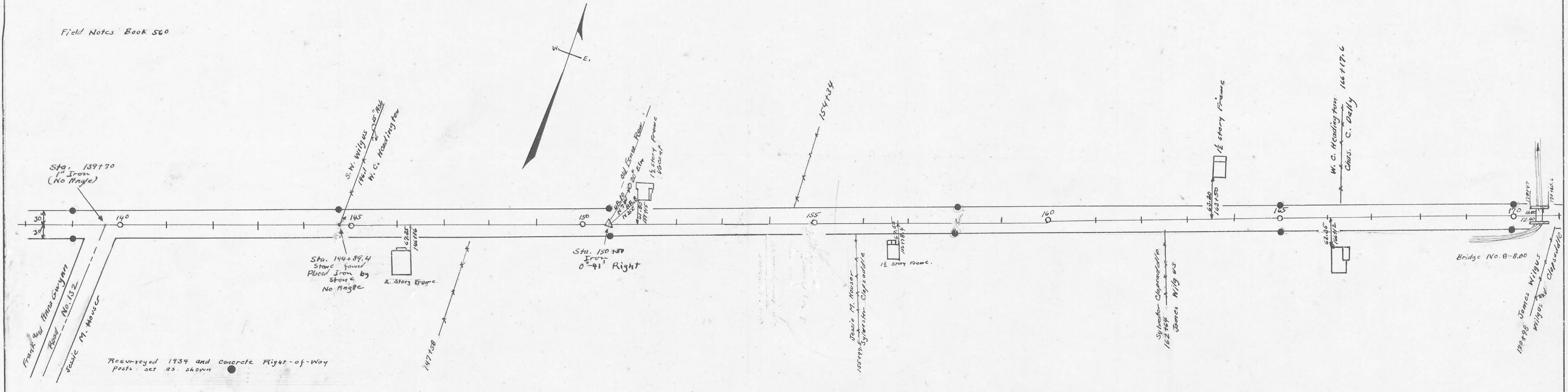


Re surveyed 1934 and
 concrete Right-of-Way
 Posts set as shown ●

1326
 INDEXED ON MAP

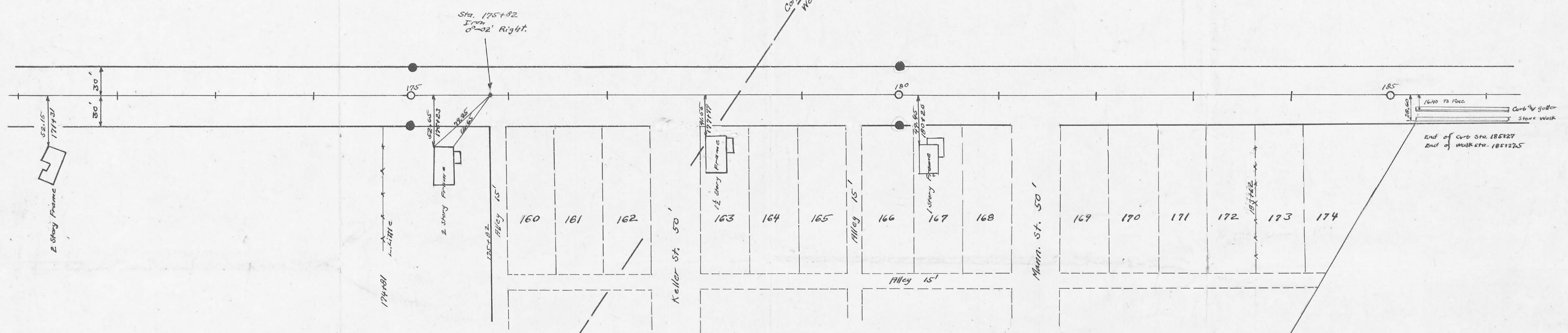
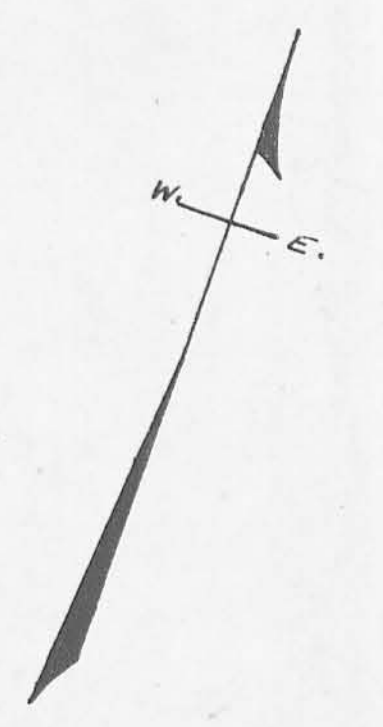


Field Notes Book 560



Length 185.27 Feet (To curb)
 Length 3.5090 Miles (To curb)
 Length 3.3778 Miles (To Corporation line)

Note this sheet 50' scale.



Field Notes Book 560
 Resurveyed 1934 and Right-
 of way Posts set as shown

HOMESTED ALLOTMENT TO WEST MANSFIELD
 Sec. Plan J-29
 Regular Lots 150' X 50'