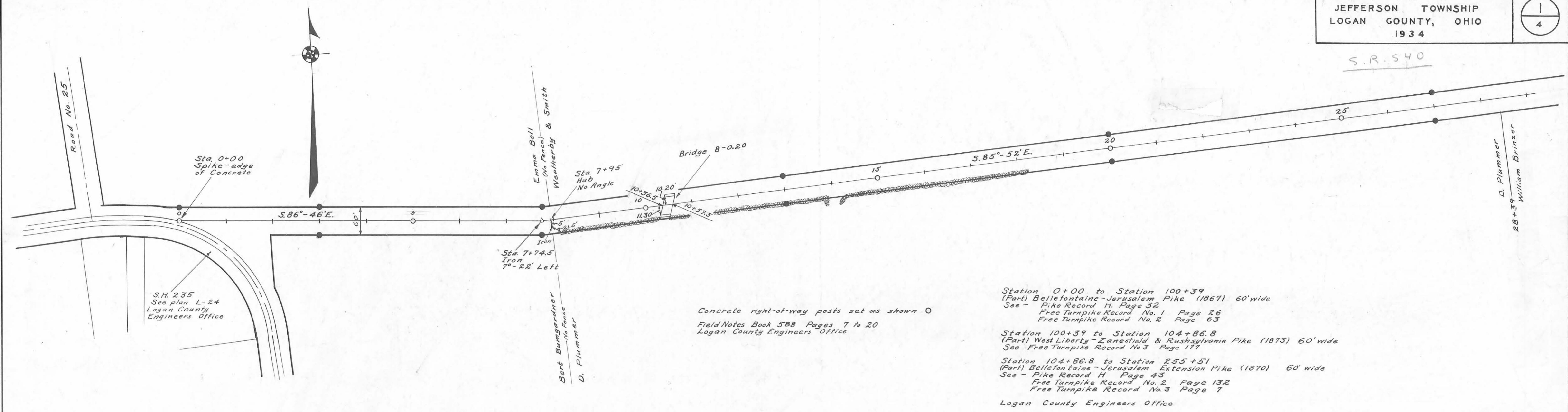


S.R. 540

ROAD 8



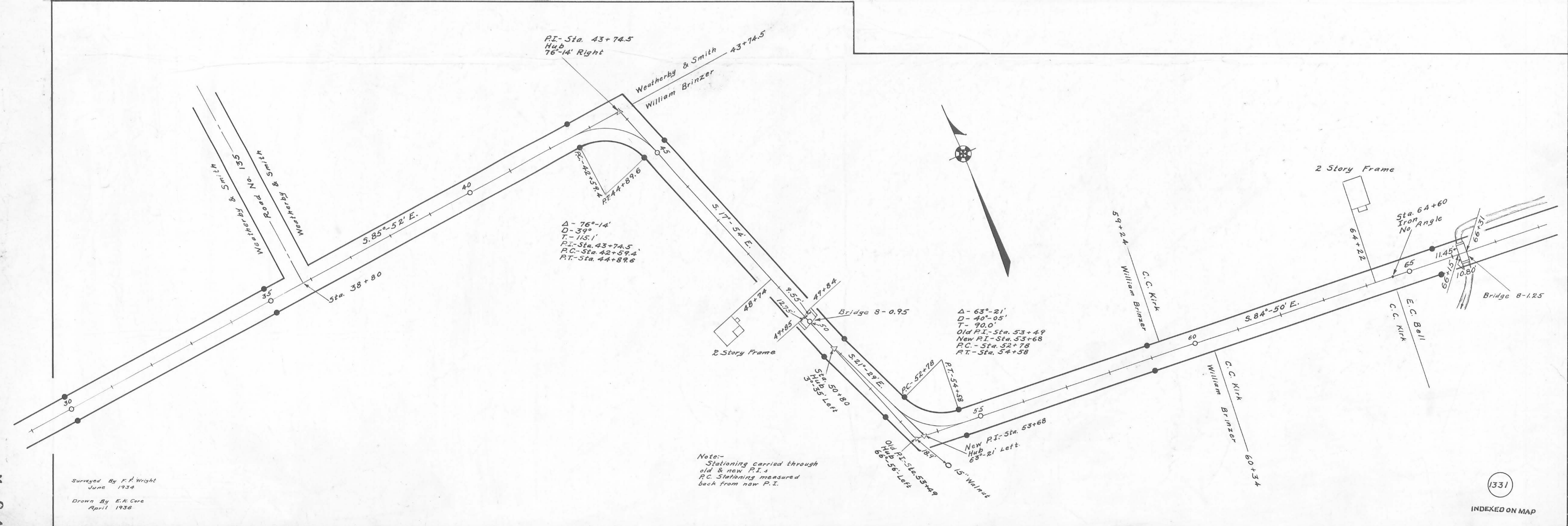
S.H. 235
See plan L-24
Logan County
Engineers Office

Concrete right-of-way posts set as shown \bigcirc
Field Notes Book 588 Pages 7 to 20
Logan County Engineers Office

Station 0+00 to Station 100+39
(Part) Bellefontaine-Jerusalem Pike (1867) 60' wide
See - Pike Record H. Page 32
Free Turnpike Record No. 1 Page 26
Free Turnpike Record No. 2 Page 63

Station 100+39 to Station 104+86.8
(Part) West Liberty-Zanesfield & Rushsylvania Pike (1873) 60' wide
See Free Turnpike Record No. 3 Page 177

Station 104+86.8 to Station 255+51
(Part) Bellefontaine-Jerusalem Extension Pike (1870) 60' wide
See - Pike Record H. Page 43
Free Turnpike Record No. 2 Page 132
Free Turnpike Record No. 3 Page 7
Logan County Engineers Office



P.I. - Sta. 43+74.5
Hub
76'-14" Right

$\Delta - 76^{\circ}-14'$
 $D - 39'$
 $T - 115.1'$
P.I. - Sta. 43+74.5
P.C. - Sta. 42+59.4
P.T. - Sta. 44+89.6

$\Delta - 63^{\circ}-21'$
 $D - 40'-05"$
 $T - 70.0'$
Old P.I. - Sta. 53+49
New P.I. - Sta. 53+68
P.C. - Sta. 52+78
P.T. - Sta. 54+58

Note:-
Stationing carried through
old & new P.I.s
P.C. Stationing measured
back from new P.I.

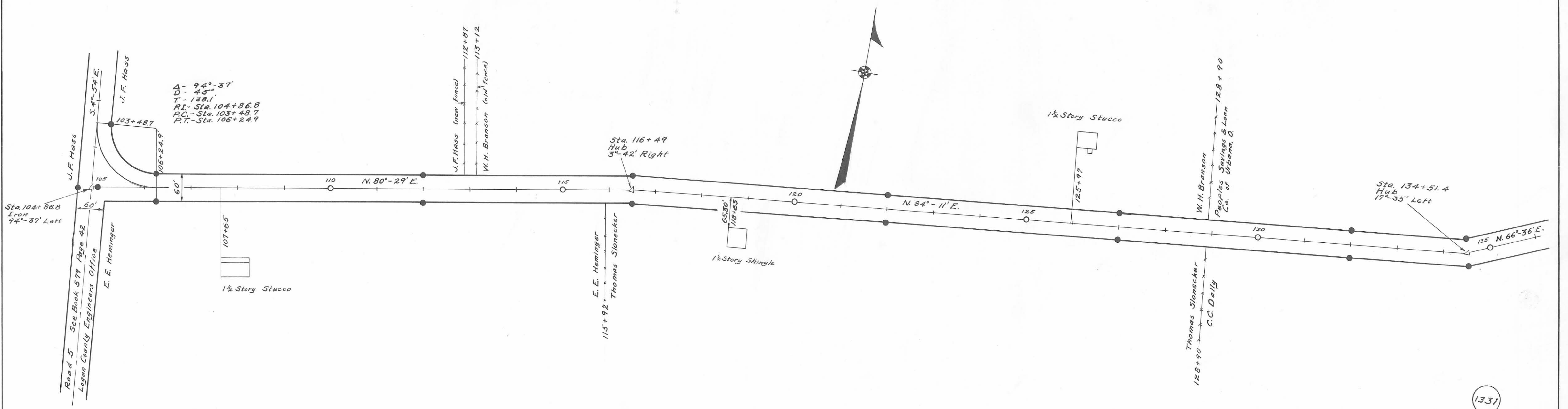
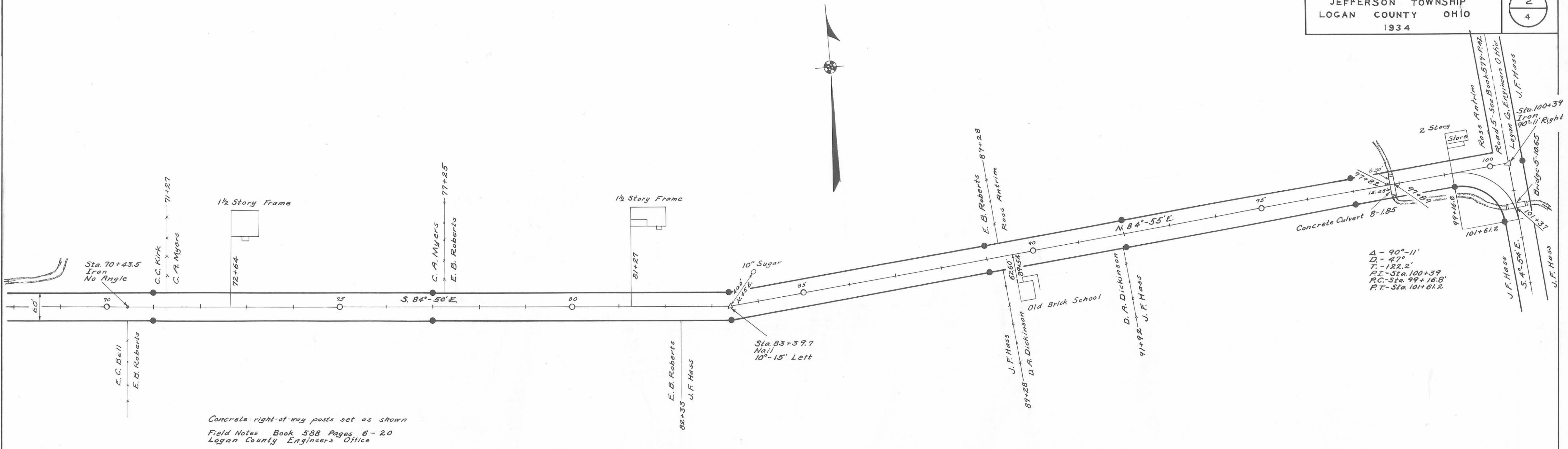
Surveyed By F. A. Wright
June 1934
Drawn By E. A. Caro
April 1936

1331

INDEXED ON MAP

X-8A

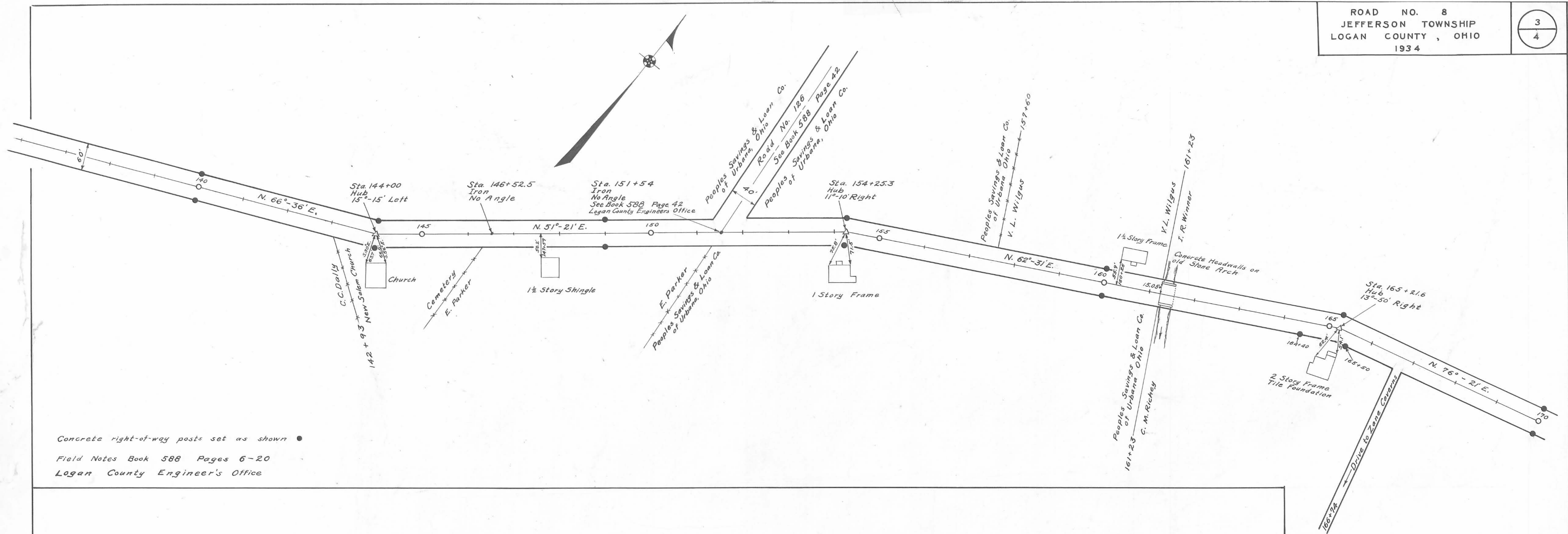
X-8A



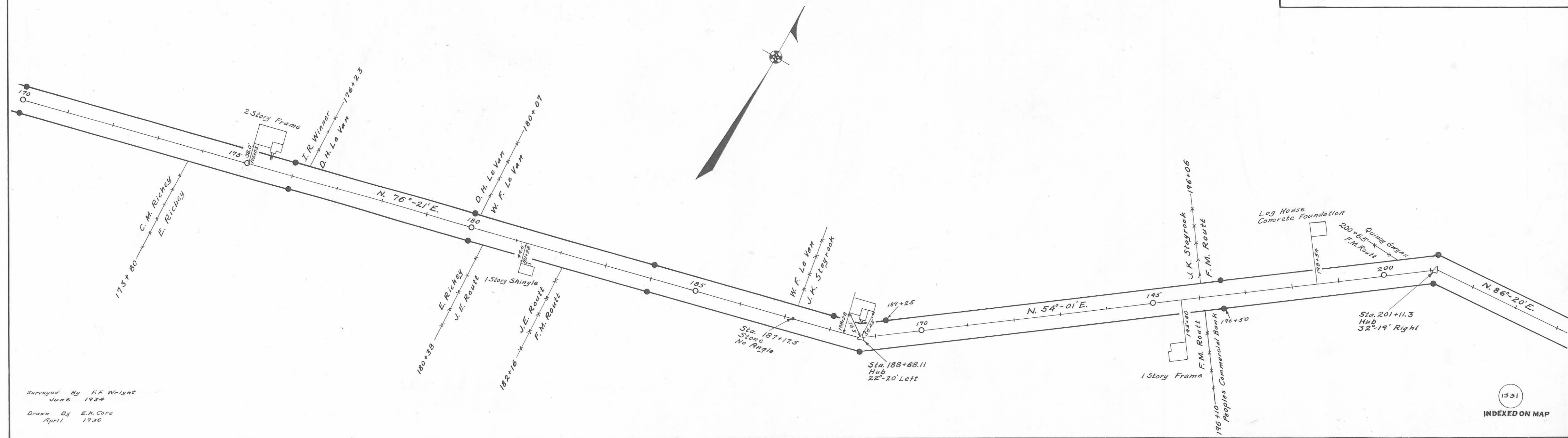
Surveyed By F.F. Wright
June 1934
Drawn By E.K. Carr
April 1936

INDEXED ON MAP

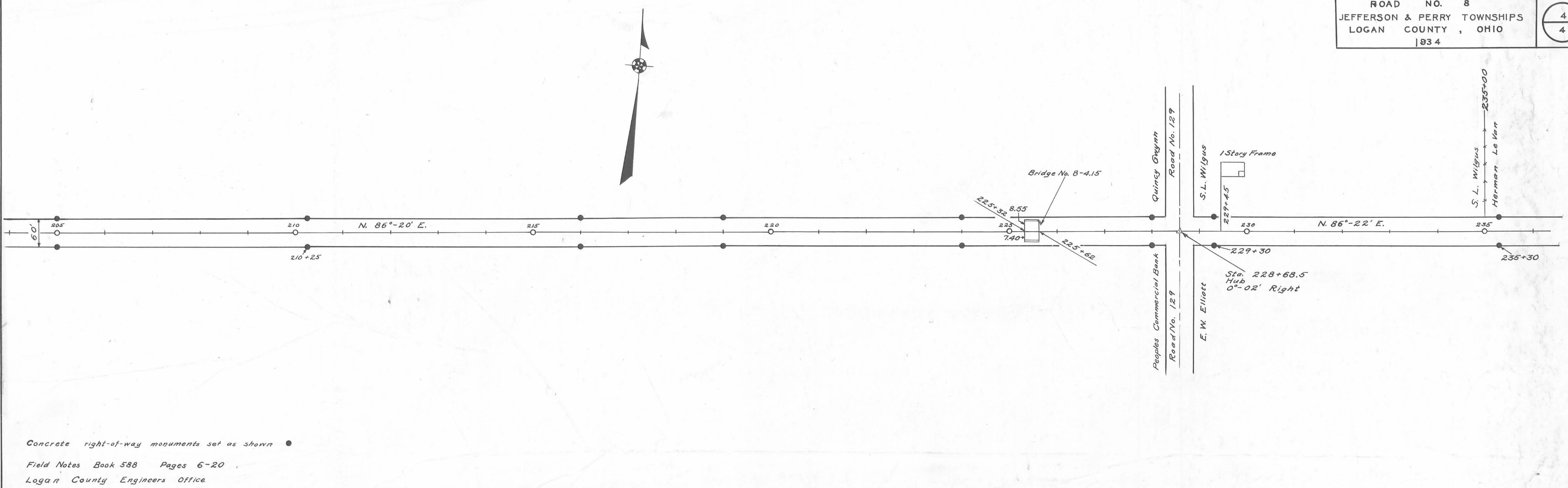
1331



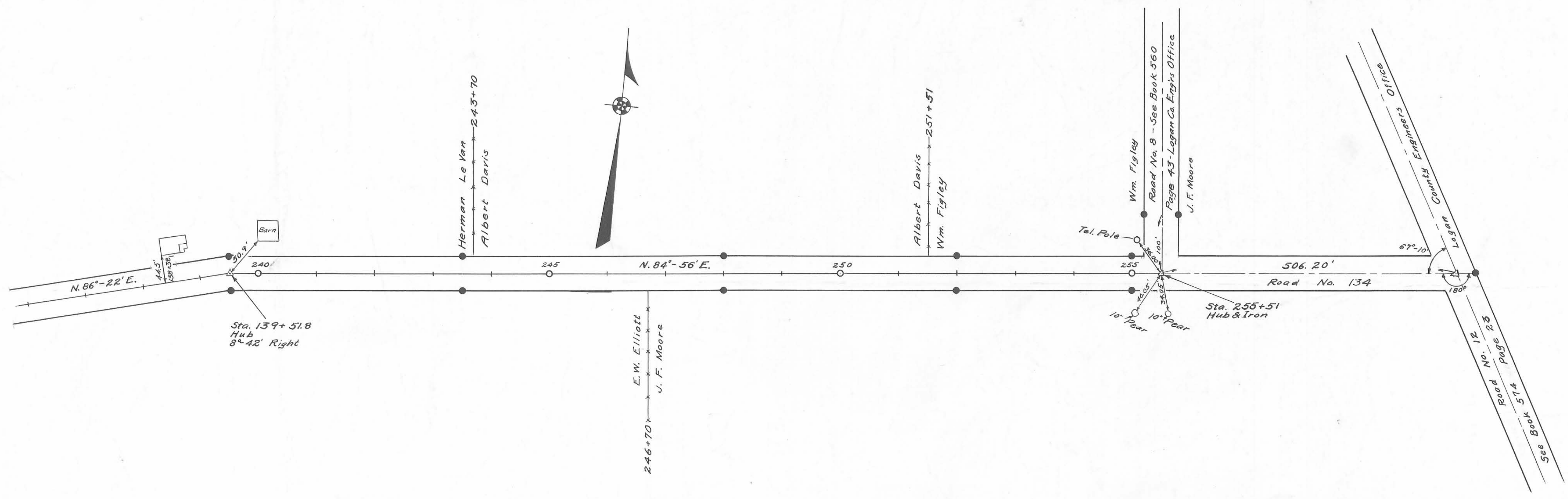
Concrete right-of-way posts set as shown ●
Field Notes Book 588 Pages 6-20
Logan County Engineer's Office



Surveyed By F.R. Wright
June 1934
Drawn By E.K. Core
April 1936



Concrete right-of-way monuments set as shown ●
 Field Notes Book 588 Pages 6-20
 Logan County Engineers Office



Surveyed By F.P. Wright
 June 1934
 Drawn By E.K. Core
 April 1936