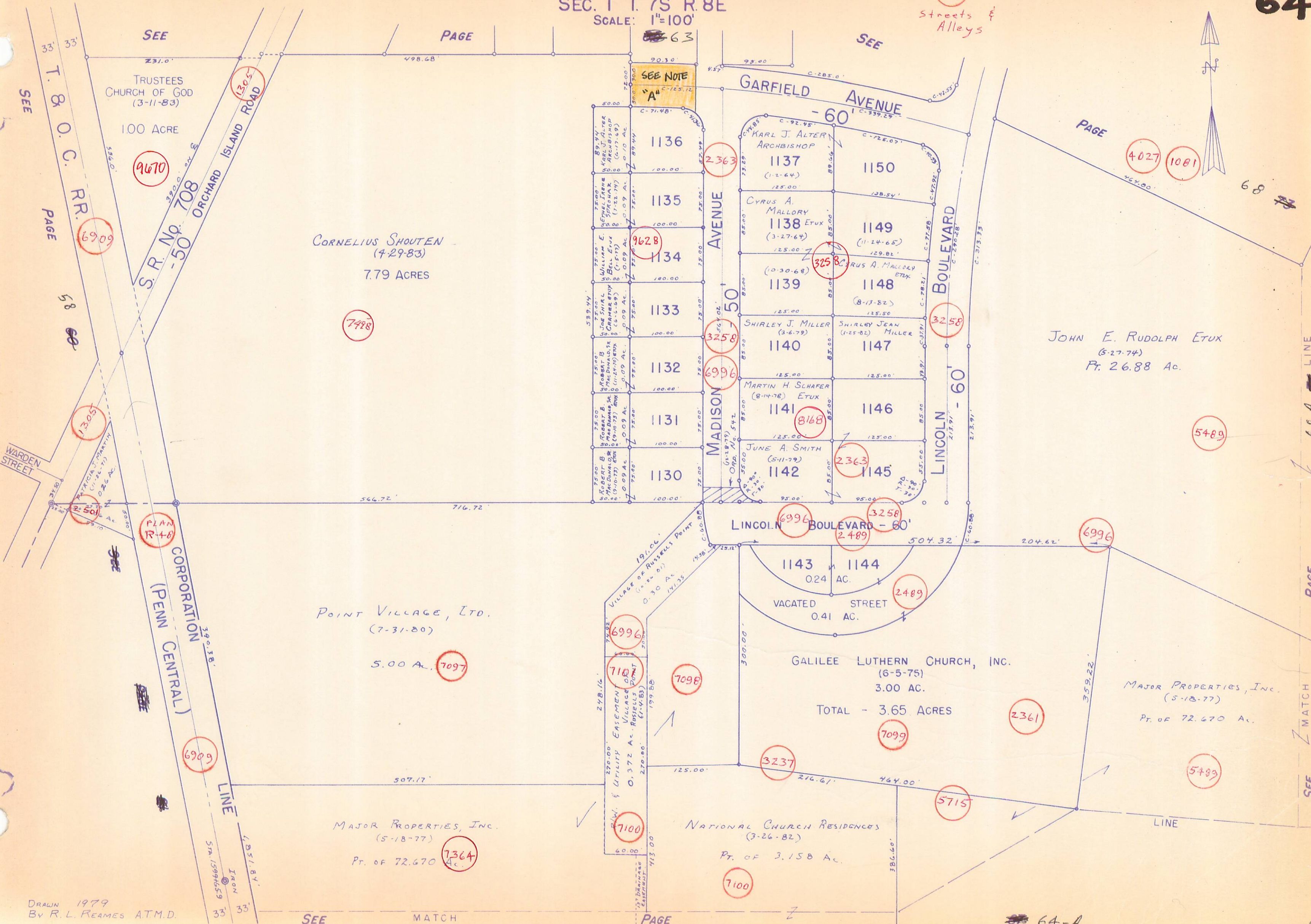


WASHINGTON TOWNSHIP RUSSELLS POINT CORPORATION SEC. 1 T. 7S R. 8E

NOTE "A": STREET VACATION, ORD. NO. 12-1065
OR VOL. 1065, PG. 70 (R-2363)

64

SCALE: 1"=100'



TRUSTEES
CHURCH OF GOD
(3-11-83)
100 ACRE

CORNELIUS SHOUTEN
(4-29-83)
7.79 ACRES

JOHN E. RUDOLPH ETUX
(6-27-74)
Pt. 26.88 Ac.

POINT VILLAGE, LTD.
(7-31-80)
5.00 AC.

GALILEE LUTHERN CHURCH, INC.
(6-5-75)
3.00 AC.
TOTAL - 3.65 ACRES

MAJOR PROPERTIES, INC.
(5-18-77)
Pt. OF 72.670 AC.

NATIONAL CHURCH RESIDENCES
(3-26-82)
Pt. OF 3.158 AC.

MAJOR PROPERTIES, INC.
(5-18-77)
Pt. OF 72.670 AC.

DRAWN 1979
By R. L. REAMES A.T.M.D.

64-A