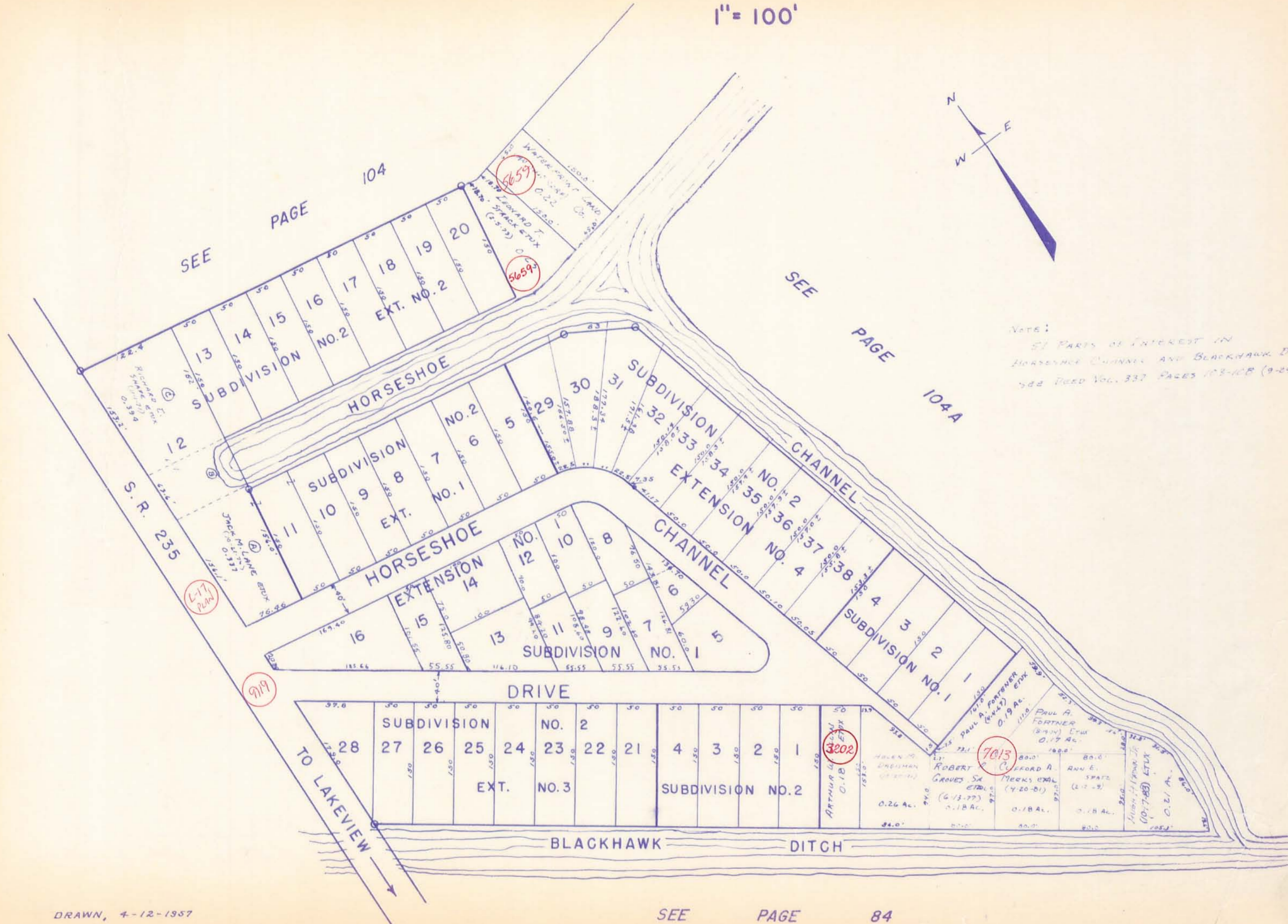
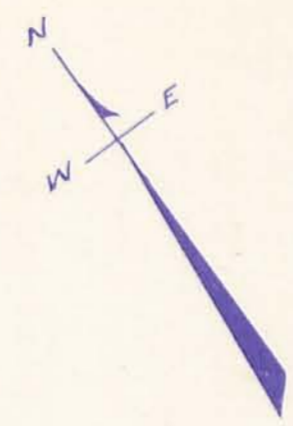


BYERS HORSESHOE CHANNEL SUBDIVISIONS 1 & 2  
SECTION 23, TOWN 6, RANGE 8

1" = 100'



NOTE:  
SEE PARTS OF INTEREST IN  
HORSESHOE CHANNEL AND BLACKHAWK DITCH.  
SEE RECD VOL. 337 PAGES 103-108 (9-24-71)

SEE PAGE 104

SEE PAGE 104A

SEE PAGE 84

DRAWN, 4-12-1957