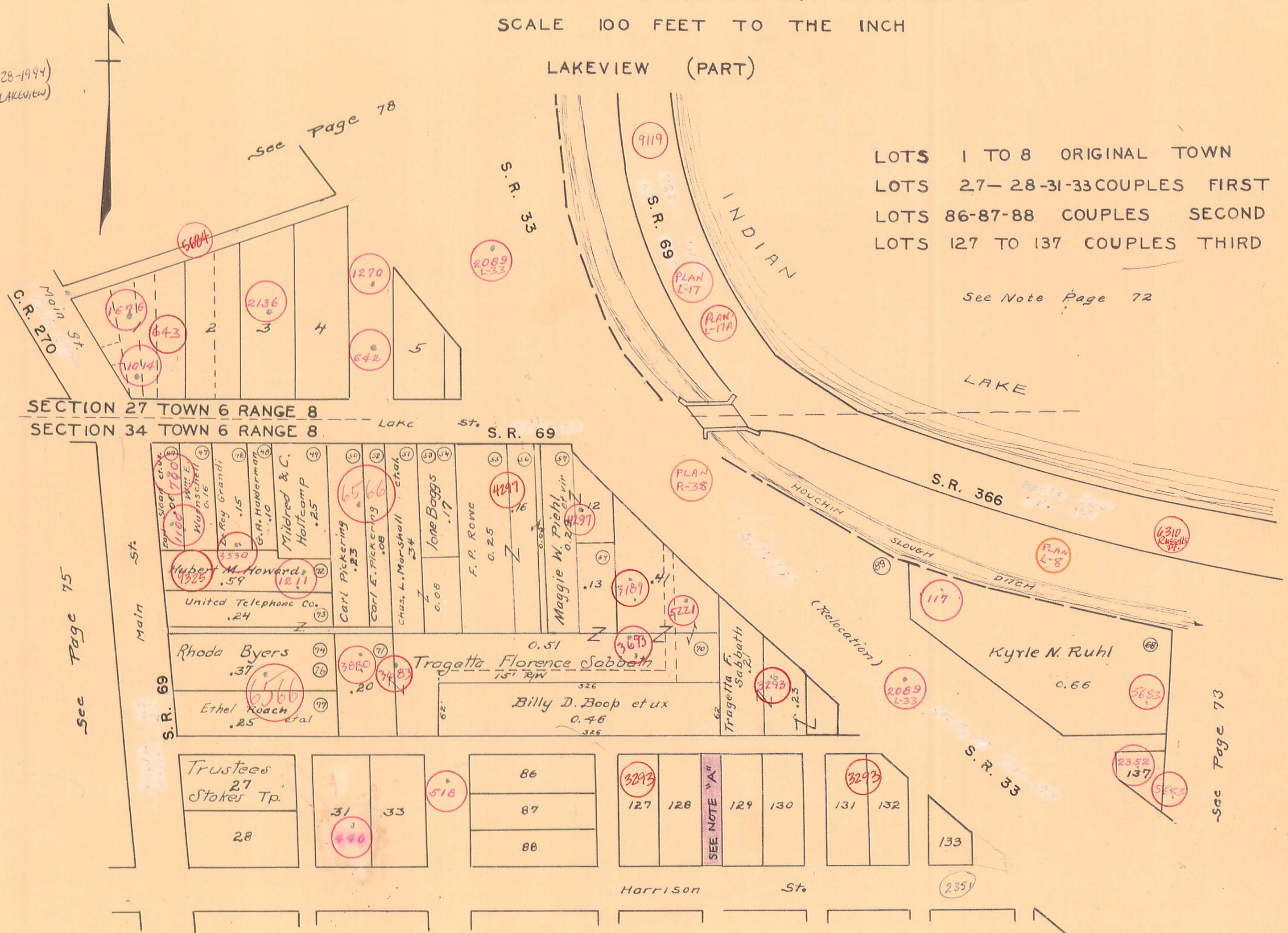


STOKES TOWNSHIP

SECTION 27 TOWN 6 S. RANGE 8 E.
SECTION 34 TOWN 6 S. RANGE 8 E.

SCALE 100 FEET TO THE INCH

NOTE 'A' - ALLEY VACATED (9-28-1994)
ORDINANCE # 1994-09-LAKEVIEW
SEE R-3293



LOTS 1 TO 8 ORIGINAL TOWN
LOTS 27-28-31-33 COUPLES FIRST
LOTS 86-87-88 COUPLES SECOND
LOTS 127 TO 137 COUPLES THIRD

See Note Page 72

See Page 75

See Page 73

See Page 73