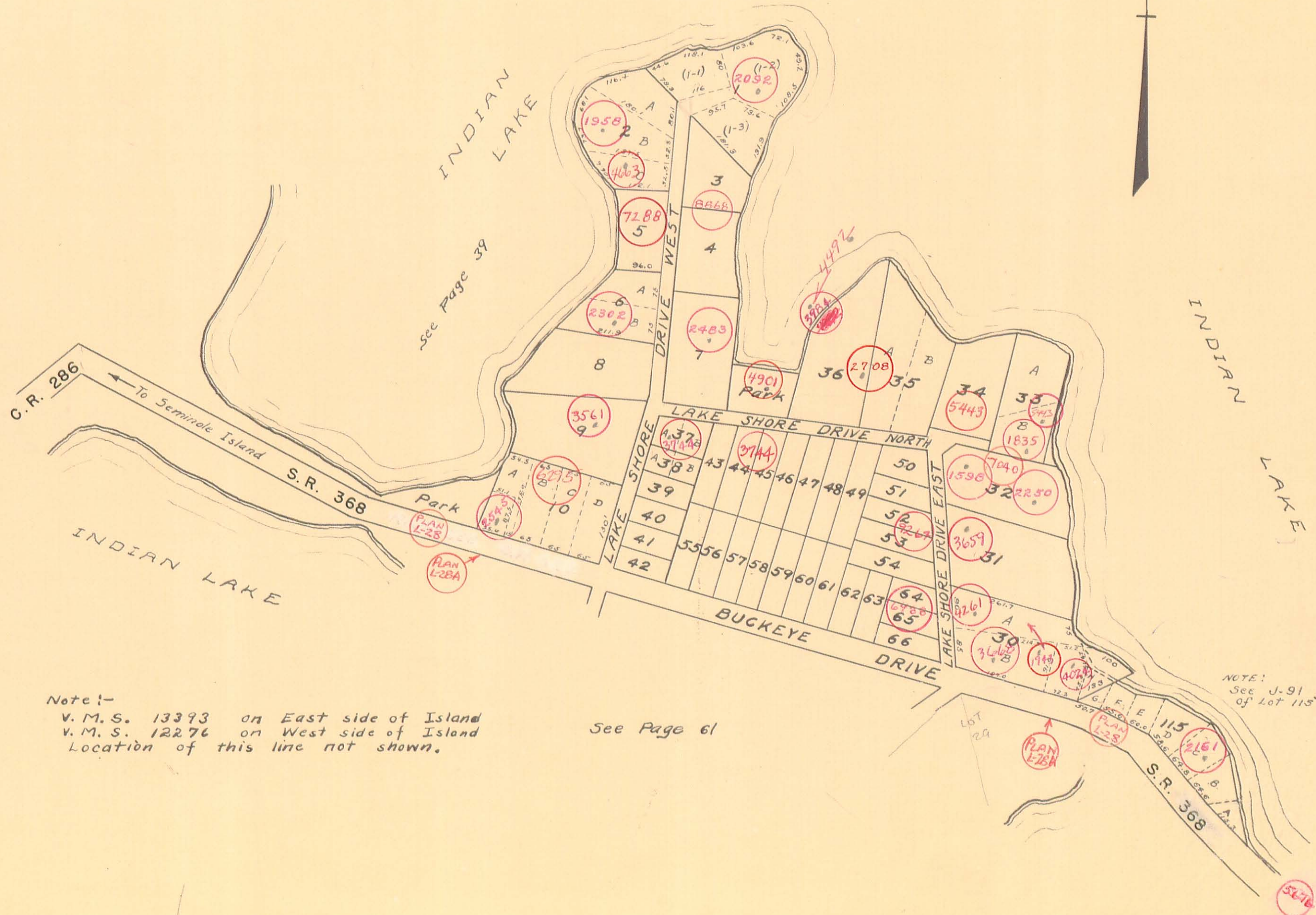


STOKES TOWNSHIP

VIRGINIA MILITARY SURVEY 12276
VIRGINIA MILITARY SURVEY 13393

SCALE 200 FEET TO THE INCH

SHAWNEE ISLAND (N. PART)



Note:-
 V. M. S. 13393 on East side of Island
 V. M. S. 12276 on West side of Island
 Location of this line not shown.

See Page 61

NOTE:
 See J-91 for survey
 of Lot 115