

RICHLAND TOWNSHIP

V. M. S. 13393

FERNWOOD SUBDIVISIONS - LONG ISLAND

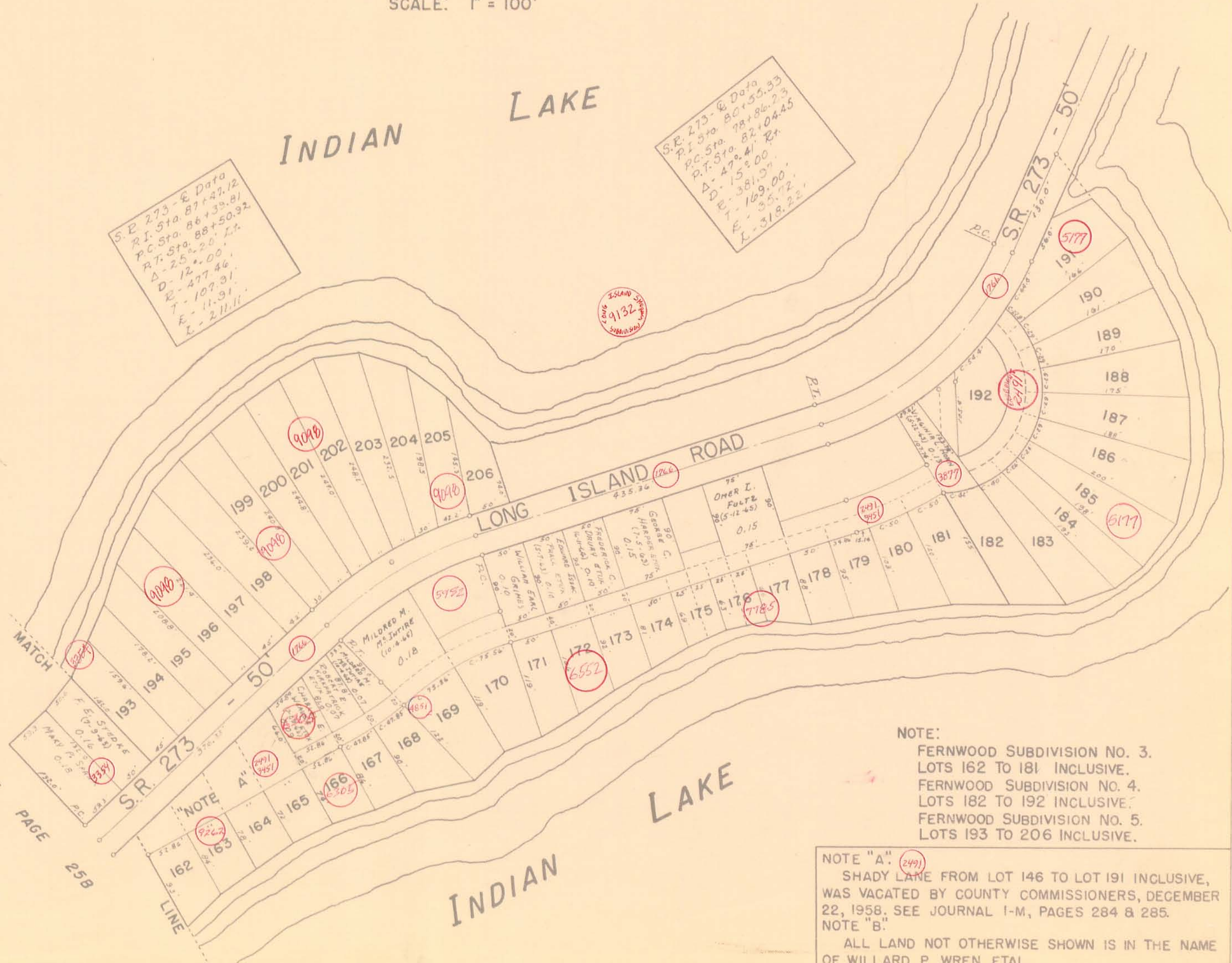
SCALE: 1" = 100'

INDIAN LAKE

S.R. 273 - E Data
 P.I. Sta. 80+55.33
 P.C. Sta. 78+86.23
 P.T. Sta. 82+04.45
 Δ = 47° 41' R+
 ΔD = 15° 00'
 ΔE = 169.00'
 ΔL = 35.72'
 Δ = 318.22'

S.R. 273 - E Data
 P.I. Sta. 87+47.12
 P.C. Sta. 86+39.81
 P.T. Sta. 88+50.92
 Δ = 25° 20' L+
 ΔD = 12° 00'
 ΔE = 477.46'
 ΔL = 107.31'
 Δ = 11.91'
 Δ = 211.11'

9132



NOTE:
 FERNWOOD SUBDIVISION NO. 3.
 LOTS 162 TO 181 INCLUSIVE.
 FERNWOOD SUBDIVISION NO. 4.
 LOTS 182 TO 192 INCLUSIVE.
 FERNWOOD SUBDIVISION NO. 5.
 LOTS 193 TO 206 INCLUSIVE.

NOTE "A" (2491)
 SHADY LANE FROM LOT 146 TO LOT 191 INCLUSIVE,
 WAS VACATED BY COUNTY COMMISSIONERS, DECEMBER
 22, 1958. SEE JOURNAL I-M, PAGES 284 & 285.
 NOTE "B"
 ALL LAND NOT OTHERWISE SHOWN IS IN THE NAME
 OF WILLARD P. WREN ETAL.

SEE PAGE 25B