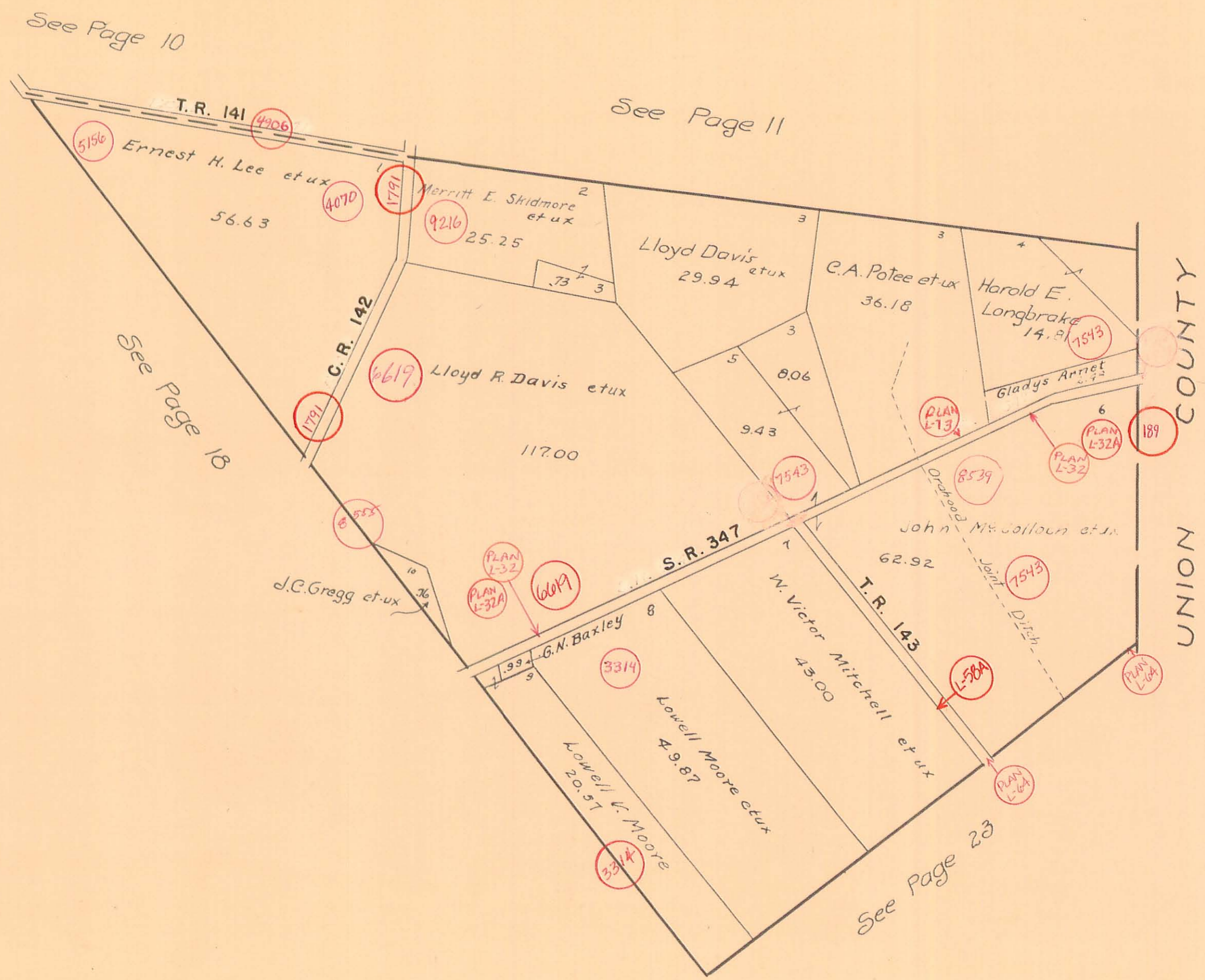


PERRY TOWNSHIP
VIRGINIA MILITARY SURVEY 6232

SCALE 10 CHAINS TO THE INCH



See Page 10

See Page 11

See Page 18

See Page 23

UNION COUNTY

T.R. 141
Ernest H. Lee et ux 56.63
Merritt E. Skidmore et ux 25.25
Lloyd Davis et ux 29.94
C.A. Patee et ux 36.18
Harold E. Longbrake 14.8
Gladys Arriet
Lloyd R. Davis et ux 117.00
John McCalloun et ux 62.92
W. Victor Mitchell et ux 43.00
G.N. Baxley
Lowell Moore et ux 49.87
Lowell C. Moore 20.57
C.R. 142
S.R. 347
T.R. 143
Joint Ditch
Ordnance

5156

4906

4070

1791

9216

6619

8583

PLAN L-32

6619

PLAN L-32A

3314

3314

7543

PLAN L-13

8539

PLAN L-32

PLAN L-32A

189

7543

L-580A

PLAN L-6A

PLAN L-6A