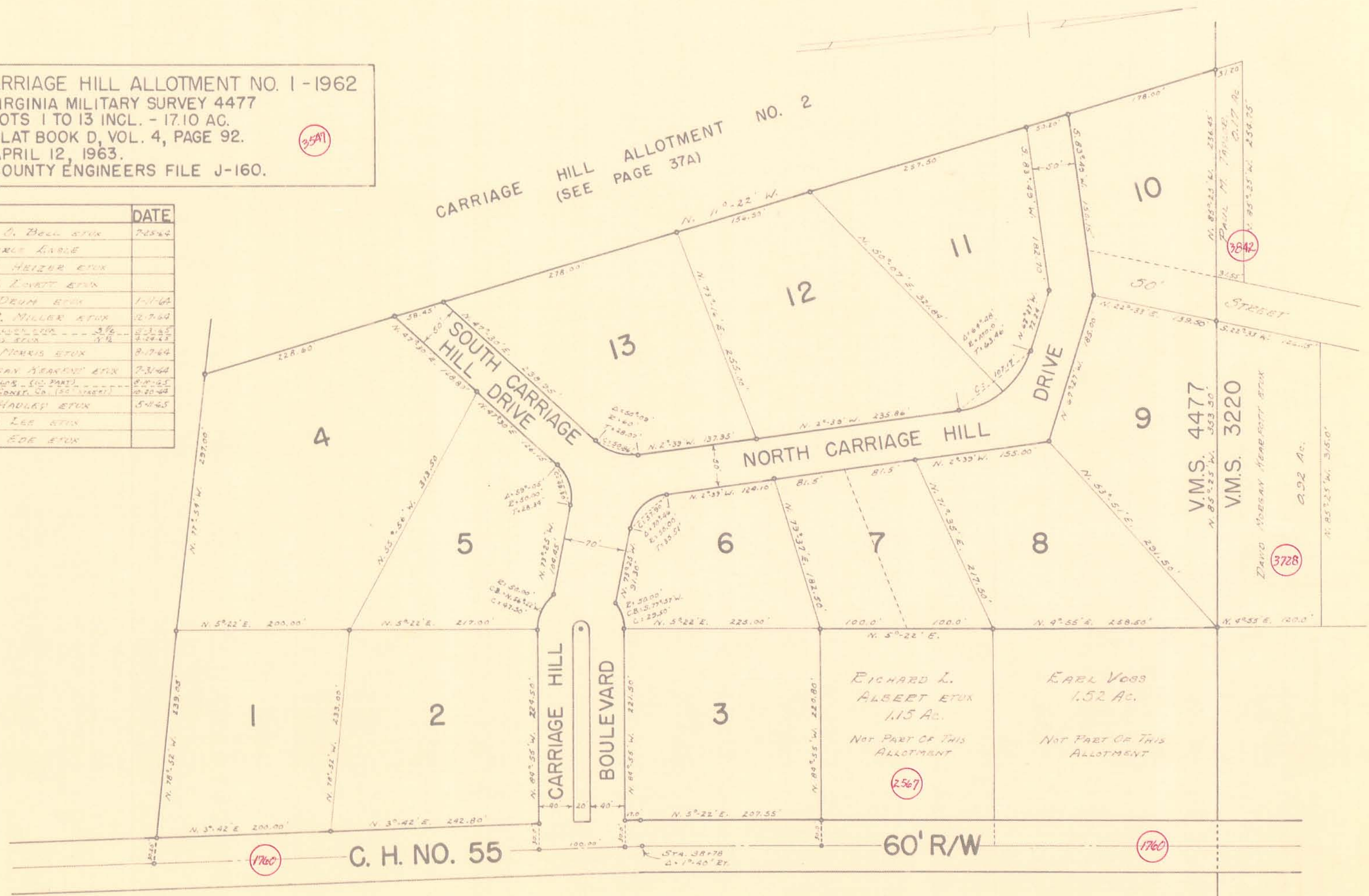


JEFFERSON TOWNSHIP  
 VIRGINIA MILITARY SURVEY 4477 PART  
 CARRIAGE HILL ALLOTMENT NO. 1

SCALE: 1" = 100'

CARRIAGE HILL ALLOTMENT NO. 1 - 1962  
 VIRGINIA MILITARY SURVEY 4477  
 LOTS 1 TO 13 INCL. - 17.10 AC.  
 PLAT BOOK D, VOL. 4, PAGE 92.  
 APRIL 12, 1963.  
 COUNTY ENGINEERS FILE J-160.

LOT	NAME	DATE
1	BERNARD O. BELL ETUX	7-28-64
2	EDWIN EARLE EAGLE	
3	GEORGE M. HEIZER ETUX	
4	ROBERT J. LEVITT ETUX	
5	PAUL W. DEUM ETUX	1-11-64
6	MARVIN C. MILLER ETUX	12-7-64
7	DAVID M. MURPHY ETUX SARL & MARRAS ETUX	3-2-65 3-28-65
8	GARY E. MORRIS ETUX	9-7-64
9	DAVID MURRAY HEARNEY ETUX	7-31-64
10	PAUL W. ZAPUS, INC. PART LONG ISLAND CONCRETE CO. (50% INTEREST)	8-17-65 10-20-64
11	JACK N. HADLEY ETUX	5-16-65
12	DONALD M. LEE ETUX	
13	WILSON Z. BOE ETUX	



DRAWN BY DANIEL E. GILBERT  
 APRIL 18, 1963