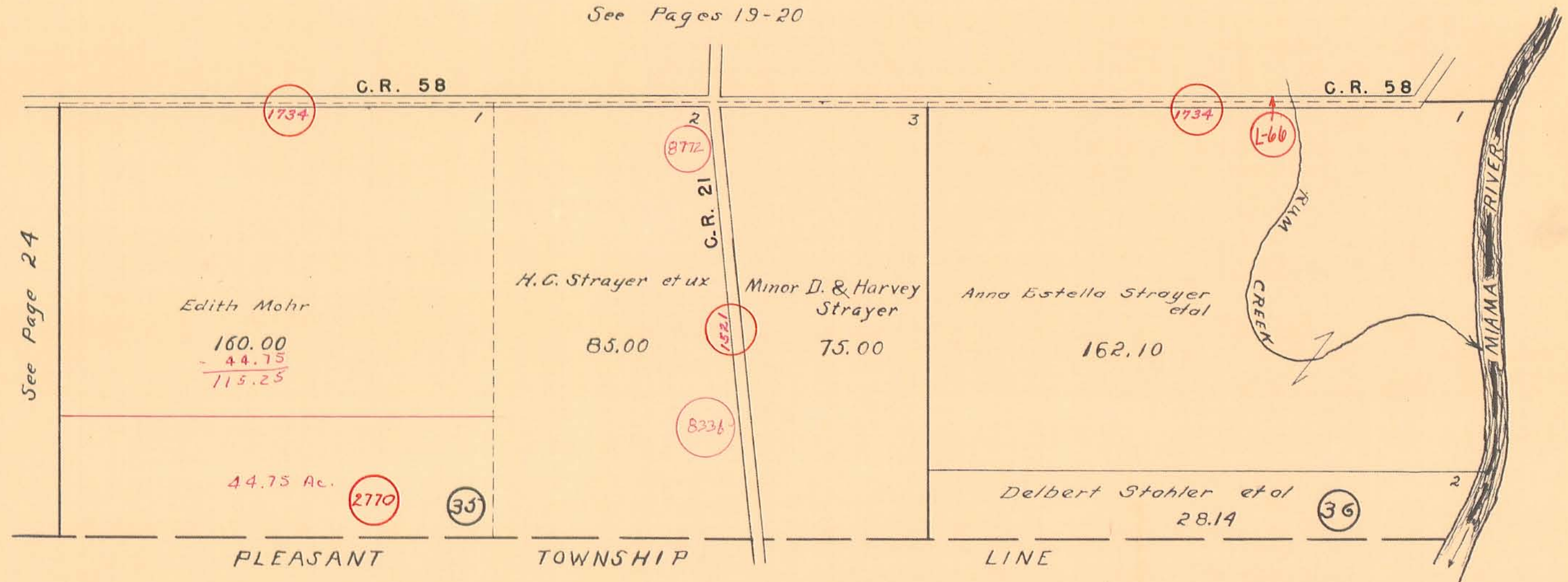


**BLOOMFIELD TOWNSHIP**  
**SECTION 35 TOWN 2 RANGE 8**  
**SECTION 36 TOWN 2 RANGE 8**

SCALE 10 CHAINS TO THE INCH

See Pages 19-20



See Page 24

Edith Mohr  

$$\begin{array}{r} 160.00 \\ - 44.75 \\ \hline 115.25 \end{array}$$

H.C. Strayer et ux  
 85.00

Minor D. & Harvey  
 Strayer  
 75.00

Anna Estella Strayer  
 et al  
 162.10

44.75 Ac.

Delbert Stohler et al  
 28.14