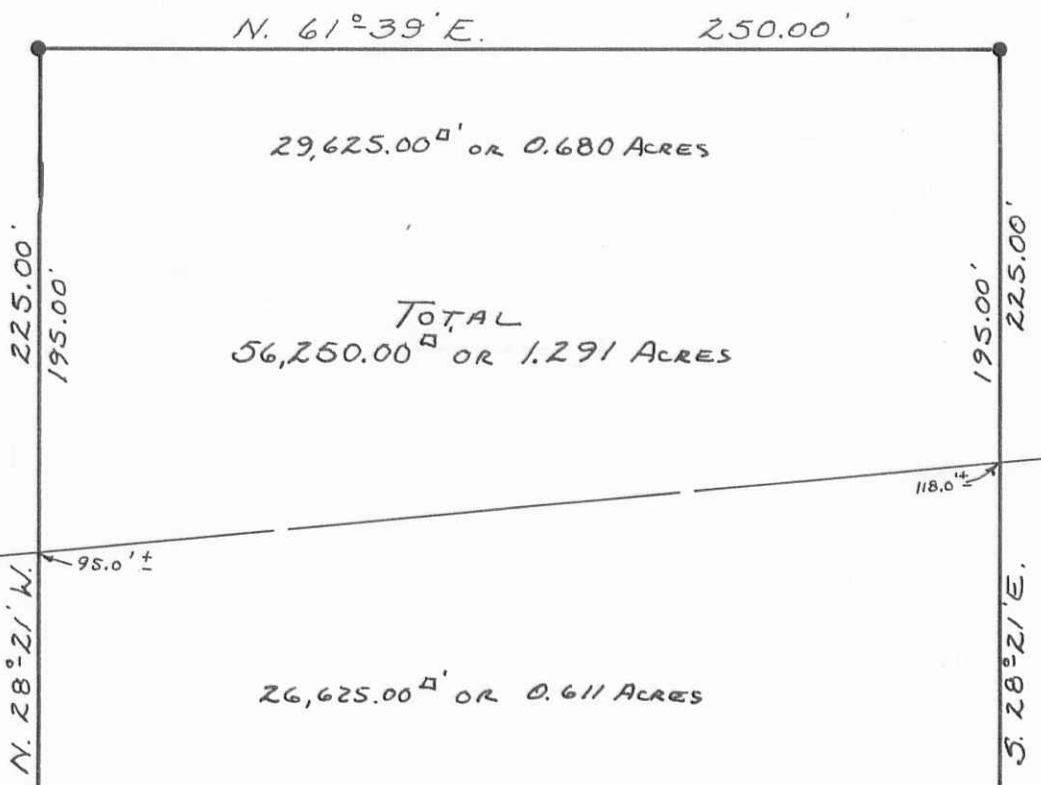
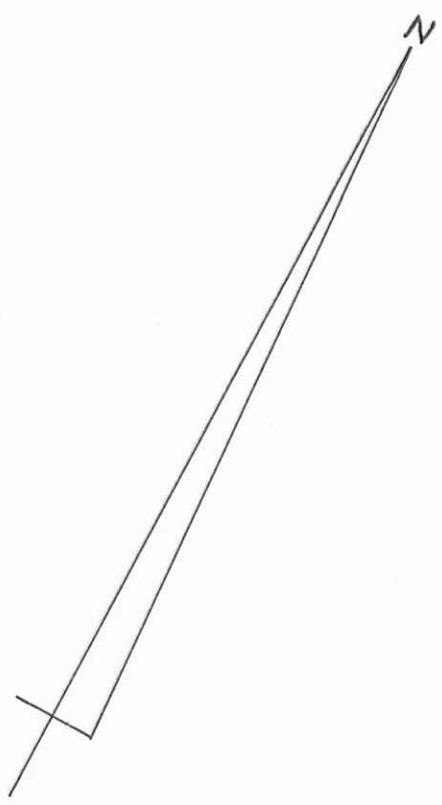


PALMEROSA FARMS
O.R. VOL. 19 PAGES 241-247
(5-6-1986)

PER. PAR. No. 53-149-00-00-013
74.07 ACRES



V.M.S. No. 3680
V.M.S. No. 479

SCHOOL DISTRICT LINE.

TRACT LINE

Scaled Dist. - 135.00'±

2 INCH "A" IRON BAR FD.
Δ = 1°39' Lt.
STA. 14+28.80
F.B. 599 P. 45

- - R.R. SPIKES SET.
- - 5/8" X 30" REBARS SET.

PALMEROSA FARMS
O.R. VOL. 19 PAGES 241-247
(5-6-1986)

PER. PAR. No. 54-149-00-00-032
42.00 ACRES



PALMEROSA FARMS TO HARPER SURVEY
V.M.S. No. 479 AND 3680, ZANE TOWNSHIP,
LOGAN COUNTY, OHIO

SCALE: 1" = 50'	APPROVED BY:	DRAWN BY D.E.G.
DATE: 4-22-1989		REVISED

Daniel E. Gilbert
DANIEL E. GILBERT, P.S.
REG. SUR. No. 5402

DRAWING NUMBER
089-018

INDEXED ON MAP
7730

S-901