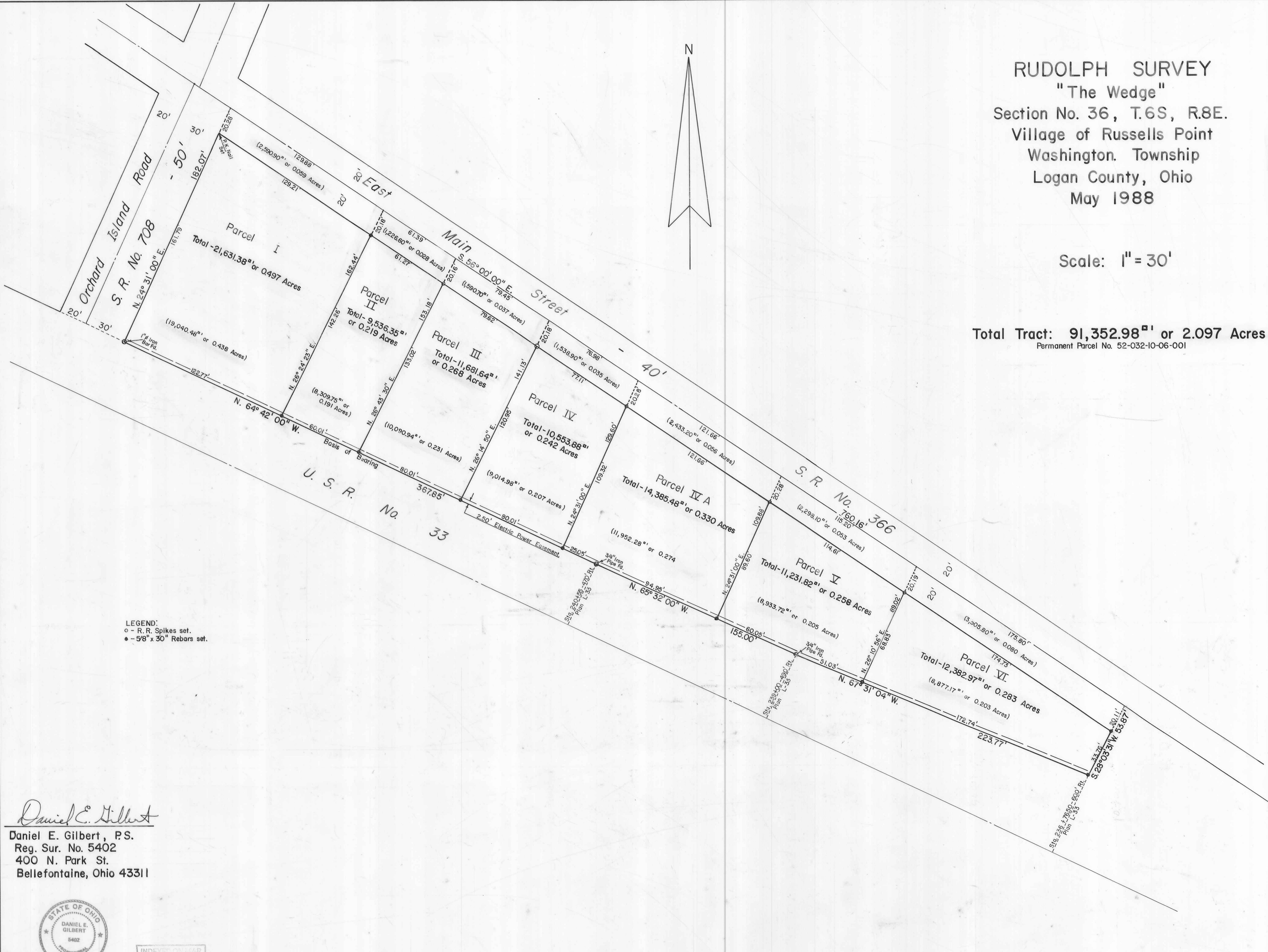


RUDOLPH SURVEY  
 "The Wedge"  
 Section No. 36, T.6S, R.8E.  
 Village of Russells Point  
 Washington Township  
 Logan County, Ohio  
 May 1988

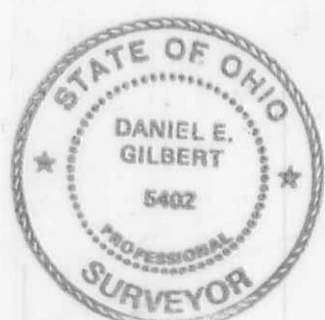
Scale: 1" = 30'

Total Tract: 91,352.98<sup>sq</sup> ft or 2.097 Acres  
 Permanent Parcel No. 52-032-10-06-001



LEGEND:  
 ○ - R. R. Spikes set.  
 ● - 5/8" x 30" Rebars set.

*Daniel E. Gilbert*  
 Daniel E. Gilbert, P.S.  
 Reg. Sur. No. 5402  
 400 N. Park St.  
 Bellefontaine, Ohio 43311



INDEX MAP  
 3294