

Donald E. King et ux
 O.R. No. 81 P. 299 (2-24-1989)
 50-134-00-00-006.000

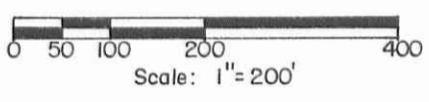
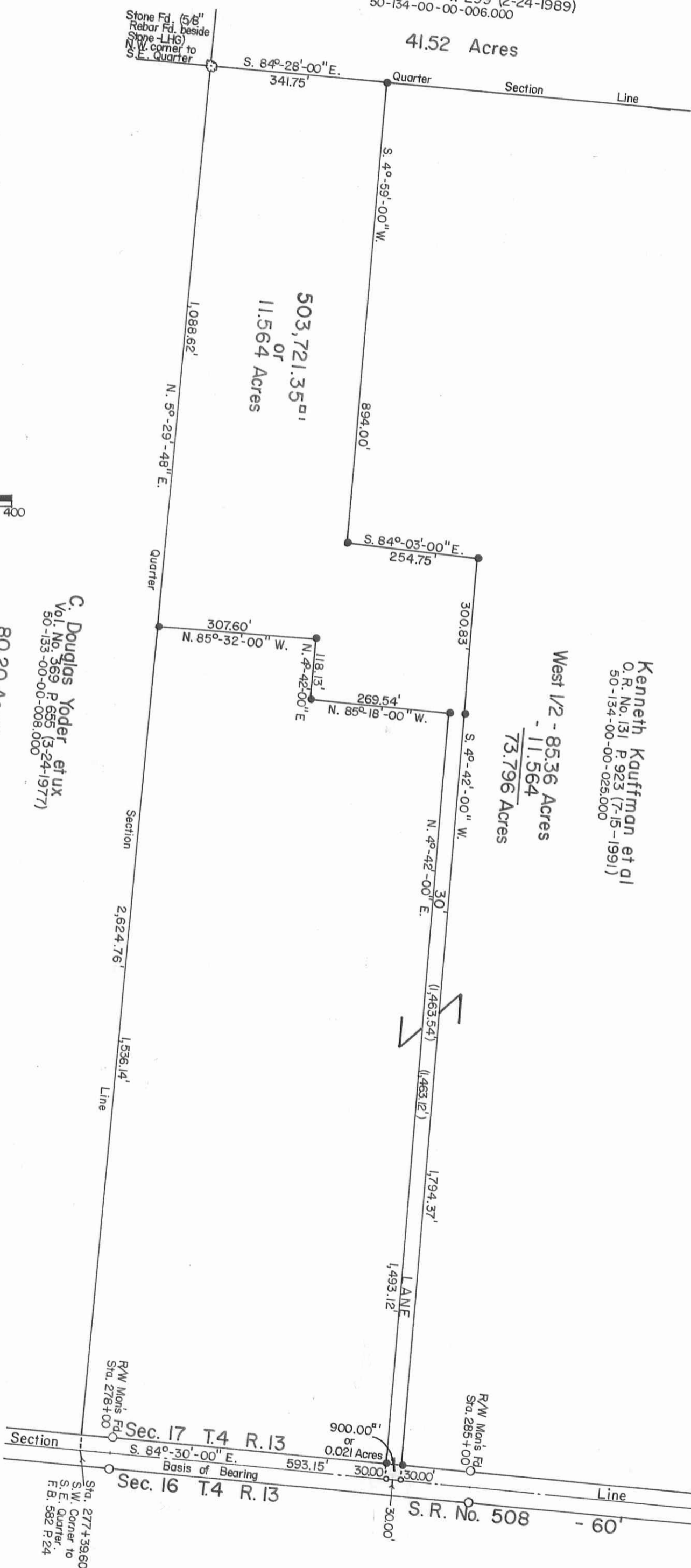
41.52 Acres

Kenneth Kauffman et al
 O.R. No. 131 P. 923 (7-15-1991)
 50-134-00-00-025.000

West 1/2 - 85.36 Acres
 - 11.564
 73.796 Acres

C. Douglas Yoder et ux
 Vol. No. 369 P. 655 (3-24-1977)
 50-133-00-00-008.000

80.20 Acres



INDEXED ON MAP
 8640

TOLERANCES (EXCEPT AS NOTED)		REVISIONS		KAUFFMAN SURVEY			
NO.	DATE	BY	NO.	DATE	BY	SECTION	TOWNSHIP
1			1			Section No. 17, T.4, R.13	BMRS
2			2			LOGAN COUNTY, OHIO	
3			3				
4			4				
5			5				

DRAWN BY	DEG	SCALE	1" = 200'	MATERIAL	As Noted
CHK'D	DEG	DATE	10-28-1991	DRAWING NO.	091-051
TRACED	DEG	APP'D			

SYMBOLS:
 o - R. R. Spikes Set.
 ● - 5/8" x 30" Rebars Set.