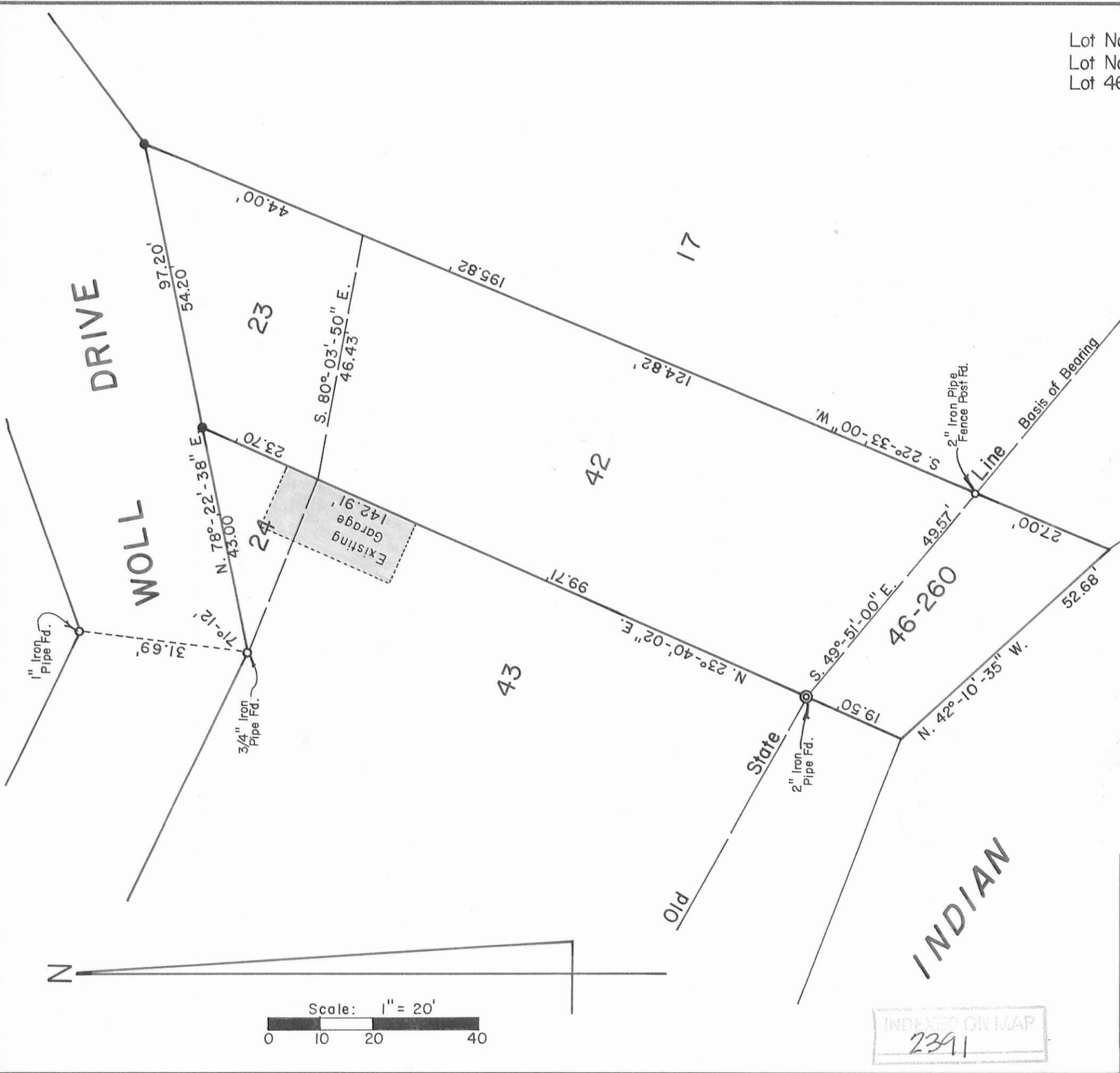


Lot No. 23 - Per. Par. No. 43-005-18-18-027.000-1,520.360<sup>sq</sup> or 0.035 Acres.  
 Lot No. 42 - Per. Par. No. 43-005-18-18-028.000-5,207.715<sup>sq</sup> or 0.120 Acres.  
 Lot 46-260 - Per. Par. No. 43-005-18-18-028.001-1,107.255<sup>sq</sup> or 0.025 Acres.  
 Total----- 7,825.330<sup>sq</sup> or 0.180 Acres.



References:  
 Thomas Addition No. 2.  
 Plat Cab. A, Slide 265 (10-14-1946).  
 Thomas Addition No. 4.  
 Plat Cab. A, Slide 291 (6-20-1951).  
 Land Installment Contract.  
 O. R. No. 26, Pages 546-549 (8-13-1986).



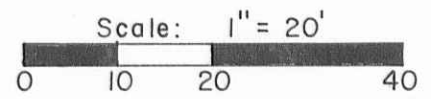
● - 5/8" x 30" Rebars Set.

BERRY SURVEY - Lots No. 23, 42, and 46-260, Thomas Addition to Chippewa Park, V.M.S. No. 12276, Stokes Township, Logan County, Ohio.

SCALE: 1" = 20'	APPROVED BY:	DRAWN BY DEG
DATE: 6-14-1990		REVISED

*Daniel E. Gilbert*  
 Daniel E. Gilbert, P.S.  
 Reg. Sur. No. 5402

DRAWING NUMBER  
 090-033



INDEXED ON MAP  
 2391

S-848