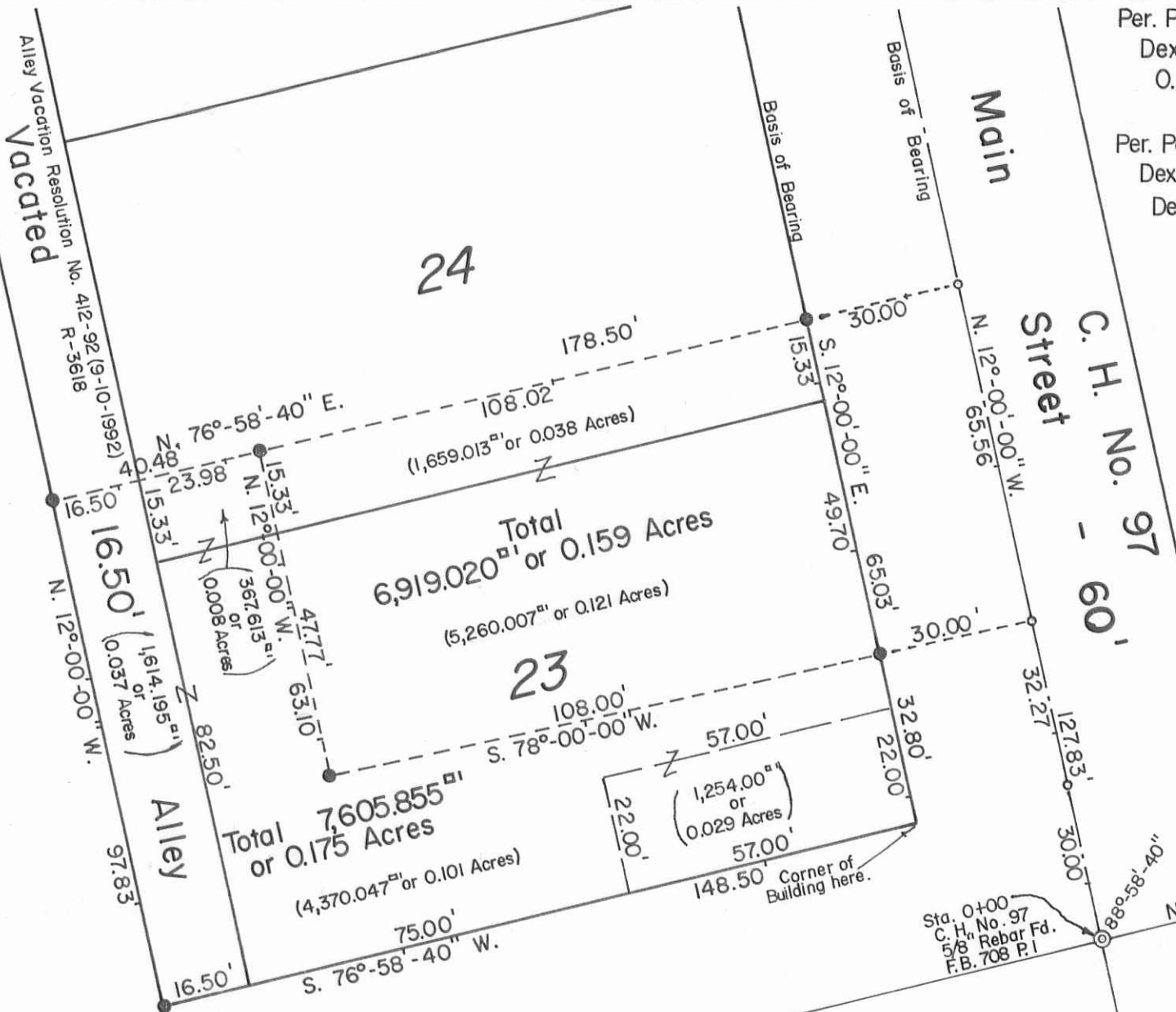
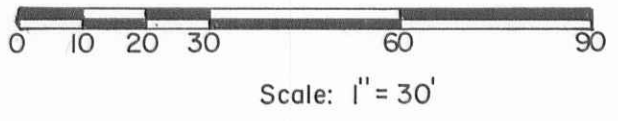


N



Per. Par. No. 36-021-19-03-005.000 Lots No. 23 Pt.-24 Pt.  
 Dexter and Mary Lou Blanton  
 O.R. No. 7 P. 361-362 (9-22-1988).

Per. Par. No. 36-021-19-03-006.000 Lot No. 23 Pt.  
 Dexter and Mary Lou Blanton (22' x 57' S.E. Corner).  
 Deed Vol. No. 393 P. 931 (9-11-1981).



Reference:  
 Plat of Richland Town (New Richland).  
 Deed Volume No. D Page 376 (8-2-1832).  
 Plat. Cabinet A Slide 156.

INDEXED ON MAP  
 8832



SYMBOLS:  
 ○ - P. K. Nails Set.  
 ● - 5/8" x 30" Rebars Set.

**BLANTON SURVEY - Part of Lots No. 23 and 24, Unincorporated Village of New Richland, Richland Township, Logan County, Ohio.**

SCALE: 1" = 30'	APPROVED BY:	DRAWN BY DEG
DATE: 7-21-1993		REVISED
<i>Daniel E. Gilbert</i> Daniel E. Gilbert, P.S. Reg. Sur. No. 5402		DRAWING NUMBER 093-037

S-784