

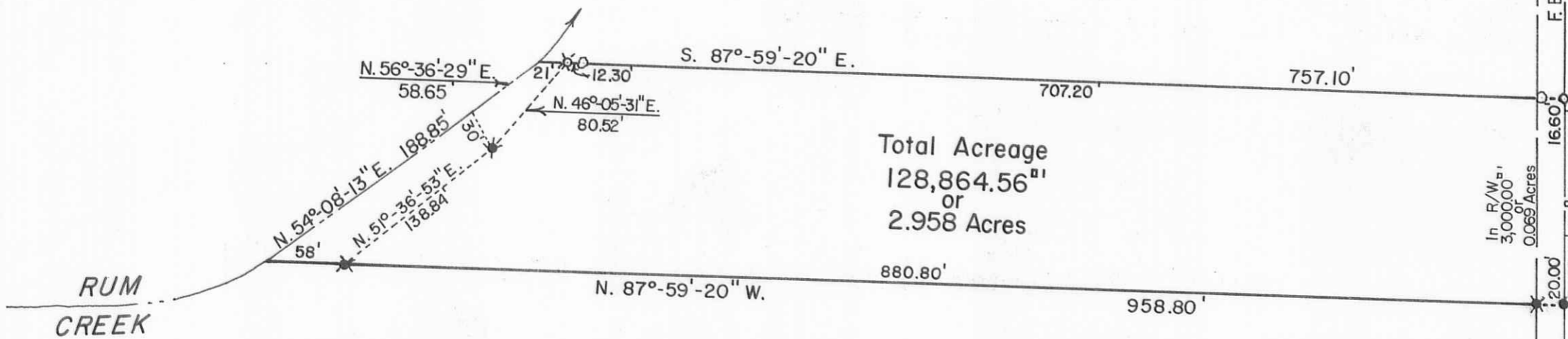
Norma J. Covault
 O.R. No. 106 P 886 (5-10-1990)
 01-071-00-00-015.004

9.293 Acres

Total Acreage
 128,864.56^{sq ft}
 or
 2.958 Acres

Julia L. Zahn
 O. R. No. 75 P. 313 (11-21-1988)
 01-071-00-00-015.000

120.380 Acres
 - 2.958
 117.422 Acres

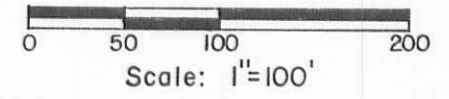


Basis of Bearing
 S. 0°-10'-00\" W. 150.00'
 In R/W 3,000.00'
 0.069 Acres
 F.B. No. 655 P. 32-33
 16.60'

C.H. No. 34 -40

G. Emerson Sherer
 Vol. 303 P. 167 (6-12-1965)
 01-071-00-00-013.000

66.020 Acres



- SYMBOLS:
- - Concrete Posts Fd.
 - - R.R. Spike Fd. (Lee).
 - - R.R. Spike Set.
 - ⊗ - 5/8" x 30" Rebar Fd. (Lee).
 - ⊗ - 5/8" x 30" Rebars Set.

Daniel E. Gilbert
 Daniel E. Gilbert, P.S.
 Reg. Sur. No. 5402
 400 N. Park St.
 Bellefontaine, Ohio 43311



INDEXED ON MAP
 1203

TOLERANCES (EXCEPT AS NOTED)	REVISIONS			Zahn to Baldauf Survey Part of Northeast Quarter of Section No. 28, Town 2, Range 8, Bloomfield Township, Logan County, Ohio.		
	NO.	DATE	BY			
DECIMAL	1			DRAWN BY DEG	SCALE 1"=100'	MATERIAL
±	2					
FRACTIONAL	3			CHK'D	DATE 5-20-1991	DRAWING NO. 091-024
±	4					
ANGULAR	5			TRACED	APP'D	
±						

S-680