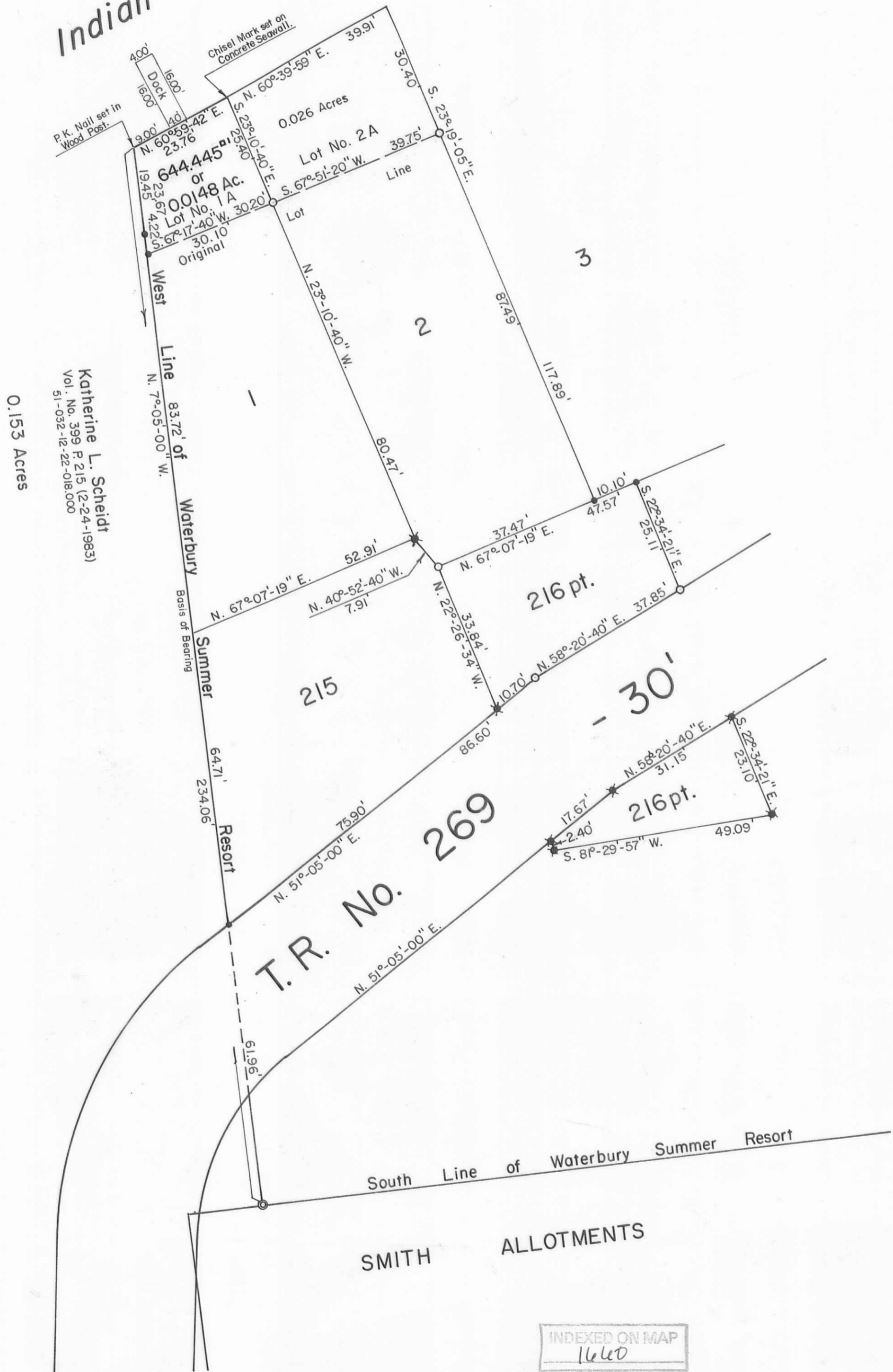
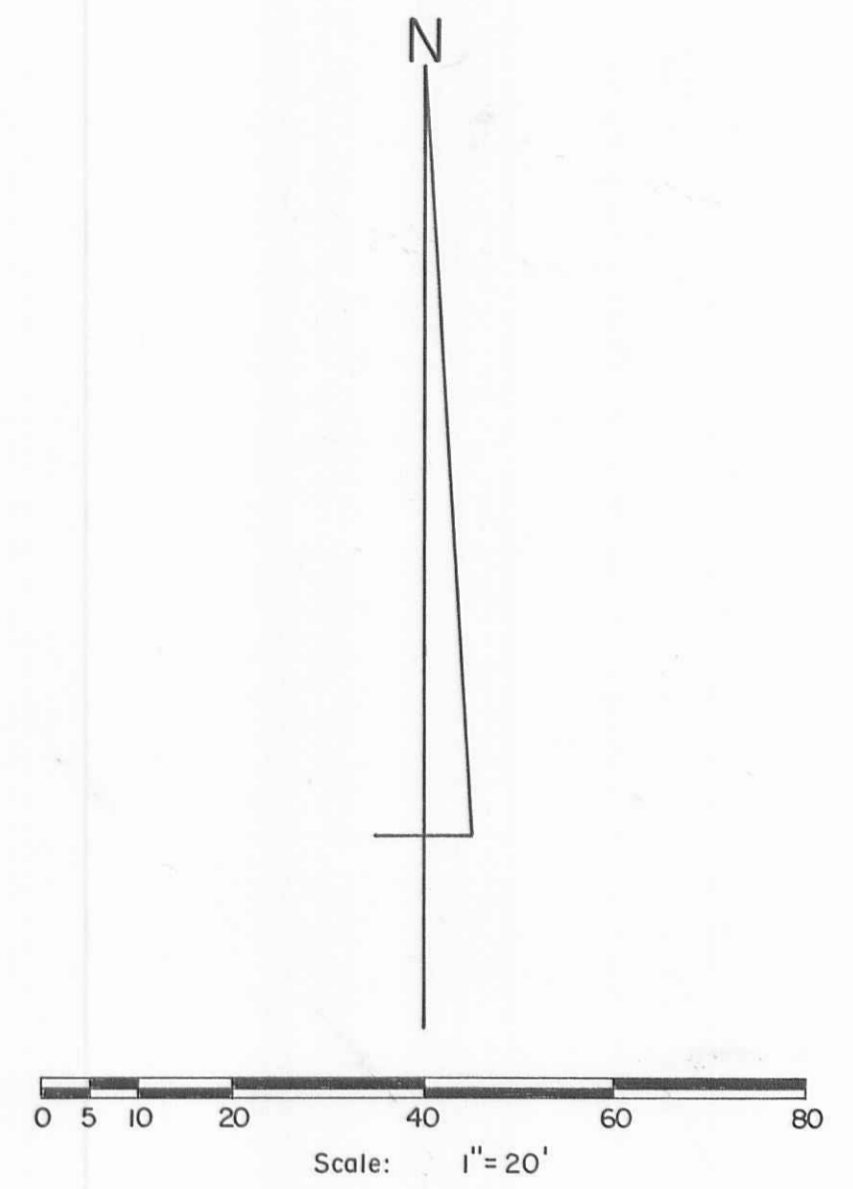


Indian Lake



Katherine L. Scheidt
Vol. No. 399 P. 215 (2-24-1983)
51-032-12-22-018.000
0.153 Acres



- References:
- WATERBURY SUMMER RESORT (8-12-1925)
Plat Cab. A Slides 223-225.
 - T. R. No. 269 Dedication Plat (1-25-1947)
Plan X-269.
 - Lot No. 1 and No. 215 pt. (51-032-12-22-017.000)
Eugene F. Trell et ux
O. R. No. 253 P. 896 (4-14-1995)
 - Lot No. 2, 2A and 216 pt. (51-032-12-22-016.000)
Timothy D. Lillibridge et al
O. R. No. 258 P. 271 (6-7-1995).

- Symbols:
- - 1/2" Iron Pipes Fd.
 - - 3/4" Iron Pipes Fd.
 - ⊙ - 1 1/2" Iron Pipe Fd.
 - ⊗ - 5/8" x 30" Rebars Set.

Trell and Lillibridge Survey-Lots No. 1, 1A, 2, 2A, 215 and 216 Pt's
Waterbury Summer Resort, V.M.S. No. 9925-9946-10121,
Washington Township, Logan County, Ohio.

SCALE: 1" = 20'	APPROVED BY	DRAWN BY DEG
DATE: 4-9-1996		REVISED: 8-5-1996

Daniel E. Gilbert, P.S.
Reg. Sur. No. 5402

DRAWING NUMBER
095-047



INDEXED ON MAP
1660

S-644