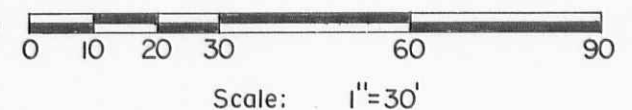
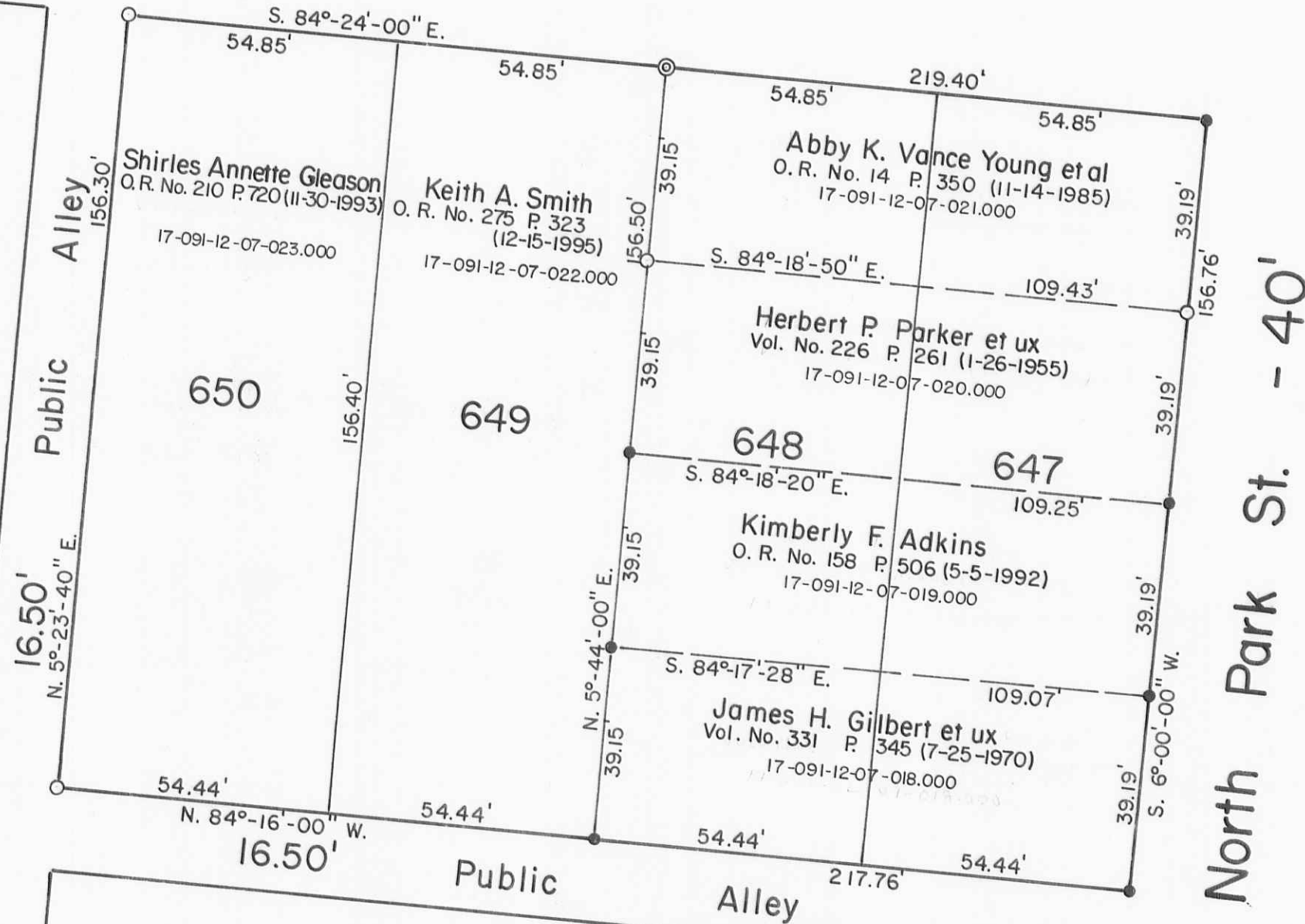


East High Ave. - 50'



Reference:

Stanton Addition No. 2
(5-22-1866).
Plat Cab. A Slide 9.

Symbols:

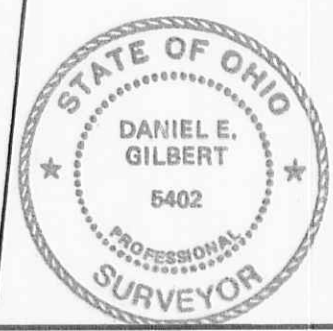
○ - 1" Iron Pipes Fd.
⊙ - 1 1/2" Iron Pipe Fd.
● - 5/8" x 30' Rebars Set.

Kimberly F. Adkins (Carman) Survey- Part of Lots No. 647-648, Stanton Addition No. 2, City of Bellefontaine, Lake Township, Logan County, Ohio.

SCALE: 1" = 30'	APPROVED BY:	DRAWN BY: DEG
DATE: 4-19-1996		REVISED:

Daniel E. Gilbert
Daniel E. Gilbert, P.S.
Reg. Sur. No. 5402

DRAWING NUMBER
096-022



INDEXED ON MAP
9069

S-602