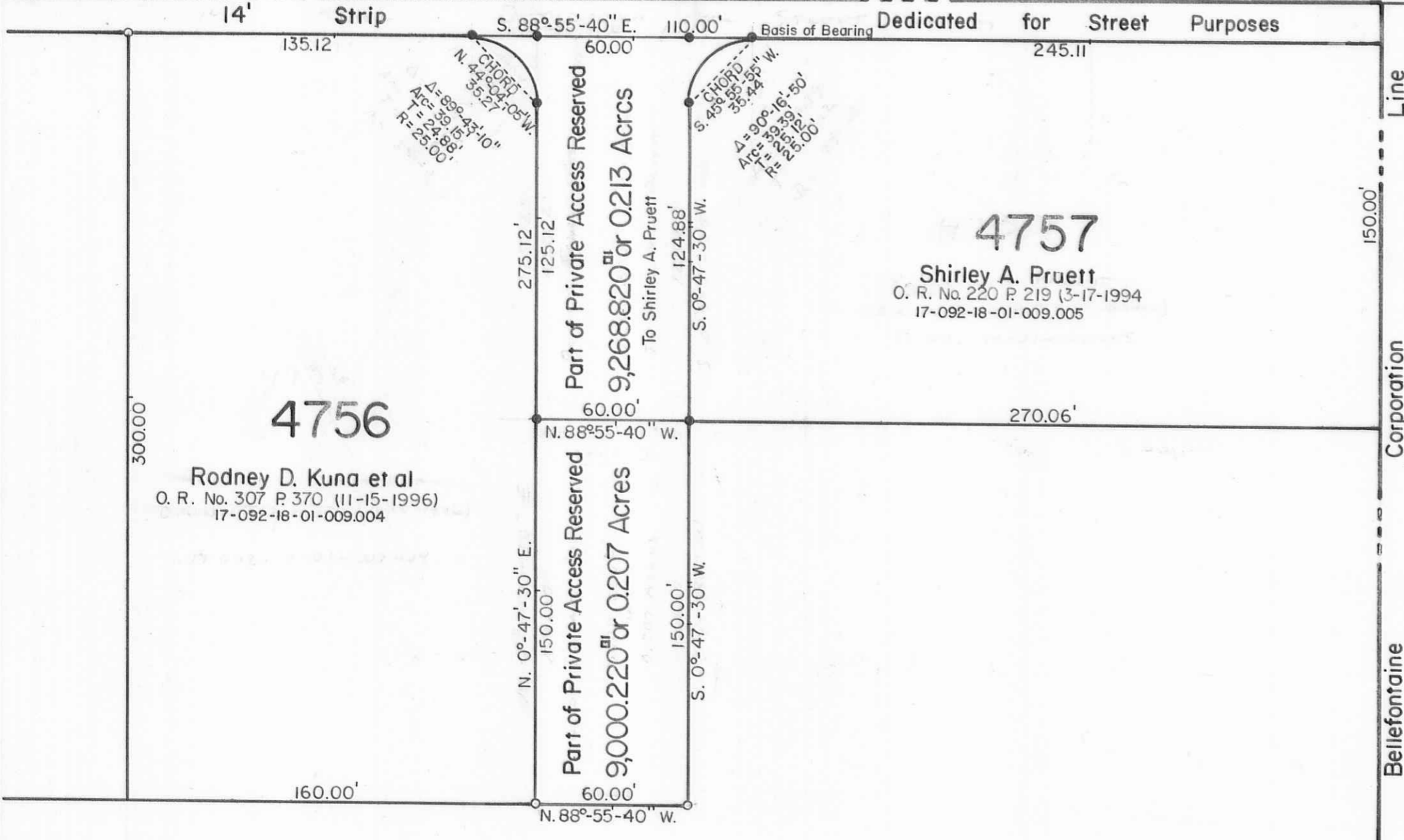
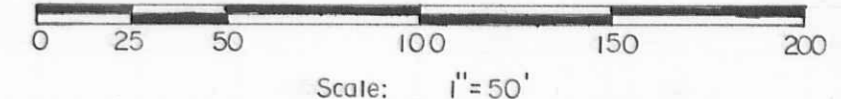


T. R. No. 185 Brennan Road 32' Wide



N



SYMBOLS:
 ○ - 5/8" Rebars Fd.
 ● - 5/8" x 30" Rebars Set.

REFERENCE:
 Ludlow Heights Phase One.
 Plat Cab. A Slide 693B (12-1-1989).

L. P. Z. Construction Co., Inc.
 Deed Vol. No. 341 P. 628 (7-18-1972)
 17-092-18-01-009.000

Original - 79.36 Acrs
 (6.68 Acres)



L.P.Z. Construction Co., Inc. to Pruett Survey, V.M.S. No. 4478,
 City of Bellefontaine, Lake Township,
 Logan County, Ohio.

SCALE: 1" = 50'	APPROVED BY:	DRAWN BY: DEG
DATE: 6-29-2000		REVISED:

Daniel E. Gilbert
 Daniel E. Gilbert, P.S.
 Reg. Sur. No. 5402

DRAWING NUMBER
 2000-034

INDEXED ON MAP
 7989

S-460