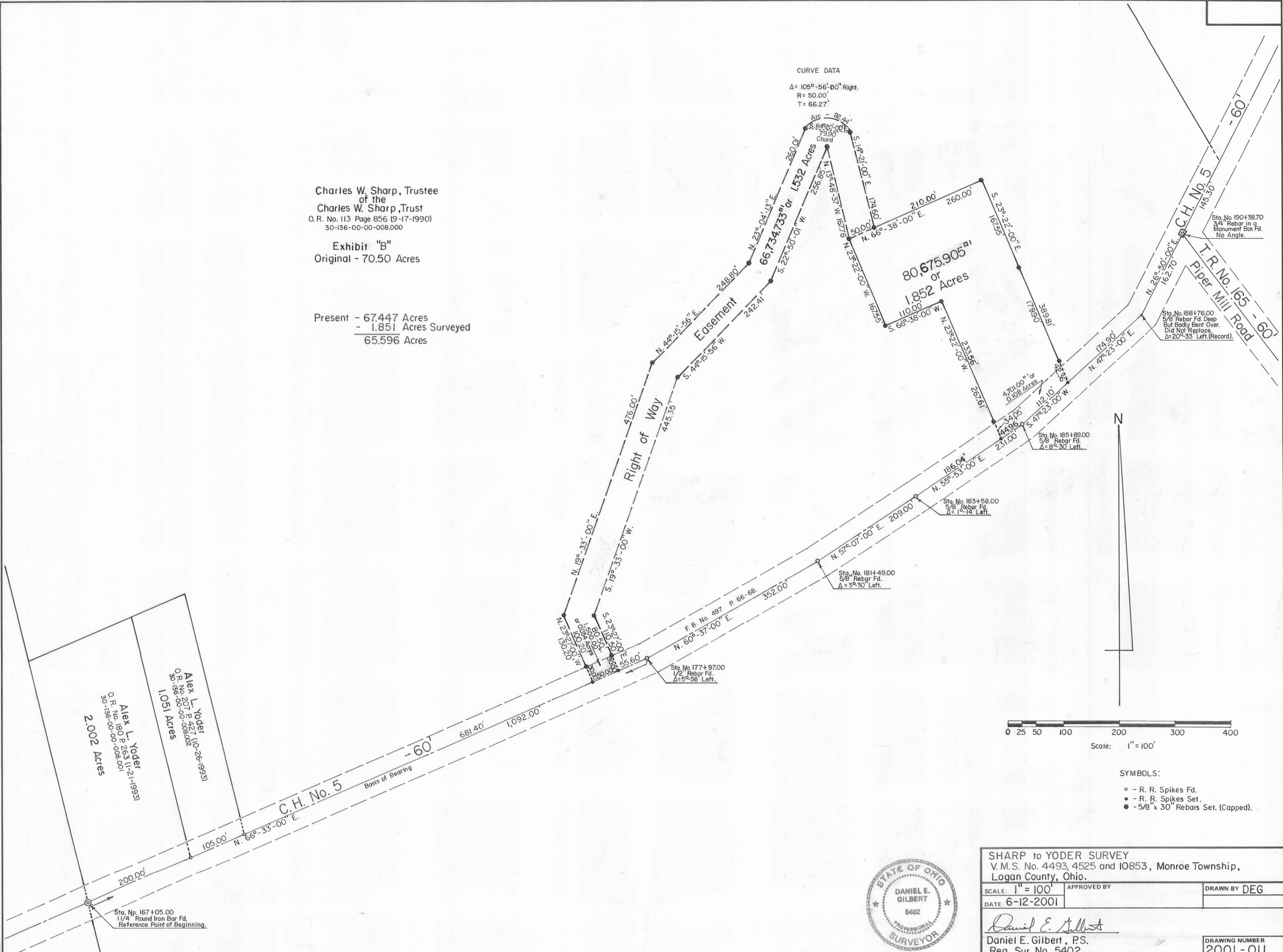


Charles W. Sharp, Trustee
of the
Charles W. Sharp, Trust
O.R. No. 113 Page 856 (9-17-1990)
30-136-00-00-008.000

Exhibit "B"
Original - 70.50 Acres

Present - 67.447 Acres
- 1.851 Acres Surveyed
65.596 Acres

CURVE DATA
 $\Delta = 105^\circ - 56' - 00''$ Right.
 $R = 50.00'$
 $T = 66.27'$



Sta. No. 190+38.70
3/4" Rebar in a
Monument Box Fd.
No Angle.

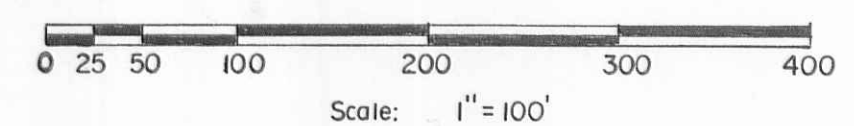
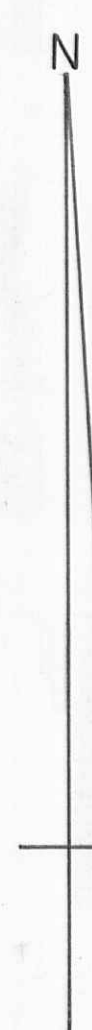
Sta. No. 188+76.00
5/8" Rebar Fd. Deep
But Badly Bent Over.
Did Not Replace.
 $\Delta = 20^\circ - 33'$ Left (Record).

Sta. No. 185+89.00
5/8" Rebar Fd.
 $\Delta = 6^\circ - 30'$ Left.

Sta. No. 183+58.00
5/8" Rebar Fd.
 $\Delta = 1^\circ - 14'$ Left.

Sta. No. 181+49.00
5/8" Rebar Fd.
 $\Delta = 3^\circ - 30'$ Left.

Sta. No. 177+97.00
1/2" Rebar Fd.
 $\Delta = 5^\circ - 56'$ Left.

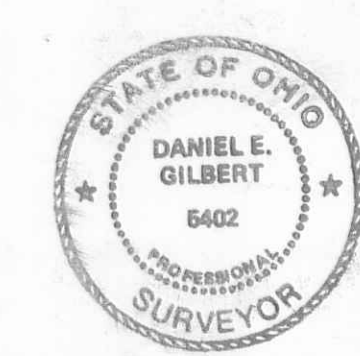


- SYMBOLS:
- - R. R. Spikes Fd.
 - - R. R. Spikes Set.
 - - 5/8" x 30" Rebars Set. (Capped).

Alex L. Yoder
O.R. No. 207 P. 427
30-136-00-00-008.000
1,051 Acres

Alex L. Yoder
O.R. No. 180 P. 263 (1-21-1993)
30-136-00-00-008.000
2,002 Acres

Sta. No. 167+05.00
1/4" Round Iron Bar Fd.
Reference Point of Beginning.



SHARP to YODER SURVEY V.M.S. No. 4493, 4525 and 10853, Monroe Township, Logan County, Ohio.		
SCALE: 1" = 100'	APPROVED BY	DRAWN BY DEG
DATE: 6-12-2001		
Daniel E. Gilbert Daniel E. Gilbert, P.S. Reg. Sur. No. 5402		DRAWING NUMBER 2001-011

INDEXED ON MAP
876d
3-448