

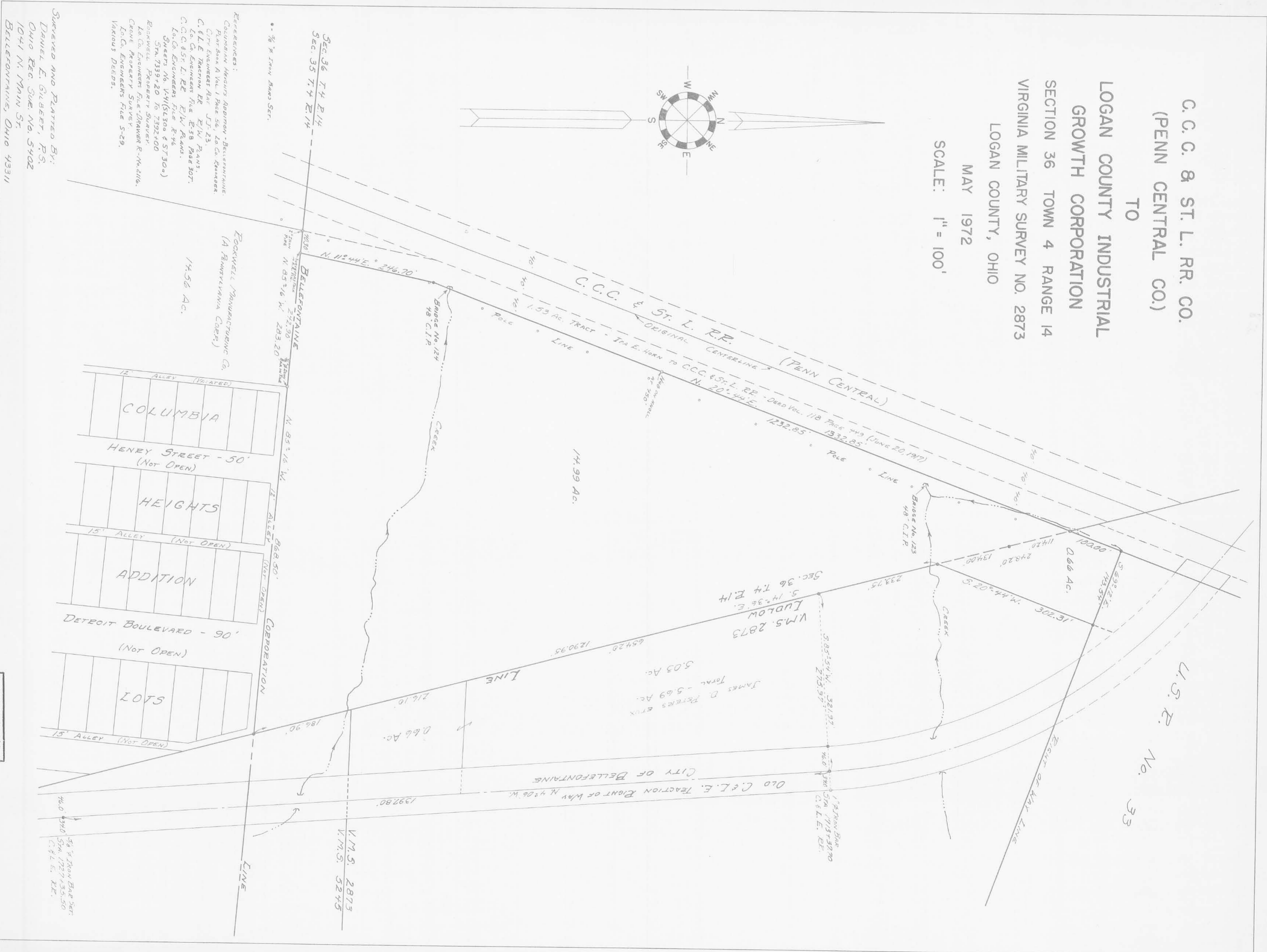
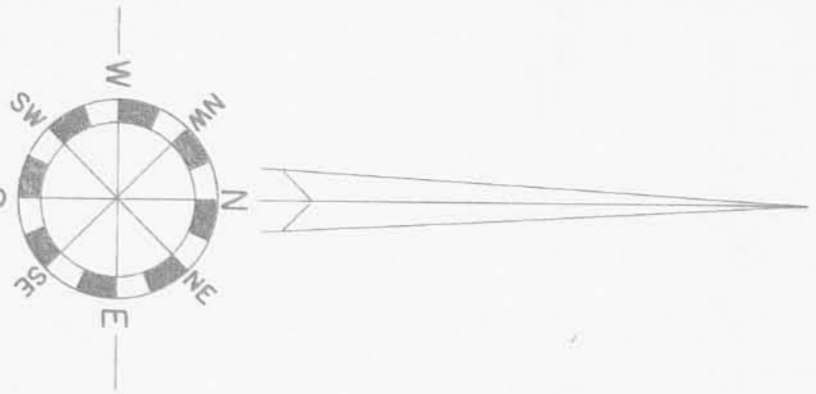
C. C. C. & ST. L. RR. CO.
(PENN CENTRAL CO.)

TO

LOGAN COUNTY INDUSTRIAL
GROWTH CORPORATION
SECTION 36 TOWN 4 RANGE 14
VIRGINIA MILITARY SURVEY NO. 2873
LOGAN COUNTY, OHIO

MAY 1972

SCALE: 1" = 100'



SEC 36 T4 R14
SEC 35 T4 R14

- REFERENCES:
- Columbian Heights Addition - Bellefontaine Plat Book A Vol. 1 Page 56, to Co. Recorder. City Engineers Plat. J.T. 23.
 - C. F. L. E. Tracton RR. E/W PLANS, to Co. Engineers File E-38 Map 307.
 - C. C. & St. L. RR. E/W PLANS, to Co. Engineers File E-46.
 - Sheets No. V-41(SL300 & ST300)
 - Sta. 7399+20 to 7392+00
 - Rockwell Property Survey
 - to Co. Engineers File DRAWER R-462116.
 - Crone Property Survey
 - to Co. Engineers File 5-29.
 - VARIOUS DEEDS.

SURVEYED AND PLATTED BY:
DANIEL E. GILBERT, P.S.
OHIO REG. SUR. NO. 5402
1041 N. MAIN ST.
BELLEFONTAINE, OHIO 43311

INDEXED ON MAP
R-5452

S-351

S-351