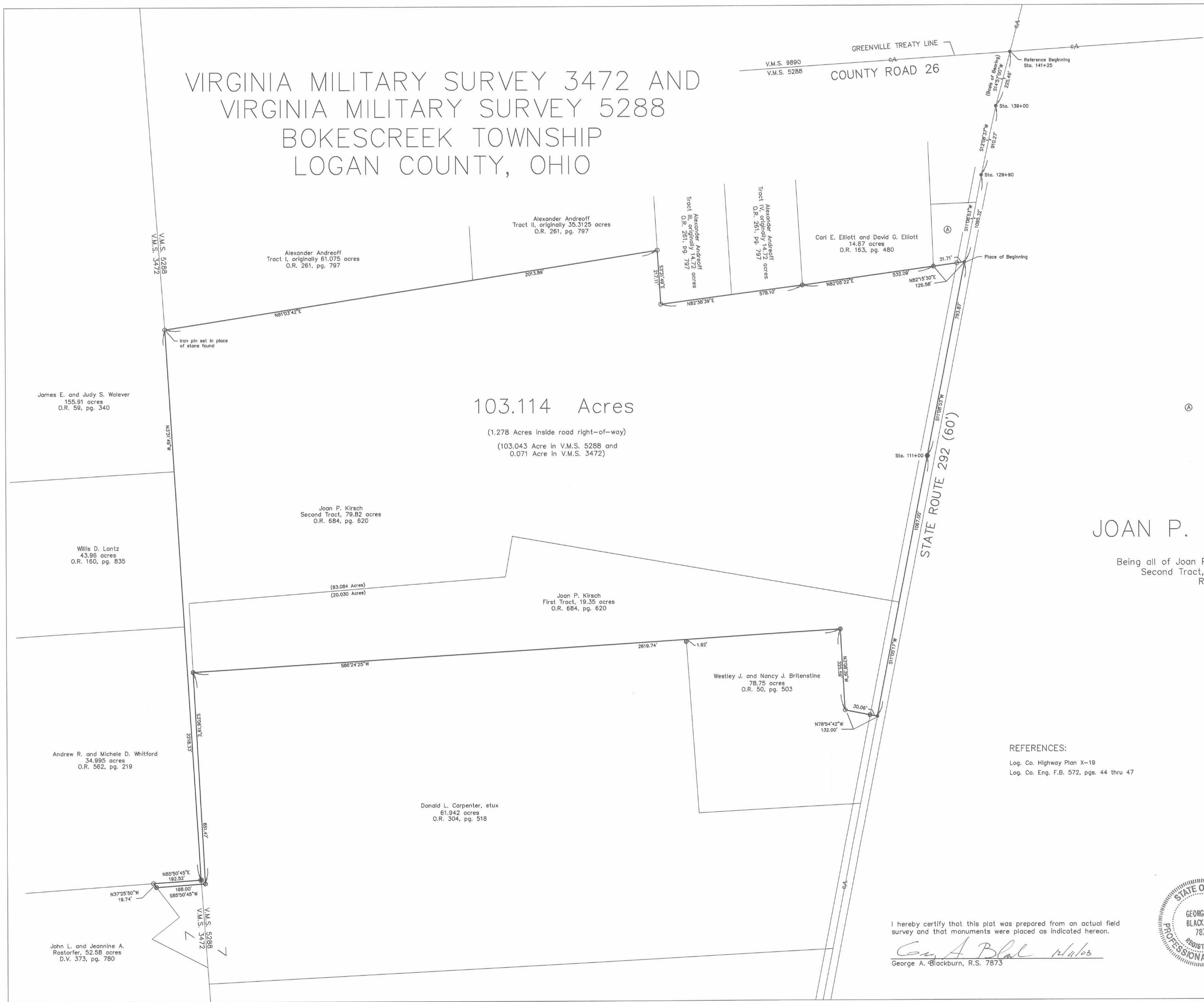
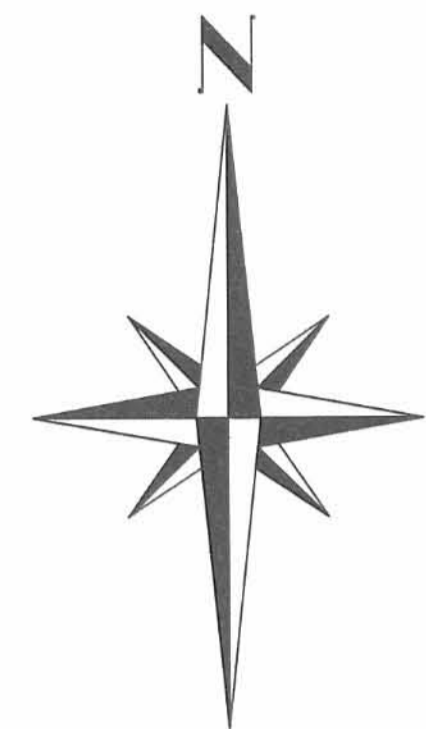


VIRGINIA MILITARY SURVEY 3472 AND VIRGINIA MILITARY SURVEY 5288 BOKESCREEK TOWNSHIP LOGAN COUNTY, OHIO



103.114 Acres
(1.278 Acres inside road right-of-way)
(103.043 Acre in V.M.S. 5288 and
0.071 Acre in V.M.S. 3472)

Ⓐ Buckeye Pipe Line Company, L.P.
0.861 acre
O.R. 92, pg. 889

JOAN P. KIRSCH SURVEY

Being all of Joan P. Kirsch's First Tract, 19.35 acres and
Second Tract, 79.82 acres, described in Official
Record 684, page 620.

REFERENCES:
Log. Co. Highway Plan X-19
Log. Co. Eng. F.B. 572, pgs. 44 thru 47

- Railroad spike found
- PK nail found
- 5/8" Iron pin found
- 5/8" Iron pin set
- 3/4" iron pipe found

I hereby certify that this plot was prepared from an actual field
survey and that monuments were placed as indicated hereon.
George A. Blackburn
George A. Blackburn, R.S. 7873



BLACKBURN SURVEYING
12125 GREEN STREET
MIDDLEBURG, OHIO 43336
(937) 666-5605

Filename: Kirsch 12-03
Scale: 1" = 200'
Date: 12/11/03
F.B. 9, pg. 40

INDEXED ON MAP