

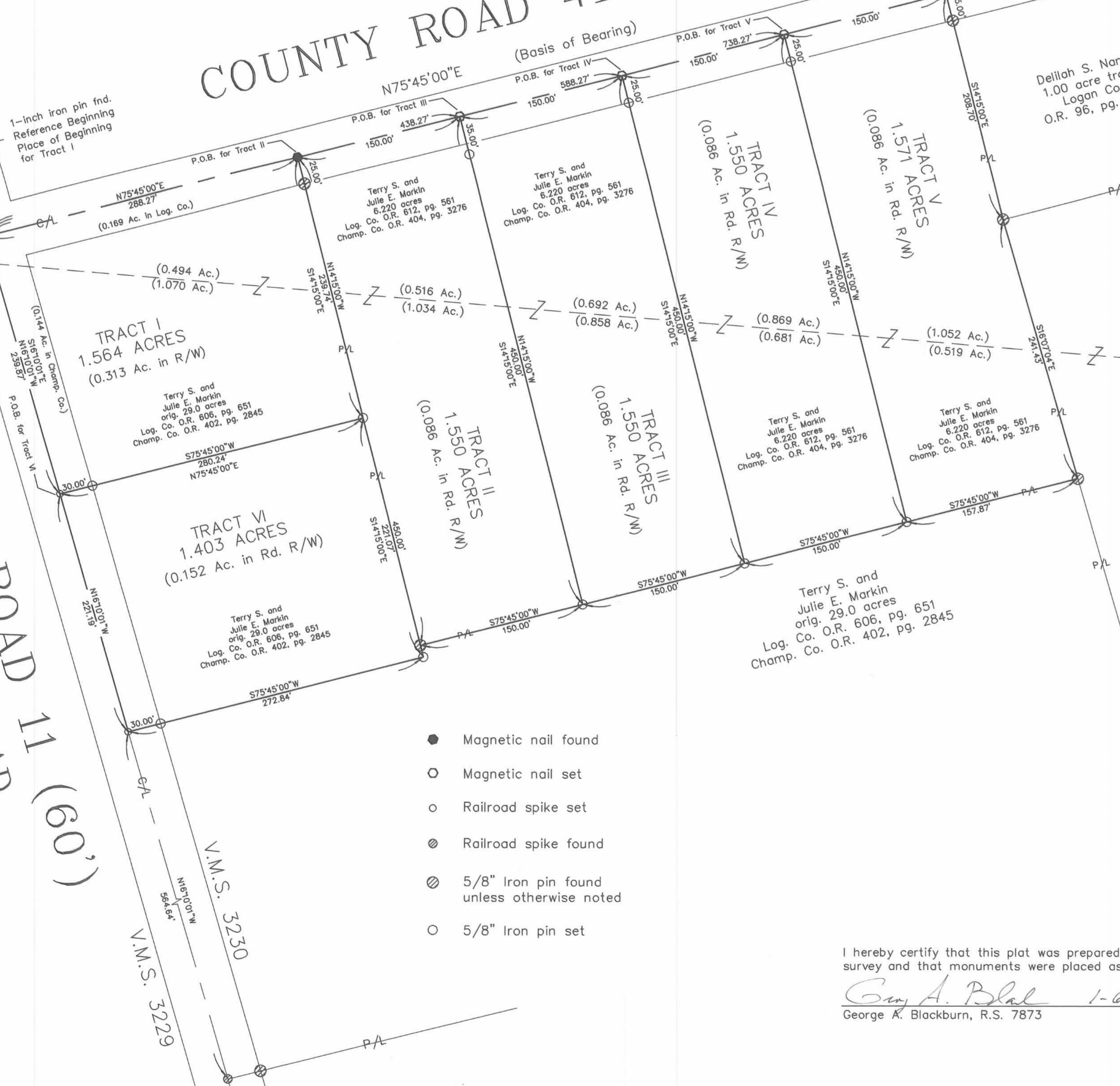
VIRGINIA MILITARY SURVEY 3230
 MONROE TOWNSHIP
 LOGAN COUNTY,
 WAYNE TOWNSHIP
 CHAMPAIGN COUNTY, OHIO

COUNTY ROAD 41 (50')

COUNTY ROAD 28
 V.M.S. 3230
 V.M.S. 3229

COUNTY ROAD 11 (60')
 STEVENSON ROAD

1-inch Iron pin fnd.
 Reference Beginning
 Place of Beginning
 for Tract I

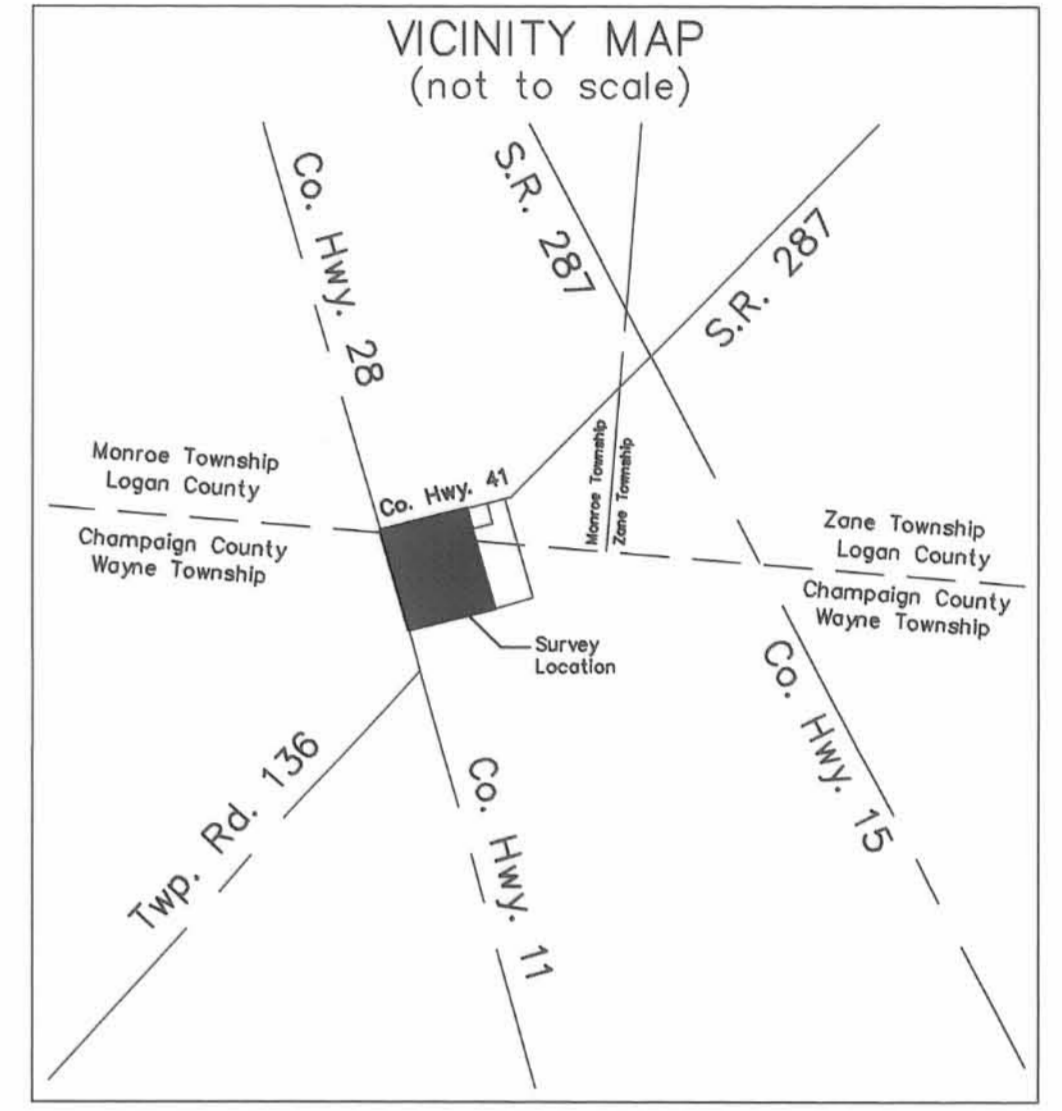


- Magnetic nail found
- Magnetic nail set
- Railroad spike set
- ⊗ Railroad spike found
- ⊗ 5/8" Iron pin found unless otherwise noted
- 5/8" Iron pin set

Dellah S. Nance
 1.00 acre tract
 Logan Co.
 O.R. 96, pg. 734

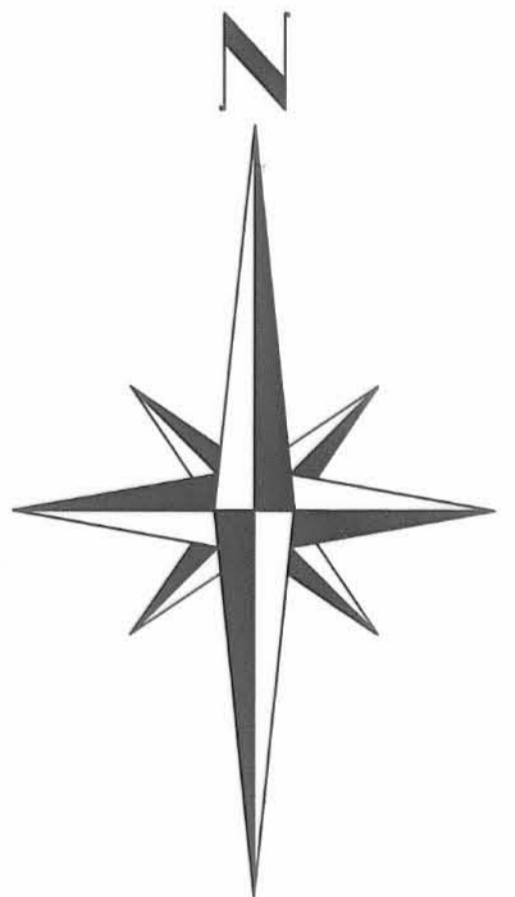
Darren A. and Jennifer L. Eaton
 8.219 acres
 Log. Co. O.R. 607, pg. 972
 Champ. Co. O.R. 403, pg. 2434

Logan County, Monroe Twp.
 Champaign County, Wayne Twp.



MARKIN SURVEY

Being two tracts split out of Terry S. and Julie E. Markin's original 29.0 acre tract described in Logan County Official Record 606, page 651 and in Champaign County Official Record 402, page 2845 and four tracts split out of Terry S. and Julie E. Markin's 6.220 acre tract described in Logan County Official Record 612, page 561 and in Champaign County Official Record 404, page 3276.



I hereby certify that this plat was prepared from an actual field survey and that monuments were placed as indicated hereon.

George A. Blackburn 1-6-03
 George A. Blackburn, R.S. 7873



SCALE IN FEET
 0 60 120

BLACKBURN SURVEYING
 12125 GREEN STREET
 MIDDLEBURG, OHIO 43336
 (937) 666-5605

Filename: Markin Job
 Scale: 1" = 60'
 Date: 1/6/03
 F.B. 8, pg. 19

INDEXED ON MAP
 02/16

S-332