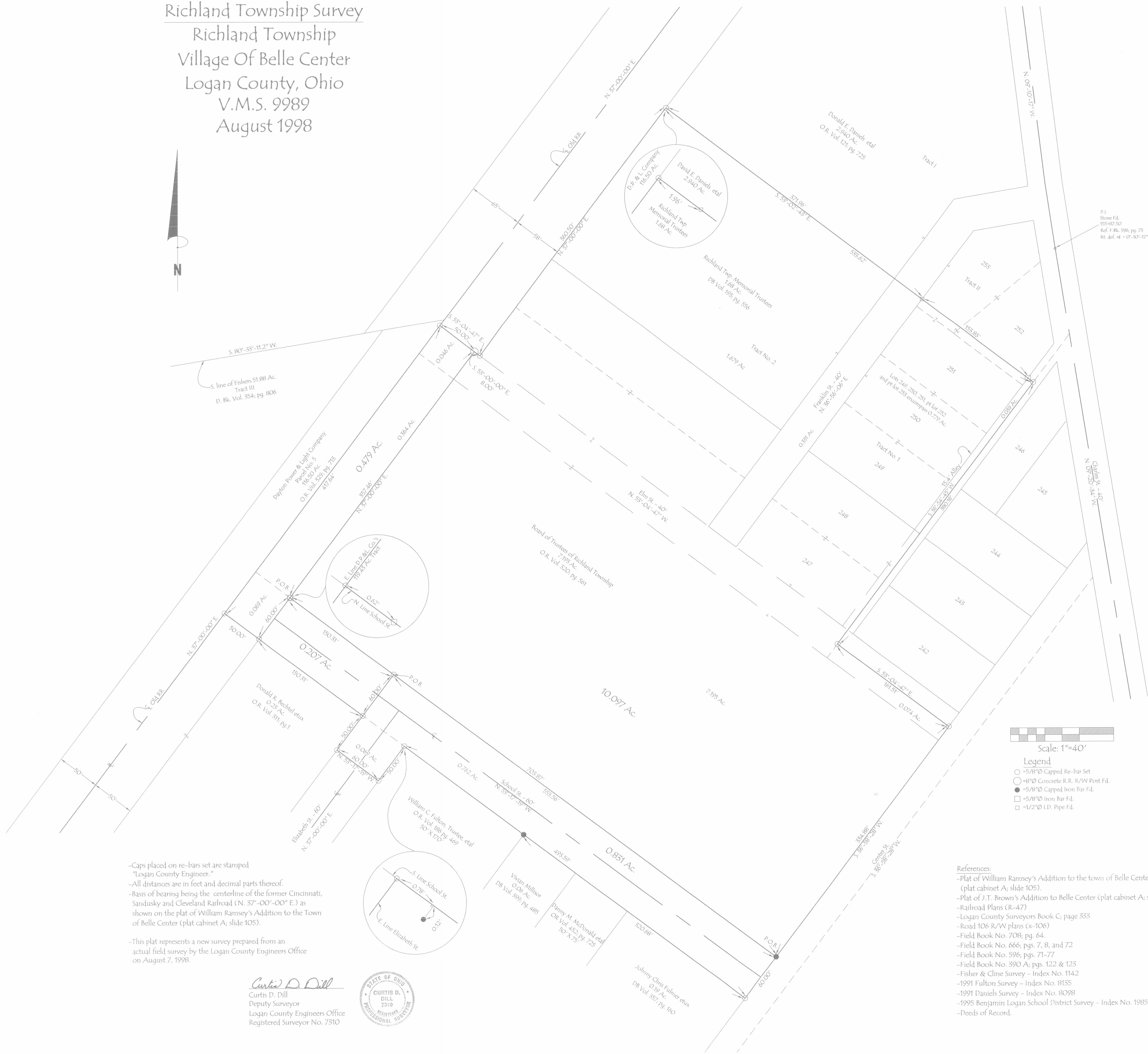


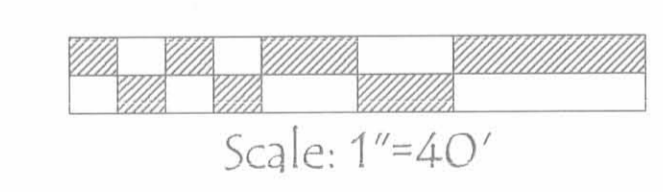
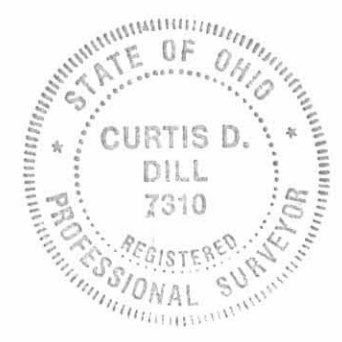
Richland Township Survey  
 Richland Township  
 Village Of Belle Center  
 Logan County, Ohio  
 V.M.S. 9989  
 August 1998



-Caps placed on re-bars set are stamped "Logan County Engineer."  
 -All distances are in feet and decimal parts thereof.  
 -Basis of bearing being the centerline of the former Cincinnati, Sandusky and Cleveland Railroad (N. 37°-00'-00" E.) as shown on the plat of William Ramsey's Addition to the Town of Belle Center (plat cabinet A; slide 105).

-This plat represents a new survey prepared from an actual field survey by the Logan County Engineers Office on August 7, 1998.

*Curtis D. Dill*  
 Curtis D. Dill  
 Deputy Surveyor  
 Logan County Engineers Office  
 Registered Surveyor No. 7310



- Legend
- = 5/8" Capped Re-bar Set
  - = 8" Concrete R.R. R/W Post Fd.
  - = 5/8" Capped Iron Bar Fd.
  - = 5/8" Iron Bar Fd.
  - = 1/2" I.D. Pipe Fd.

- References:
- Plat of William Ramsey's Addition to the town of Belle Center (plat cabinet A; slide 105).
  - Plat of J.T. Brown's Addition to Belle Center (plat cabinet A; slide 65).
  - Railroad Plans (R-47)
  - Logan County Surveyors Book C; page 333
  - Road 106 R/W plans (x-106)
  - Field Book No. 708; pg. 64.
  - Field Book No. 666; pgs. 7, 8, and 72
  - Field Book No. 596; pgs. 71-77
  - Field Book No. 390 A; pgs. 122 & 123
  - Fisher & Cline Survey - Index No. 1142
  - 1991 Fulton Survey - Index No. 8135
  - 1991 Daniels Survey - Index No. 8098
  - 1995 Benjamin Logan School District Survey - Index No. 1985
  - Deeds of Record.