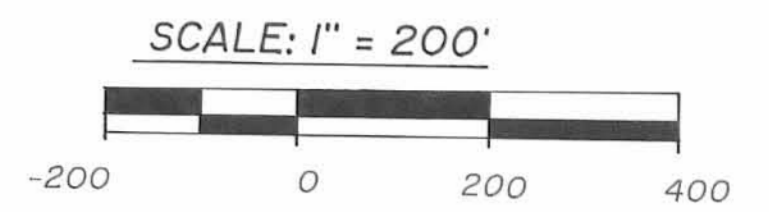


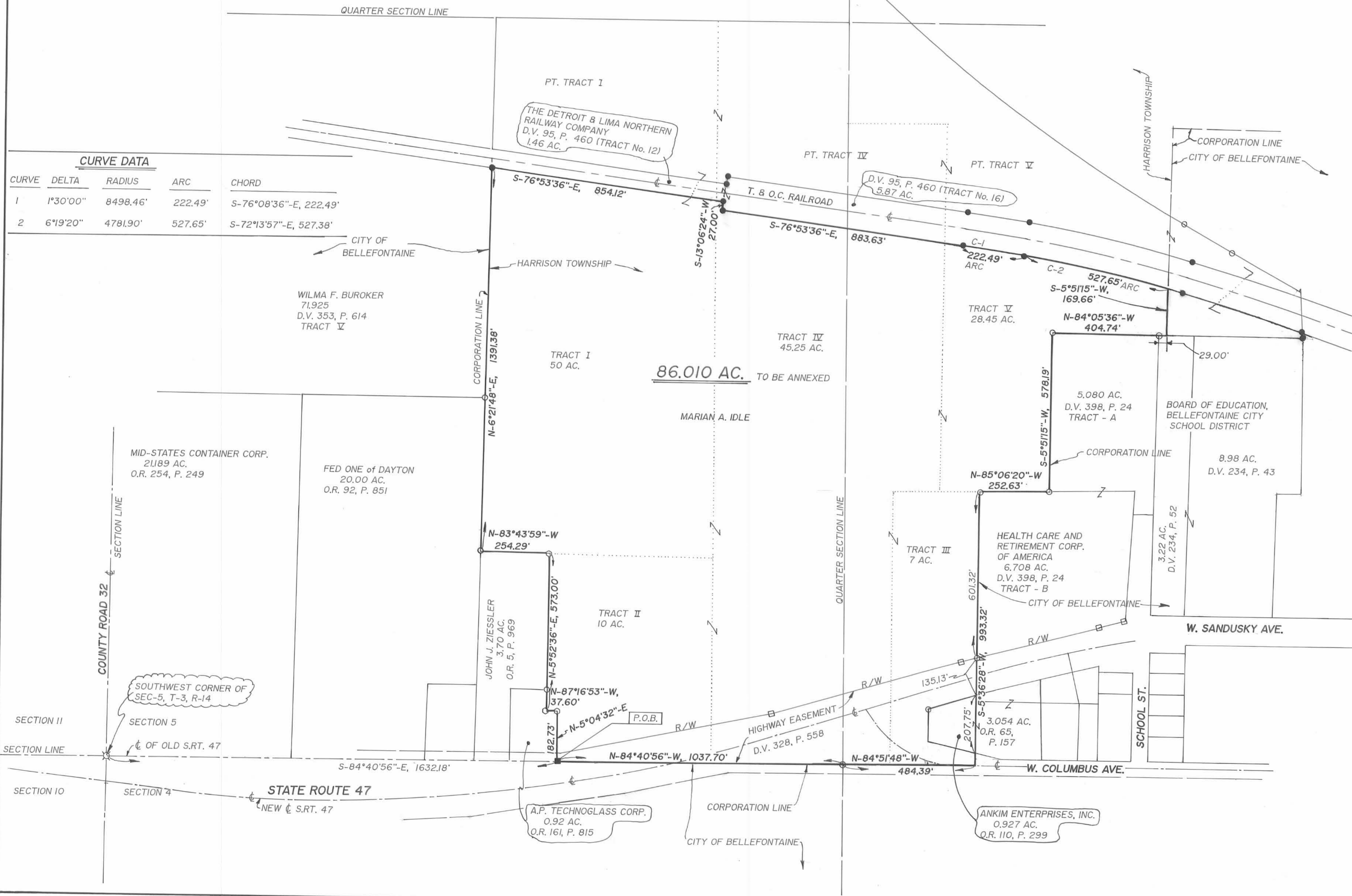
# ANNEXATION PLAT

HARRISON TOWNSHIP, LOGAN COUNTY, OHIO  
SOUTH HALF, SECTION 5, TOWN 3, RANGE 14

PLAT SHOWING AN 86.010 AC. TRACT TO BE ANNEXED INTO THE CITY OF BELLEFONTAINE, SITUATE IN THE SOUTH HALF OF SECTION 5, TOWN 3, RANGE 14, B.T.M.R.S., HARRISON TOWNSHIP, LOGAN COUNTY, OHIO.



DATE: JUNE 14, 1996



**CURVE DATA**

CURVE	DELTA	RADIUS	ARC	CHORD
1	1°30'00"	8498.46'	222.49'	S-76°08'36"-E, 222.49'
2	6°19'20"	4781.90'	527.65'	S-72°13'57"-E, 527.38'

- LOGAN COUNTY COMMISSIONERS, *Russell Jantke* 10-9-97 DATE
- George W. Clayton* 10-9-97 DATE
- John Bayless* 10-9-97 DATE
- LOGAN COUNTY ENGINEER, *Ronald Cas* 10-15-97 DATE
- CHAIRMAN, TOWNSHIP TRUSTER, *Robert S. McAnam* 10-27-97 DATE
- L.U.C. PLANNING DIRECTOR, *Caryn West* 10-15-97 DATE
- MAYOR OF BELLEFONTAINE, *Joe D. Smith* 10-14-97 DATE
- PRESIDENT, CITY COUNCIL, *William P. Patton* 10-14-97 DATE
- CLERK, CITY COUNCIL, *Wicki Yodanis* 10-14-97 DATE
- PLAT PRE-APPROVED, *Jon C. Hines* 10-22-96 DATE
- PLAT CHECKED, *Jon C. Hines* 3-18-98 DATE
- CITY ORDINANCE NUMBER, 97-75, 10-14-97
- TRANSFERRED THIS 20<sup>th</sup> DAY OF MARCH 1998
- LOGAN COUNTY AUDITOR, *Michael E. Godwin*
- RECEIVED FOR RECORD AT 3:43:00 P.M. CLOCK
- THIS 20<sup>th</sup> DAY OF March 1998
- LOGAN COUNTY RECORDER, *Carolyn Collins*
- RECORDED IN PLAT CABINET B, SLIDE 26B & 27A



PREPARED BY: *William D. Edwards*  
WILLIAM D. EDWARDS  
PROFESSIONAL SURVEYOR No. 7574  
110 SOUTH MAIN STREET  
URBANA, OHIO 43078  
(513)653-6508

9802476

EDWARDS SURVEYING  
110 SOUTH MAIN STREET  
URBANA, OHIO 43078  
(513)653-6508

# ANNEXATION PLAT

HARRISON TOWNSHIP, LOGAN COUNTY, OHIO  
SOUTH HALF, SECTION 5, TOWN 3, RANGE 14

### LEGAL DESCRIPTION - AREA TO BE ANNEXED

Being situate in the State of Ohio, County of Logan, Township of Harrison and being a part of the South half of Section 5, Town 3, Range 14, B.T.M.R.S. and being all of a 0.927 acre tract owned by Ankim Enterprises, Inc. as recorded in Official Record 110, Page 299 of the Logan County Records and being a part of Marian A. Idle's original 50 acre, 45.25 acre, 28.45 acre tracts and all of her 10 acre and 7 acre tracts as described in Certificate of Transfer recorded in Official Record 85, Page 21, that is not within existing Corporation of the City of Bellefontaine, that lies between the South line of the abandoned T. & O.C. Railroad and the South line of said Section 5, being more particularly described as follows;

Beginning for reference at a 1" iron bar found in a monument box assembly at the Southwest corner of said Section 5, also being at the intersection of the centerline of County Road 32 and Old State Route 47;

thence with the South line of Section 5 and the centerline of Old State Route 47, S-84°40'56"-E, 1632.18'(feet) to the PRINCIPLE PLACE OF BEGINNING for the tract hereinafter described, also being at the Southeast corner of a 0.92 acre tract owned by A.P. Technoglass Corp. as recorded in Official Record 161, Page 815, also being on the South line of Marian A. Idle's 10 acre tract, of which is a part of the herein described parcel, as recorded in Official Record 85, Page 21, Tract II;

thence with the bounds of said A.P. Technoglass Corp.'s 0.92 acre tract, the following two (2) courses;

1. N-5°04'32"-E, 182.73'(feet);
2. N-87°16'53"-W, 37.60'(feet);

thence continuing with the bounds of said A.P. Technoglass Corp.'s 0.92 acre tract and with an East line of a 3.70 acre tract owned by John J. Ziessler as recorded in Official Record 5, Page 969, N-5°52'36"-E, 573.00'(feet) to the Northeast corner of said Ziessler's tract, also being the Northwest corner of aforementioned Idle's 10 acre tract, passing for reference the Northeast corner of aforementioned A.P. Technoglass Corp.'s 0.92 acre tract at 75.14'(feet);

thence with the North line of said Ziessler's 3.70 acre tract, also being the South line of the original 50 acre tract owned by Marian Idle as recorded in Official Record 85, Page 21, Tract I, of which the herein described parcel is partially a part of, N-83°43'59"-W, 254.29'(feet) to the Southwest corner of said Idle's original 50 acre tract, also being on the East line of a 20.00 acre tract owned by Fed One of Dayton as recorded in Official Record 92, Page 851;

thence with the East line of said Fed One of Dayton's 20.00 acre tract and with the East line of a 71.925 acre tract owned by Wilma F. Buraker as recorded in Deed Volume 353, Page 614, Tract V, and with the West line of aforementioned Idle's original 50 acre tract, N-6°21'48"-E, 1391.38'(feet) to a point on the South line of a 1.46 acre tract owned by The Detroit and Lima Northern Railway Company as recorded in Deed Volume 95, Page 460, Tract XII, also known as the abandoned T. & O.C. Railroad, passing for reference the Northeast corner of Fed One of Dayton's 20.00 acre tract at 556.54'(feet);

thence with the South line of said 1.46 acre tract, S-76°53'36"-E, 854.12'(feet) to the Southeast corner of the aforementioned Railroad's 1.46 acre tract, also being on the West line of a 5.87 acre tract, also owned by The Detroit and Lima Northern Railway Company as recorded in Deed Volume 95, Page 460, Tract XVI, also known as the abandoned T. & O.C. Railroad;

thence with the bounds of said Railroad's 5.87 acre tract, the following four (4) courses;

1. S-13°06'24"-W, 27.00'(feet) to the Southwest corner of said 5.87 acre tract;
2. S-76°53'36"-E, 883.63'(feet) to a point;
3. with a curve to the right, having a radius of 8498.46'(feet), an arc distance of 222.49'(feet) to a point, the chord of which bears, S-76°08'36"-E, 222.49'(feet);
4. with a curve to the right having a radius of 4781.90'(feet), an arc distance of 527.65'(feet) to a point on the existing Corporation Line of the City of Bellefontaine, the chord of which bears S-72°13'57"-E, 527.38'(feet);

thence with the Corporation Line of the City of Bellefontaine, S-5°51'15"-W, 169.66'(feet) to a point on the North line of a 3.22 acre tract owned by the Board of Education, Bellefontaine City School District, as recorded in Deed Volume 234, Page 52;

thence with the North line of said 3.22 acre tract and with the North line of a 5.080 acre tract owned by Health Care and Retirement Corp. of America as recorded in Deed Volume 398, Page 24, Tract A, N-84°05'36"-W, 404.74'(feet) to the Northwest corner of said 5.080 acre tract, passing for reference the Northwest corner of the Board of Education, Bellefontaine City School District, 3.22 acre tract at 29.00'(feet);

thence with the West line of said Health Care and Retirement Corp. of America's 5.080 acre tract, S-5°51'15"-W, 578.19'(feet) to a point on the North line of a 6.708 acre tract also owned by Health Care and Retirement Corp. of America as recorded in Deed Volume 398, Page 24, Tract B;

thence N-85°06'20"-W, 252.63'(feet) to the Northwest corner of said 6.708 acre tract, also being the Northeast corner of Marian A. Idle's 7 acre tract of which is a part of the herein described parcel, as recorded in Official Record 85, Page 21, Tract III;

thence with the East line of said Idle's 7 acre tract, also being the West line of said 6.708 acre tract and the West line of Ankim Enterprises, Inc.'s 3.054 acre tract as described in Official Record Volume 65, Page 157, S-5°36'28"-W, 993.32'(feet) to a point on the aforementioned South line of Section 5, also being on the centerline of W. Columbus Avenue, passing for reference the North right-of-way line of existing State Route 47 (W. Sandusky Avenue) at 601.32'(feet), and also passing for reference the Northeast corner of aforementioned Ankim Enterprises, Inc.'s 0.927 acre tract, of which is a part of the herein described parcel, at 736.45'(feet);

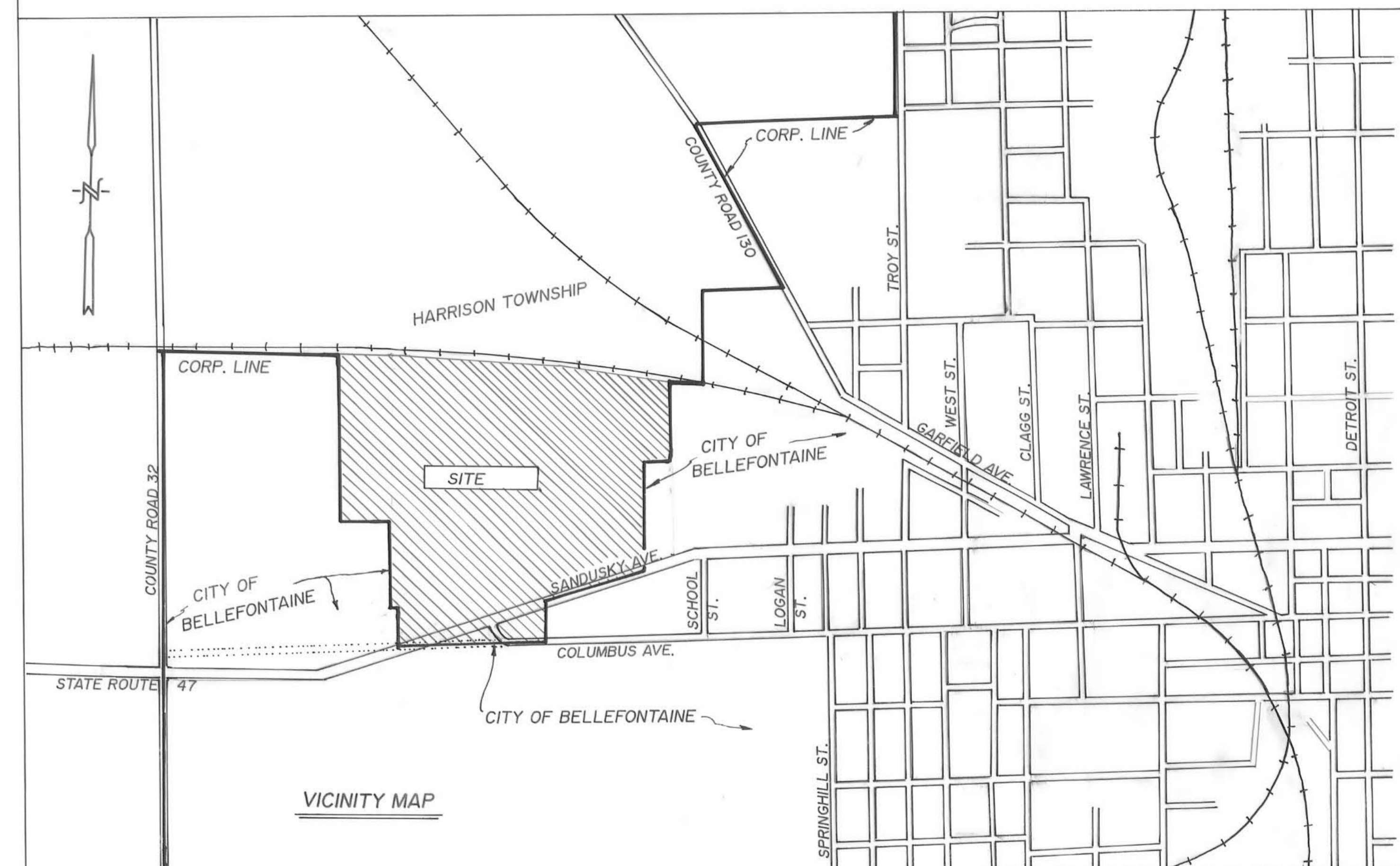
thence with the South line of Section 5, also being the centerline of Old State Route 47, the following two (2) courses;

1. N-84°51'48"-W, 484.39'(feet) to the Quarter Section corner;
2. N-84°40'56"-W, 1037.70'(feet) to the place of beginning.

Containing 86.010 acre, but being subject to the rights of all legal highways and all easements of record, including but not limited to, an easement to the State of Ohio for highway purposes as recorded in Deed Volume 328, Page 558 of the Logan County Records.

Being all of Ankim Enterprises, Inc.'s 0.927 acre tract as recorded in Official Record 110, Page 299 of the Logan County Records, approximately 26.01 acres of Marian Idle's original 50 acre tract (Official Record 85, Page 21, Tract I), all of Marian Idle's 10 acre tract (Official Record 85, Page 21, Tract II), all of Marian Idle's 7 acre tract (Official Record 85, Page 21, Tract III), approximately 33.0 acres of Marian Idle's original 45.25 acre tract (Official Record 85, Page 21, Tract IV), and approximately 10.0 acres of Marian Idle's original 28.45 acre tract (Official Record 85, Page 21, Tract V). (Said Ankim Enterprises 0.927 ac. tract is out of Idles 7 ac. tract (Tract III))

The foregoing description prepared by and in accordance with a field Survey by William D. Edwards, Professional Surveyor No. 7574, June 14, 1996. The basis of bearings for the herein described 86.010 acre tract is the South line of Section 5, also being the centerline of Old State Route 47, per an assumed bearing of S-84°40'56"-E, all other bearings are per distances measured and angles observed in the field.



VICINITY MAP

PLAT PRE-APPROVED Jon C. Hines DATE: October 22, 1996

PLAT CHECKED Jon C. Hines DATE: MARCH 18, 1998

DESCRIPTION CHECKED \_\_\_\_\_ DATE: \_\_\_\_\_

RECEIVED FOR RECORD AT 3:43:00 O'CLOCK P. M. THIS 20th

DAY OF March, 19 98.

LOGAN COUNTY RECORDER Carolyn Collins

RECORDED IN PLAT CABINET B SLIDE 26B & 27A