

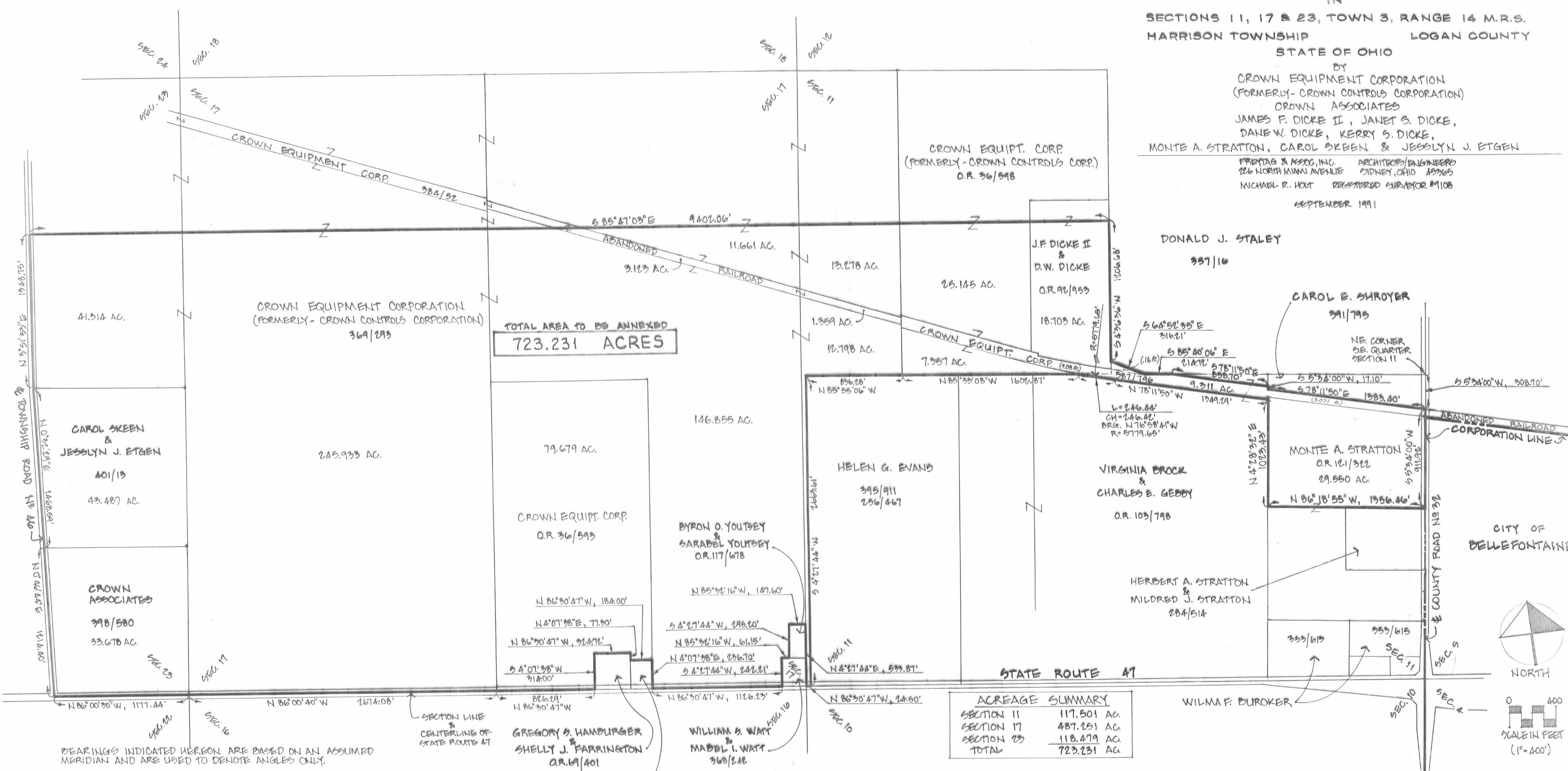
ANNEXATION OF 723.231 ACRES TO THE CITY OF BELLEFONTAINE

SECTIONS 11, 17 & 23, TOWN 3, RANGE 14 M.R.S. HARRISON TOWNSHIP LOGAN COUNTY STATE OF OHIO

BY CROWN EQUIPMENT CORPORATION (FORMERLY - CROWN CONTROLS CORPORATION) CROWN ASSOCIATES JAMES F. DICKE II, JANET S. DICKE, DAN W. DICKE, KERRY S. DICKE, MONTE A. STRATTON, CAROL SKEEN & JESSLYN J. ETGEN

FREITAG & ASSOC., INC. ARCHITECTS/ENGINEERS 226 NORTH MIAMI AVENUE SIDNEY, OHIO 45765 MICHAEL R. HOLT REGISTERED SURVEYOR #1108

SEPTEMBER 1991



TOTAL AREA TO BE ANNEXED 723.231 ACRES

ACREAGE SUMMARY table with columns for Section and Acreage. Rows include Section 11 (117.501 AC), Section 17 (487.251 AC), Section 23 (118.479 AC), and TOTAL (723.231 AC).

CITY OFFICERS: Planning Commission President, Mayor, President of Council, Clerk of Council, Ordinance No., City Engineer. COUNTY OFFICERS: Logan County Engineer, Logan Union, Champaign Regional Planning Commission, Logan County Commissioners. TOWNSHIP TRUSTEES. PLAT PREAPPROVAL, PLAT APPROVAL. SHEET 1 OF 2.

BEARINGS INDICATED HEREON ARE BASED ON AN ASSUMED MERIDIAN AND ARE USED TO DENOTE ANGLES ONLY.

THIS DRAWING REPRESENTS A COMPILATION OF RECORDED SURVEYS AND LEGAL DESCRIPTIONS AND IS NOT A BOUNDARY SURVEY PURSUANT TO CHAPTER 4733-37 OF THE OHIO ADMINISTRATIVE CODE. I HEREBY STATE THAT THIS PLAT OF A 723.231 ACRES ANNEXATION WAS PREPARED BY ME FROM AVAILABLE RECORDS.

Michael R. Holt, Registered Surveyor #7108, September 5, 1991.

