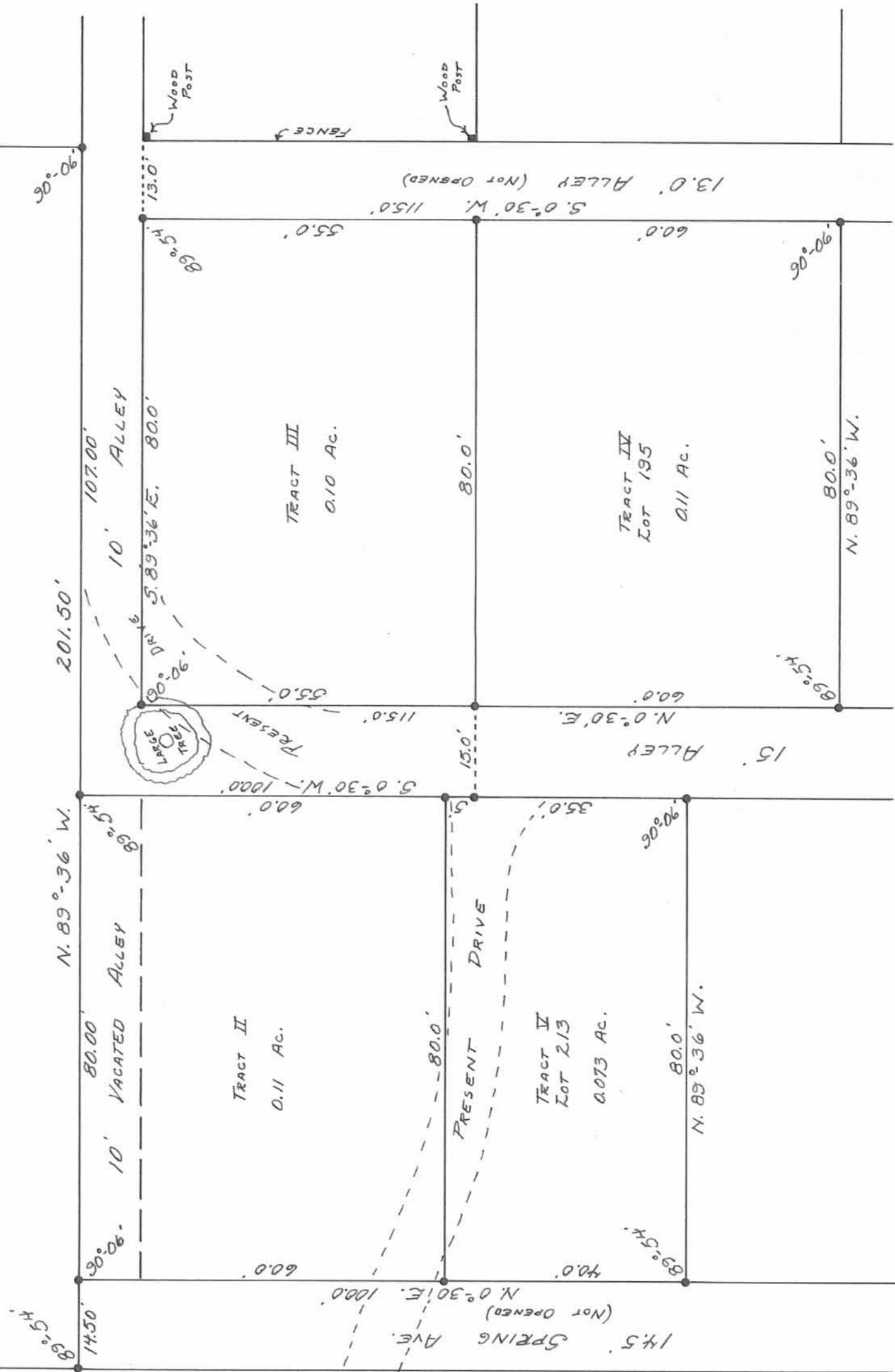


S. R. No. 366

STATE LINE (CALC.)



TRACT I
0.736 Ac.



CARLSON SURVEY
 SEC. 35 T. 6 S. R. 8 E.
 RUSSELLS POINT COOPERATION
 WASHINGTON TOWNSHIP
 LOGAN COUNTY, OHIO
 MAY 3, 1969

• - 5/8" ϕ IRON BARS SET.

SCALE: 1" = 20'

SURVEYED AND PLATTED BY:
 DANIEL E. GILBERT, F.S.
 REG. SUR. NO. 5402
 428 N. MADRIVER ST.
 BELLEFONTAINE, OHIO 43311