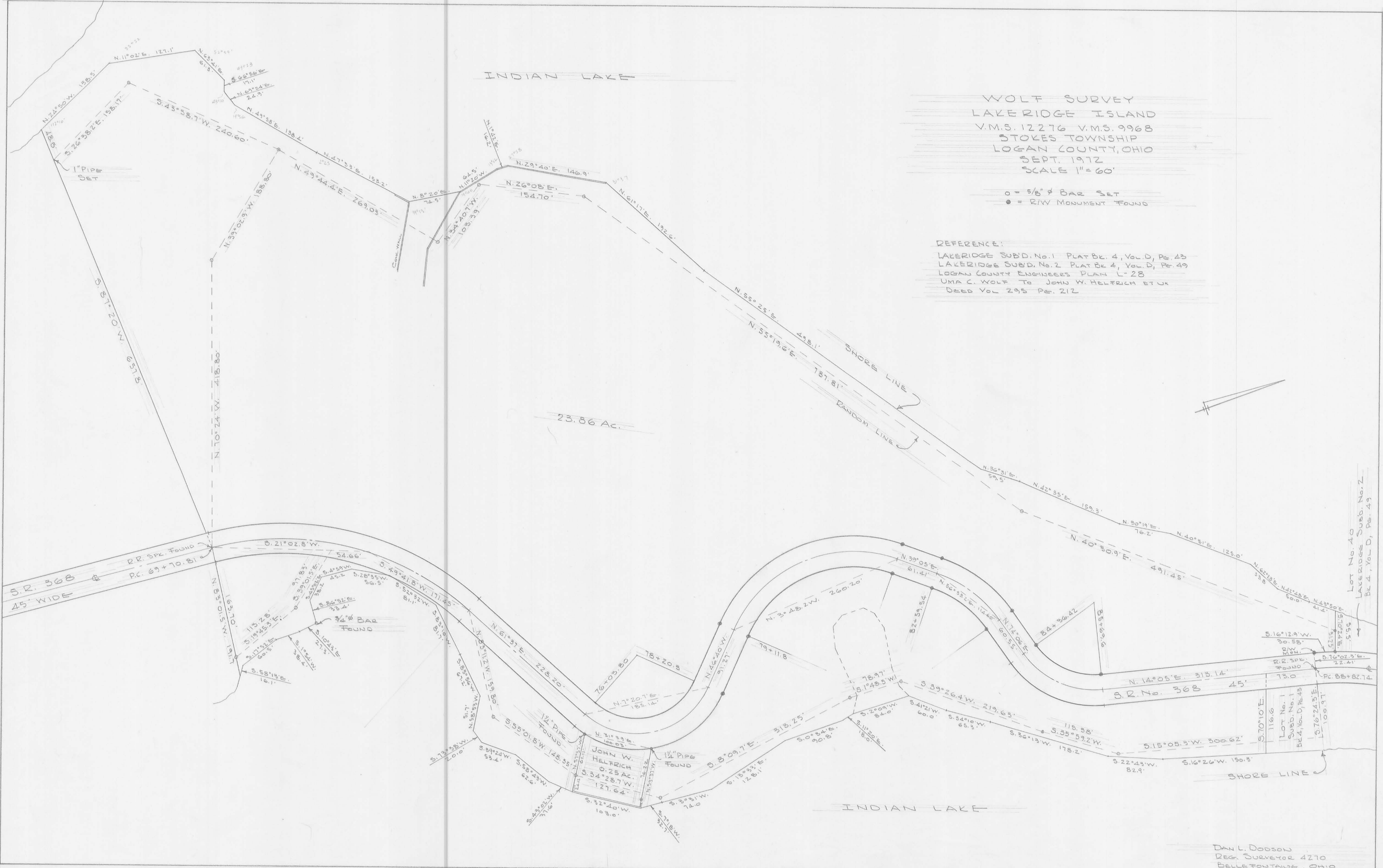


INDIAN LAKE

WOLF SURVEY  
LAKE RIDGE ISLAND  
V.M.S. 12276 V.M.S. 9968  
STOKES TOWNSHIP  
LOGAN COUNTY, OHIO  
SEPT. 1912  
SCALE 1" = 60'

○ = 5/8" ♂ BAR SET  
● = R/W MONUMENT FOUND

REFERENCE:  
LAKE RIDGE SUBD. No. 1 PLAT BK. 4, VOL. D, PG. 43  
LAKE RIDGE SUBD. No. 2 PLAT BK. 4, VOL. D, PG. 49  
LOGAN COUNTY ENGINEERS PLAN L-28  
UMA C. WOLF TO JOHN W. HELFRICH ET UX  
DEED VOL. 295 PG. 212



Lot No. 40  
LAKE RIDGE SUBD. No. 2  
Bl. 4, Vol. D, PG. 49

DAN L. DOOSON  
REG. SURVEYOR 4270  
BELLEFONTAINE, OHIO